

MAGIUS

Multiple Assignable Game Interface for Universal System
【富士見汎用システム】

NEON GENESIS EVANGELION RPG II
ANGEL APPROACHES!

Translated by Trotti



Fujimi Bunko



Fujimi Dragon book

Neon Genesis Evangelion RPG II
Angel Approaches!

Orange Jelly / Deep Sea Workshop

Fujimi Library

NEON GENESIS EVANGELION

Angel Approaches!



Present, Past, Future.....
All converge in one point in time.

Invitation to EVA RPGII
EVANGELION RPGII GAME START

1 The Beginning

INTRODUCTION ↓ P 25

A new incident occurs



Identification pattern BLUE

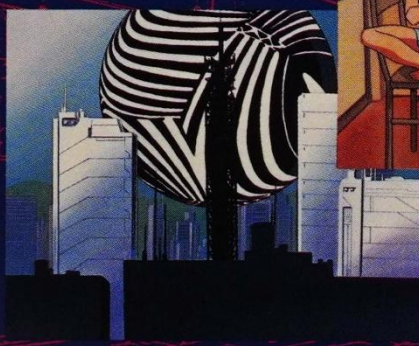


It begins when Rei comes to stay...

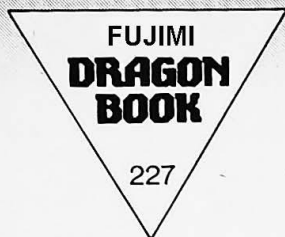
2 EVENT

EVENT →P45

Daily training



Broken
peace...



Neon Genesis EVANGELION RPG II

Angel Approaches!

Orange Jelly / Deep Sea Workshop

13-21

Fujimi Library

Text illustration
Hiroki Haritama
English Translation by Trotti
September 20, 2020

Introduction to the English Translation

This book is the second of three volumes published by Fujimi Shobo for the MAGIUS universal role playing system set in the world of Neon Genesis Evangelion.

MAGIUS is an acronym for Multiple Assignable Game Interface for Universal System. It uses a unified set of rules that cover a variety of game types. It is simple, easy to learn and has supplements for many popular anime and manga series.

The first volume, “Decisive Battle! Tokyo 3” is a combat strategy game. This second volume, “Angel Approaches!” is a self-contained adventure focusing more on role playing. The third volume, “Angel, Defeated!” is a replay collection of the other two books, as well as supplemental rules for combining them. This volume, “Angel Approaches” is both an extended Solo Player adventure and the rules for playing multiplayer games. The Solo Adventure is a good, fun read. The multiplayer game is not well designed. MAGIUS is not a good game engine and the lack of development in this supplement underscores this. Play the Solo Adventure in volume Two, then grab Volume One “Decisive Battle! Tokyo 3” and kick some Angel butt in your EVA.

I hope you enjoy this peek into an artifact from another time and place: the TTRPG gaming scene in Japan, circa 1997.

Trotti, September 2020

Table of contents

Chapter 1 Introduction	12
1. Contents of this book	13
2. Explanation of Evangelion	16
Chapter 2 Playing the Game	24
1. Solo Play Prologue	25
2. Contents of solo play	32
3. How to play	34
Game data	37
Transition to multiplayer	38
End of the game	39
Chapter 3 Solo Play Events	40
Event 1 "The Fourth Roommate"	41
Event 2 "Things that move at night"	54
Event 3 "Where's Dinner?"	65
Event 4 "The beginning of the party"	74
Event 5 "Everybody keep Calm"	81
Event 6 "Regular Test"	89
Event 7 "After-school test"	97
Event 8 "The Incident"	109
Event 9 "Today I glimpsed a piece of it"	119
Event 10 "Growing Impulses"	128
Last Event "The Final Voice"	137
Chapter 4 Solo Play Endings	148
Chapter 5 Playing with a Group	181
1. Contents of Multiplayer	182
The role of GM and players	182
What to prepare	183

When using the character used in solo play	184
Experience solo play with a group	186
2. Character introduction	188
3. Skill Explanations	190
Skills and Weaknesses	190
4. How to play	194
How to use Playing Cards	195
Playing card meanings and numbers	195
Number of playing cards	196
Choose Eva Options	197
Weapon list	198
Relationship between attributes and skills	201
If you run out of cards	203
How to use MP and ♥	204
Event card effect	206
Character acting	208
Card, bonus	210
NERV Headquarters HP	212
When HP becomes 0	213
End of combat and card replenishment	214
End of the game	214
GM part	216
How to Make an Angel	216
Angel Examples	219
Play Guidelines	225
Reference	228

Neon Genesis Evangelion RPG II
Angel Approaches!

Chapter 1 Introduction

Contents of this book

This game is the second MAGIUS supplement for *Neon Genesis Evangelion*. The first book focused on combat between the EVAs and the Angels, but this book, "Angel Approaches!" is a story about an Angel who enters Shinji's life.

The story summary in these rules is written for people who are already familiar to some extent with the Evangelion TV series, so if you haven't seen it, please watch the anime or read the manga. Still, even if you know just the basics, like the characters' names and appearance, you should be able to manage.

Videos of the TV anime are available from King Records, and the manga and film comics are available from Kadokawa Shoten.

Game content

The setting of the game is the city of Tokyo 3. This is an original story that occurs between episodes 16 and 17. In solo play you will play by yourself. You will experience the life of an Angel invading Tokyo 3 as well as the lives of the three Eva pilots.

In multiplayer, you will play with a group of players to battle the Angel based on the results of solo play.

Since the play method is different between solo play and multiplayer, please read the rules carefully for each.

Asuka: This is the second *MAGIUS Neon Genesis Evangelion RPG* game book. That said, this adventure has nothing to do with the first work, so you don't have to worry about it at all. And this game will be explained by us, the glorious EVA pilots! Well, at least I am. The other two are just a bonus.

Shinji: What's that? Asuka, you can't say it like that!

Asuka: How else is there to say it? An indecisive boy and a reticent girl. That's some combination to explain the game! If me saying that makes you mad, introduce yourself like you've got some guts and prove me wrong!

Shinji: Uh...uh, uh. Nice to meet you, I'm Shinji Ikari, the commentator.

Asuka:

Shinji:

Asuka: What the hell was that?

Shinji: My introduction.

Asuka: Wow. That was your introduction? You are so boring. That's why you're just a bonus!

Shinji: You said that's what I should do.....

Asuka: I meant do it good. Quick. To the point.

Rei: He did what you requested.

Asuka: That's not the point! It's a good thing for both of you that I was asked to put together this explanation. I didn't want to have to say it, but Misato told me I had to take care of you two. That's why I'll be in trouble if you don't do it right. So there.

Shinji: Misato is always asking for this kind of thing.



Rei:

Asuka: Get it? I'm the leader!

Shinji: I understand.

Asuka: So, no complaints, First.

Rei: I have none.

Asuka: OK. Let's do this!

Shinji: Well, it's true. Asuka might be the best in this kind of situation.

Explanation of Evangelion

Synopsis of Neon Genesis Evangelion

A sudden massive explosion occurred in Antarctica. As a result, mankind was hit by all kinds of disasters, such as tsunamis, earthquakes, extreme weather, civil war and economic depression. Many cities were completely destroyed and most of humanity died over the next few years.

This was the greatest disaster in human history. It was called the Second Impact.

That was 15 years ago.

The barely surviving humans adapted to the harsh environment and began to rebuild civilization.

Chapter 1 - Introduction

However, a threat to that recovery has suddenly occurred. This threat is the mysterious appearance of creatures called Angels.

The story begins with the arrival of an Angel in the City of Tokyo 3 on the same day that Shinji Ikari, a 14 year old boy, is called there by his estranged father. His father, Gendou, spoke to him for the first time in years, and told him coldly, "Take the Evangelion robot and fight the Angels...."

What this father needed was not a son, but a pilot who could operate an EVA. Realizing this, Shinji tried to reject piloting the EVA. However, when he learned that if he didn't, a seriously injured girl would take his place, Shinji decided to fight.

He won the battle. However, a deep wound was left in the boy's heart. Shinji keeps his heart closed so that no one can hurt him.

However, during his time in the United Nations Special Organization, NERV, he gradually got to know other people.

Misato Katsuragi, with whom he lives, Rei Ayanami, pilot of Eva Unit 00, Asuka Langley Souryu, pilot of Unit 02, and his close friends Touji Suzuhara and Kensuke Aida.

And there was his father's presence throughout NERV. The boy grows up to be an adult during a fierce battle with the Angels....

Asuka:What kind of explanation was that!? It barely even mentioned my name!

Shinji: I guess it couldn't be helped. Asuka hasn't been around that long by episode 16.

Asuka: Still, it doesn't have to be all about Shinji! Why doesn't it start with The First? She was here from the beginning!

Shinji: I don't know...

Asuka: Look First Child, you have to complain too! Isn't it disappointing that Shinji is treated so favorably?

Rei: Not really.

Asuka:! It's totally unfair! He wasn't even here before you!

Shinji: Well, Asuka. Anybody who buys this book probably knows the story without us explaining it.

Asuka: Uh huh. That's not a very good business model. "If you buy this book, go check out the story yourself." Do you want to say that?

Shinji: Nobody's saying that!

Asuka: What else could you mean?'

Shinji: That's not...

Rei: This is not supposed to be a complaint column.

Asuka: Ha ha.

Shinji: She has a point. Even though we are commentators, Asuka, you shouldn't complain.

Asuka: Shut up! This book is within the scope of the LD and video, so we don't have to bother explaining the story!

Shinji: That's what I just said.

Asuka: Shut up, idiot! Anyway, that's what it is!

Rei:

Asuka: Do you have a complaint, honor student?

Rei: I didn't say anything.

Character introduction

Shinji Ikari

Description: The Third Child reported by the Marduk Agency. He is also the only son of Gendou Ikari, commander of the UN special agency NERV. Shinji hates his father who is only interested in his work, yet at the same time Shinji seeks his love. Because of the complicated family environment, he is sick of being hurt and unable to connect with others. However, as the story progresses, his character gradually becomes cheerier by living with Misato Katsuragi and Asuka, and interacting with his school friends Touji Suzuhara and Kensuke Aida. He is the exclusive pilot of EVA Unit 01.

Rei Ayanami

Description: The First Child identified by the Marduk Agency. She is the exclusive pilot of the EVA Unit Zero. Characteristically calm and reserved. She appears wooden and aloof to others. Later it is revealed that her body originated from the Angels. There are several physical Rei Ayanami clones, but Rei Ayanami's "soul" is always the same.

Asuka Langley Souryu

Description: The Second Child identified by the Marduk Agency. Exclusive pilot of Eva Unit 02 from Germany. She has a sharp mind and was eligible for university graduation at the age of 14, but she is self-centered and vain. She has an unrequited love for Ryoji Kaji who came from the German branch of NERV with her.

Misato Katsuragi

Description: She works for the United Nations special agency NERV. Her rank is Major, and she is the chief of the first section of the Tactical Operations Department. She became Shinji's guardian after he was supposed to live alone in Tokyo 3, and he lives in her apartment. Her work is outstanding, but her housework and cooking ability leave a lot to be desired. She loves beer.

Ritsuko Akagi

Description: Head of NERV's Technology Development Department, Technical Section 1. She is a talented woman with a PhD. He is also an old friend of Misato Katsuragi at NERV Headquarters. She supports the technical side of Evangelion, but has a bad habit of judging things only through reason and science.

Gendou Ikari

Description: Commander of the United Nations Special Agency NERV. He created the Evangelions to repel the Angels. He is also in charge of the top-secret Human Instrumentality Project. He does whatever ruthless things necessary to get the job done, but sometimes he shows his human feelings. He is Shinji's father.

Kouzou Fuyutsuki

Description: NERV Deputy Commander. Enduring the spiritual pressure under Gendou Ikari, he is like Gendou's work-wife, taking over NERV's chores. He was also Gendou's teacher at the university. His hobby is playing Shogi.

Ryoji Kaji

Description: A member of NERV's intelligence department. He was once Misato Katsuragi's lover. Now he seems to be simply an old friend of Ritsuko and Misato, but in fact, he is also a spy who came to search for the secret of NERV.

Maya Ibuki

Description: Operator who belongs to the Science department of NERV. She is a subordinate of Dr. Ritsuko Akagi and has a rank of second lieutenant. She likes things organized and hates untidiness.

Makoto Hyuuga

Description: Operator who belongs to NERV Operations 1st Division. He has Misato Katsuragi as his direct boss. He never tires of being asked to do chores for her during working hours. His rank is Lieutenant.

Shigeru Aoba

Description: Operator in charge of communication and information analysis in the NERV Operations Control Room. His rank is Lieutenant. He likes to play the guitar.

Touji Suzuhara

Description: Shinji's friend. A hot-blooded young man who dislikes being disrespected. He loves wearing a track suit for some reason. He uses the Kansai dialect and is from Kansai. He later became the Fourth Child.

Kensuke Aida

Description: Shinji's friend. A bright personality with military and video mania. He has a hobby of going to camp and doing military training often alone.

Hikari Horaki

Description: She is the Class Rep for Classroom 2A at the Middle School Shinji attends in Tokyo 3. She is an enthusiastic worker. However, because of her serious and abrasive personality, she is avoided by guys. She is Asuka's friend, and has a crush on Touji.

Pen Pen

Description: Misato Katsuragi's roommate. A new type of hot spring penguin. He is a bird that lives a civilized life in Misato's refrigerator. Above all, he loves hot springs. Later he is evacuated and goes to live with the Horaki family.

Asuka: The above are the main characters in Evangelion. That said, to play what's in this book, you only need to know the first five. After that well... As I recall, the others have no particular effect. Oh, but remember Kaji and Hikari because they have a close relationship with me. Nobody else really matters.

Rei: The first five people...

Shinji: My Dad isn't among them.

Asuka: That's because Commander Ikari isn't very popular in this game. But Ibuki will still come into play.

Rei: ...Okay.

Asuka: What is that look? Did I say anything wrong?

Rei: Nothing.

Asuka: Stop looking at me like that.

Shinji: I only see her usual facial expression on Ayanami.

Asuka: Even so, her eyes are judging me. Definitely!

Rei: I am not judging you.

Shinji: Ayanami looks like this all the time. Let's go to the next explanation.

Rei: That would be advisable.

Asuka: Oh, I won't be fooled! That girl is definitely out to get me!

Chapter 2 Playing the Game: Solo Play

1. Solo Play Prologue

"Identification pattern...blue?"

Maya was surprised.

This wasn't supposed to happen during a routine synchro test. The display showed the three children who were the EVA pilots safely in their test entry plugs.

There were no problems with the progress of the test. In fact, the results were rather good so far.

Asuka's numbers had remained high, and Shinji was outpacing her. And although Rei's numbers were low compared to the other two, it was not a problem that needed to be addressed at the moment.

Compared to usual, in fact, this experiment was one of the more relaxed.

But with the alert flashing on her display, Maya knew the experiment had just turned into a tense situation.

"Identification pattern: Blue" it read. The message had just appeared on the display a few seconds before without any notice or warning.

They were words that should not have appeared in such a simple experiment.

"Sensei!" Maya exclaimed, and when Ritsuko turned around, she saw the words too. They were not an illusion.

"Cancel the test, hurry up and pull them out!" Ritsuko said.

"But....." Maya started to reply.

"Quickly!" Ritsuko's decision was quick. The Technicians looked at her with surprise for a moment, but then hurried to obey the command. "Abort the test!"

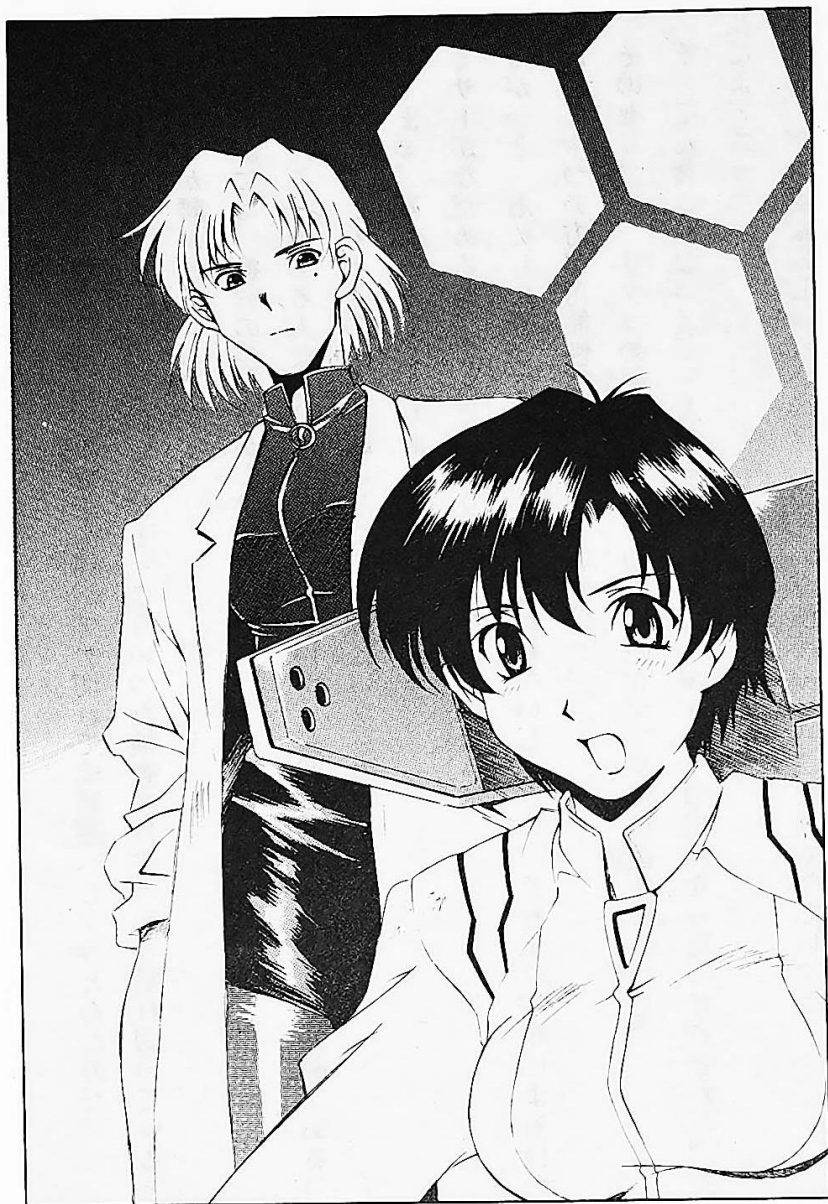
"Check pulse disconnection and signal reception!"

"Recover the pilots!"

Ritsuko stood in the middle of the noisy technicians. In her head various possibilities were simulated.

"Sensei, maybe it's an error. Should we have the MAGI check again?"

"The chances of it being real are almost zero, but it's possible that Shinji and the others have been compromised. Have the MAGI run another check!"



The MAGI were a trio of supercomputers that could be said to be the center of not only NERV but all of the city of Tokyo 3. The path that the Angel invaded was new to their memory.

It had only been a week since Shinji and his EVA had been dragged into the imaginary space of the Duroc sea.

"There's the possibility of it being a mere display error..." Maya said, though her voice didn't sound convinced.

"Of course, that should be investigated as well. I'll make a note of it in my report. But we'll have to do a thorough inspection of the MAGI system and the EVA pilots to be sure."

"Understood..."

"Aaagh! Again? We've been doing this all day!" Asuka's voice was sharp and cross.

Inspection.

Inspection.

Inspection.

Inspection.

Inspection.

In the flood of inspections that followed rapid fire one after another, Asuka's patience and endurance was quickly wearing thin. She was on the verge of going ballistic.

Nearby, Shinji had given up complaining, and Rei was sitting calmly, completely used to such tests.

But still, fatigue was showing on the faces of all three. As anyone who has ever experienced a long physical examination may know, it is hard work.

Asuka let out a disgusted huff of indignation as Misato entered the room.

"Take it easy. Sometimes these things happen," Misato said, trying to soothe her. But Asuka's anger wasn't ready to subside.

"Why do I have to do it? There's nothing wrong with me. Isn't he more likely to be the cause?"

Shinji noticed Ritsuko's eyebrows raise as he moved to the front of the line.

"Excuse me, Asuka, but that's not true. Ritsuko said any one of you could have been the cause of the alert."

"Are you saying one of us isn't one of us?" Asuka replied indignantly, then turned to Shinji. "You were taken inside that Angel last week, weren't you?"

"That's true, but..." he began.

"But what? You always try to weasel out of things..."

As Shinji tried to think of a way to defend himself from Asuka's wrath, Rei stood up and walked calmly to the door. Woosh. The door opened with the sound of escaping air.

"Next inspection... I'll go," she said.

"Ah, Ayanami...." Shinji moved toward the door, to try to stop her. Woosh. The door closed relentlessly.

"Hey, idiot! I'm still talking to you. Let the First go! If it's her, the sooner we know the better!"

"That's not the point, Asuka," Shinji stammered. But if there was a point, he wasn't sure what it was. After that, the inspections continued until midnight, but in the end, the cause remained unknown.

"Ritsuko, I'm sending the kids home," Misato said as she entered the operation room with coffee. "You're still worried, aren't you?" Ritsuko silently received the offered cup.

"Obviously, Major Katsuragi," she said. "Even though it was for only a moment, the identification pattern turned blue."

"Is there a possibility of a screen display error?"

"If so, we need to know that too. Mankind must be ready to fight the Angels even with a buggy system."

"...That's true," Misato said, looking at the mug in her hands.

"Even if it's just a bug in the screen display software, we have to know the cause. Considering the role of NERV, we can't just leave it alone. It could be a fatal flaw. I don't know if it's connected... but it has to be found." Misato looked at Ritsuko, waiting for a response. Her friend said nothing for a long moment as she sipped her coffee.

"So, what's the real reason you called me down here?" Misato finally asked.

"I want you to keep Rei for a while." Ritsuko said between sips of coffee.

"You want me to monitor them together," Misato surmised.

"Yes. Until I understand the cause of this anomaly. The Identification pattern was Blue." Ritsuko continued. "That pattern only comes from an Angel. The fact that it was displayed during the test of the three means each of them, even Rei, has to be suspected of being an Angel in disguise."

"I understand," Misato said with a serious look. "I already have two of them. I might as well care for all three together until we sort this out."

2. Contents of solo play

In solo play, the player will play one character, chosen from Shinji, Rei or Asuka. The player can only be one of these three and will spend the game as that person.

It is up to the player to solve the mystery and return the story to what it should be, or to change the development of the story in a way that has nothing to do with the original sequence of events.

No matter how you progress, the resulting ending will be the truth for you, so act as your chosen character.

Asuka: There is only one thing that needs to be said at this stage. Read the prologue and figure out who you want to play.

Shinji: Can it only be one of the three of us?

Asuka: Are you stupid? That's what the rules just said!

Shinji: But which one should they choose?

Asuka: Well, since the content is the content, I don't think there is any advantage or disadvantage in choosing one over another. Speaking candidly, they should choose their favorite character.

Shinji: Okay. I guess that sounds like it could be fun.

Game flow

The game begins with the arrival of Rei at Misato's apartment and continues until the first Event is experienced.

After experiencing all 11 Events, use the flowcharts in the back of this book to follow the results of the events and reveal a corresponding ending.

After playing, you can transfer the results of any solo play sessions into a multiplayer setting.

Asuka: To tell the truth, I don't think I'll be able to stand living in the same house as the First...

Shinji: Asuka, you can't just say that.

Asuka: Shut up, Shinji! Living with such a woman would give anybody a headache, but... an order's an order.

Rei: Yes. It is an order.

Shinji: Ayanami...

Asuka: These tests had better clear this up quick. I don't know what the results will be, but anything's better than continuing to live with her.

Shinji: Are you okay with this, Ayanami?

Rei: I'm good.

Shinji: Ayanami's okay with it, Asuka.

Asuka: Great. If she's good with it, I feel better already.

3. How to play

Play procedure

The game is played in the following way.

1. Copy the character sheet

Select the character you want to play from among Shinji, Rei and Asuka, and copy the character sheet at the end of this book.

2. Open the page to the first Event

Solo play proceeds in numerical order, such as Event 1 → Event 2 → Event 3.

To start the game, please open to "Event 1. The Fourth Roommate" on the indicated page. The lives of the three characters will begin.

3. Read "What Happens"

At the beginning of each Event, there is a "what happens" section that serves as an introduction to the event. Please read it first to understand the situation.

4. Choose an action

Once you've read "What Happens" you have to decide what to do as a character. There are several options to choose from. They are listed such as 1 or 2 and will often require a "die roll" to resolve. Since the options are the same for Shinji, Rei and Asuka, it's necessary to ask "how would my character act?" But making the choice is up to the player.

If you choose an action that suits your character, you will get the results that are appropriate to that character.

5. Check for success in the chosen action

To resolve an action requires beating a target value using a skill or attribute often combined with the rolling of dice.

Example: <Skill> = target value 15

The instructions will tell you if dice are to be used to resolve the action. If you attempt an action using an attribute or skill and achieve the target value or more, you succeed. If you do not reach the target value, you fail. For example, let's say in this sample case Shinji is selected and the action is based on Shinji's physical attribute of 9. Shinji rolls two dice and adds the result to his attribute. If the value is 15 or more he succeeds. If it is 14 or less he fails. Depending on the selected action, a die roll may not be necessary, in which case, proceed directly to "Results".

6. Results

In "Results", the ending of the event is described based on the action the character took and the success or failure of that action. If you choose Action 1 with Shinji and succeed, read the Result of Shinji's action for Action 1, if you choose Action 2 with Rei and you fail, read the Result of Rei's action for failing Action 2.

The results are written in the order of Shinji, Rei and Asuka, so when you look at the results, it will be easy to open to the correct entry if you remember that order.

Once you complete an Event, move on to the next Event.

Asuka: It's not like it's difficult. But what you need to be careful about is not looking at the results of the other characters by mistake. Oh, and don't forget to check whether you are rolling for a Skill or a plain old Attribute.

Shinji: Check for a Skill or an Attribute?

Asuka: Idiot. How can you not know something so basic? Checking for a Skill or an Attribute is based on the MAGIUS Start book...

Rei: Page 18.

Asuka: Yes, it's on page 18. I could have remembered the page number immediately without the First telling me.

Shinji: How does that work?

Asuka: For details, see the Start Book. But to put it simply, for a basic Attribute you just roll 2D. But when you roll with a Skill, you roll 3D and select any 2D from among them. For the time being, though, lets stick to the data you'll need to keep track of.

Based on the results of the Actions in the Events, the player will record certain data on the character sheet. The results will tell you what to mark, but for reference here is a brief explanation.

Game data (see character sheet)

- Check Mark.....When the results tell you to check off a mark, this is where you will record that check mark. When something related to an event, character, or Angel occurs, there are numbers from 1 to 7.
- Friendship.....Indicates the degree of friendship with the other two characters (ie: Rei and Asuka if Shinji is selected). The lowest is 0, the highest is 7, and the number with the mark is the initial number of the game. It never drops below 0.
- Cards.....Data that indicates how many cards can be drawn at the start of a multiplayer game. The lowest is 0, the highest is 6, and it is 0 when the game starts. Until you play a multiplayer game, you can ignore this data, though you should keep track of it.
- MP..... This is a numerical value that shows the character's synchronization rate with an EVA. The data at the start of the game varies depending on the character, but in solo play, the upper limit value fluctuates. If you're not playing a multiplayer game, you can ignore this data.

Asuka: Well, as you just read, these numbers may change depending on the result of the events, so write them on the character sheet each time.

Shinji: It has a scale, so should I check this?

Asuka: Yes. Also note that the "upper limit" of MPs fluctuates. The upper limit is "the limit of the character", so if you have this, it will be easier when you are playing a multiplayer game. Well, this is easier to follow if you actually look at the character sheet.

Shinji: Hmm. Let me just check the sheet...

Asuka: The initial friendship level for me with the First is of course 0. I've put 2 on you, so you're welcome.

Shinji: Thank you... But I'm not happy just because you like me more than Ayanami.

Asuka: It's fine. She has a higher degree of friendship with Shinji than with me anyway. We hate each other.

Rei: I don't hate you.

Asuka: But you don't like me either, right?

Rei: Correct.

Asuka: Well, I don't like you either. So, we're good.

Transition to multiplayer

If you want to play solo for the purpose of creating a character before playing with multiple players, please only play up to Event 7. Please stop playing after "After-school test". To play after Event 7 requires multiple players.

Asuka: The same explanation should hold for multiplayer mode as solo mode.

Shinji: Okay.

Asuka: Let's go to the next explanation.

End of the game

The game ends when all the events are over. When the game ends, refer to the "Results Chart" for each character in "Chapter 4 Solo Play Ending" and select the appropriate ending.

Asuka: Each character has 5 possible endings. It's not a large number, but it's reasonable because this story is in the middle of the series between episodes 16 and 17.

Shinji: Hmm... It feels like the ending should be connected to the main story.

Asuka: That's not always the case.

Shinji: What?

Asuka: Look at it like this. If the ending of solo play is just "leading to episode 17", there is no need for more endings.

Shinji: Uh, yeah. I suppose.

Asuka: First, you get what I mean, right?

Rei: There may be consequences that differ from the original timeline, but overall, the main story still proceeds the same way.

Shinji: I see.

Asuka: From those sweet words I detect you agree with me, First.

Rei: If it matters so much to you, I apologize to you.

Asuka: If you apologize, I'll feel worse!

Shinji: Hmm. So, the end depends on the play, but overall, the timeline is still unchanged.

Asuka: Shinji, don't just summarize everything I say!

Shinji: Well, I just wanted to be sure.

Chapter 3 Solo Play Events

"Event 1. The Fourth Roommate"

■ What Happens.

Shinji and Asuka were sent home after having gone through every possible examination. By the time they got back to Misato's apartment, it was well past midnight. Asuka dropped her bag on the floor as she passed through the door.

"That was a joke! They put us through all that testing and they still don't know what happened!" she fumed loudly.

Pen Pen poked his face out of the refrigerator in surprise to look at them.

"Stop it, Asuka. You're going to wake up the whole neighborhood with all that noise. It's late," said Shinji.

"How can you not be angry?"

"Why should I be angry? We were suspected."

Asuka focused all her anger on Shinji. "How is it our fault there was an Angel reaction? If you won't stand up for yourself, you don't deserve to be called a man!"

Just when Asuka's hysteria was about to shred Shinji's patience, Misato walked in the door.

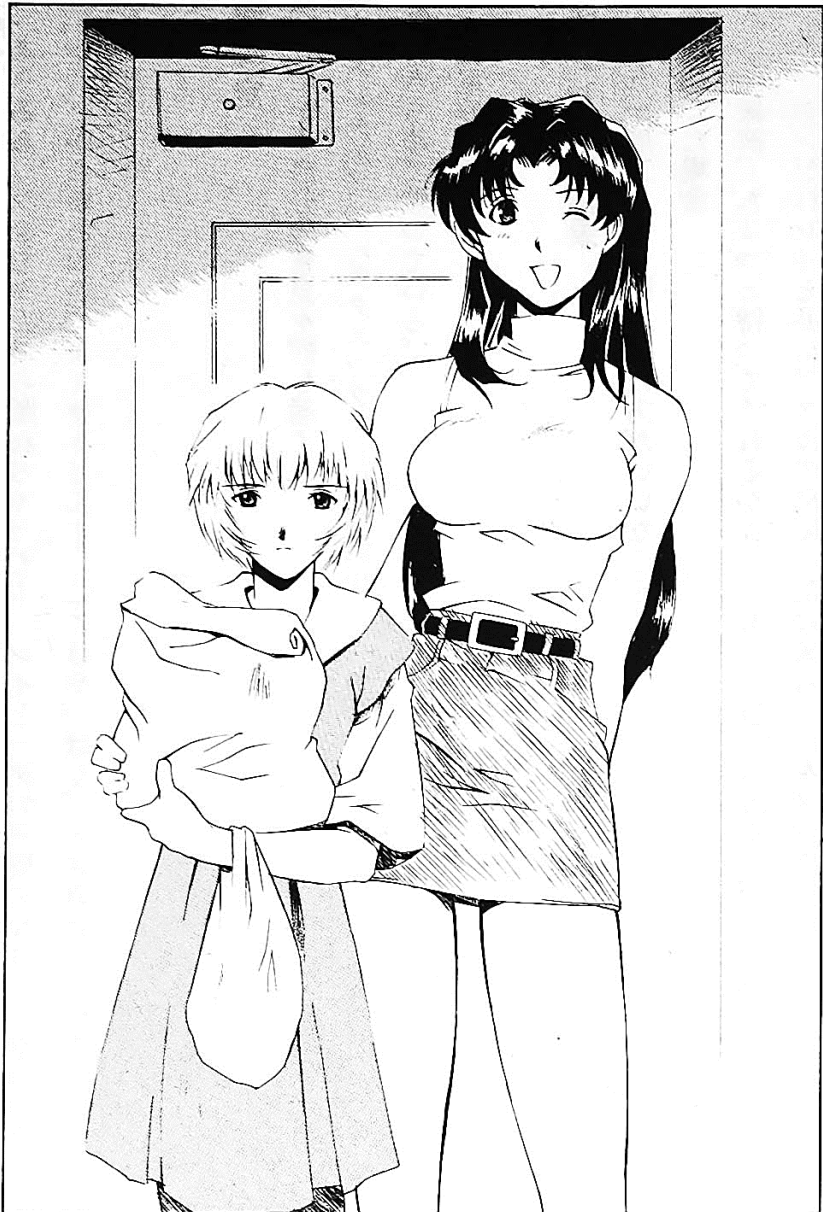
"I'm home. Both of you had a rough day. Sorry."

"Welcome home, Misato-san! Why are you so late?"

"I got delayed a bit." Misato turned to someone outside in the hallway. "Well, come on in."

At Misato's call, Rei Ayanami came in through the front door holding a small bag.

"Ayanami? Misato-san, why is Ayanami here?"



"I'm afraid she'll be staying with us for the time being," Misato said as she headed to the kitchen in search of a beer.

"Excuse me, what? She's going to be living here too?" Asuka cried, following Misato.

Misato was already downing her beer. "Only until the cause of today's reaction can be understood."

Asuka exploded.

"I'm not kidding! If the First lives here, I'm leaving!"

"This isn't a request, Asuka. This is an official order."

"But we can't live in such a small place with one more person.

There aren't enough rooms."

"Is there something wrong with her sharing a room with one of you?" Misato asked.

"I do not wish to be a bother," Rei said plainly.

"Don't be silly, Rei. What do you say, Asuka?"

"I won't do it! Why don't you let her stay in your room, Misato?"

"I'd do that if it was possible. But I'm disagreeable in the morning and my work hours change. Come on, Asuka. It'll be fun!"

"No way! I absolutely refuse to share my room!" Asuka yelled and quickly stormed back into her room. Misato smiled with a wry smile as she watched her go. "Well, I had a feeling this would happen. What should we do?"

Rei stood up from the chair where she had been silently listening to Asuka's rant.

"If it is okay...I can sleep in Ikari's room."

"Huh?" Shinji stammered. "Ayanami and I in a room together... what?!"

Embarrassed by Rei's words, Shinji's face glowed red.

"Oh, Shin-chan, don't be a prude! Don't you want to sleep in the same room as Rei?"

"Don't make fun of me, Misato-san! I think it's better she shares a room with Asuka..."

■ Choices

1 Push your opinion!

- <Mental> or <Technique> = target value 16

2 Give up and keep silent.

- No die roll required

For each character, there are different Results. Please go to the result appropriate to the character, choice and if successful or if unsuccessful.

■ Shinji's results

1 Shinji tries to convince Asuka again...

● If successful

"Ayanami, can you wait a minute? I'll try to persuade Asuka again."

Shinji knocked on the door when he reached Asuka's room with Rei.

After waiting for a while, the door opened a little and Asuka, who looked moody, peered out.

"What do you want, Shinji?"

"Oh... I just came to say I think Ayanami should share a room with you."

"You're so persistent! Nothing is worse than an annoying man!"

"But....." Shinji's words were cut off. It was obvious from Asuka's glare that it was useless to talk any more. "Okay... fine let's go, Ayanami."

Shinji started toward his room with Rei, who had listened to the conversation in silence. Asuka rushed into the hallway and blocked their way.

"Wait a minute, Shinji! The First is going to sleep in Misato's room, right?"

"She has to stay in my room. There's no other place..."

"What? Where will you sleep?"

"Where? Well, it is my room..."

Asuka's complexion changed when she heard Shinji's words.

"What are you thinking, you pervert! What are you going to do with the First in your room?"

"What? No! Asuka, you've got the wrong idea!"

"Shut up! And you, honor student! Do you think just because Shinji looks harmless, he's not an animal?"

"I have no opinion..." Rei began, but Asuka grabbed her arm and pulled her into her room.

Shinji tried to explain. "Asuka, wait, it's not like that!"

"It's a good thing I came out here when I did! Shinji, if you enter this room even one step without permission, it will be the death penalty!" After saying that, Asuka slammed the door closed.

It may have led to a misunderstanding with Asuka, but in the end Shinji didn't have to share a room with Rei after all.

(Shinji gains +1 MP and +1 Card)

● **If unsuccessful**

Shinji told Misato his opinion.

"Well, if that's how you feel, Shinji, you're going to have to persuade Asuka."

"What! You want me to do it?"

"Come on! Do your best!"

Shinji had no choice but to go to Asuka's room. For a long time, Shinji just stood there, not knowing what to say, until suddenly the door flew open and Asuka appeared.

"What the hell do you think you're doing standing in front of my room?!"

"Hi, Asuka... Umm... about Ayanami..."

"Are you still on about that? Don't even think about asking!"

Asuka yelled, slamming the door in his face.

Shinji, not sure how to react at being refused, went back to Misato and Rei.

"On second thought, I'm okay with Rei staying in my room... Come on, Rei."

Misato got up from her chair in the kitchen and made her way toward her room. However, she was already pretty drunk, and unable to walk straight.

"Hey Misato," Shinji asked, concerned. "Are you okay? You seem pretty drunk."

"That's right! I'm drunk! So how about a hand there, Shinji-kun and Rei!"

Shinji and Rei helped Misato into her room (or at least tried to). When they got inside, Misato slid open a door.

"Well? What do you think of this small room?"

"Misato-san, isn't that just a closet?"

"You're absolutely right, Shinji-kun. But if you look closely, you'll see there's just enough room for one more housemate in here. It's okay, Rei, try it out..."

Then Misato drunkenly pushed Ayanami into the closet...

"Comfy, huh? I wanted to keep Pen Pen in here, but it's too hot for a penguin."

"Misato-san, are you kidding? You're drunk... Ayanami can't sleep in there."

"This is fine for me..."

"But Ayanami..." Shinji, began, but was cut off as Rei closed the closet door in his face.

"Don't worry. She'll be fine, Shinji," slurred Misato as she flopped down on her futon. "Snug as a bug in a..."

Misato never finished her sentence as she let out a snore. Shinji had no choice but to return silently to his room.

After a sleepless night, morning finally arrived.

Still hungover from the night before, Misato's pale face appeared in the kitchen.

"Good morning everyone! Ah, Rei, sorry about last night. I was pretty drunk..."

"It's alright. It was not a bother."

Rei's unemotional tone and words had the opposite effect on Shinji, who felt his chest rise with irritation.

"If I had just tried to persuade Asuka more firmly, this wouldn't have happened," he thought.

(No parameter change)

2 “Give up and keep silent.”

Shinji led Rei to his room.

The two of them lay down side by side. Even though they slept on different futons, the fact that there was a girl sleeping next to him put extraordinary pressure on Shinji.

"I can't sleep....." he groaned, pulling his pillow over his head.

For her part, Rei slept peacefully while Shinji tossed and turned all night long.

(Shinji's friendship with Rei increases by 1, his friendship with Asuka decreases by 1. Check mark 1)

■ Rei's results

1 “I'm fine staying in Ikari's room.”

● If successful

"Shinji will show you the way..."

"What? Um..."

Unable to stand up for himself like Asuka, and unable to come up with a good excuse, Shinji was forced to take Rei to his room.

As they walked down the hall, Shinji nervously asked Rei, "Hey..."

Ayanami are you sure you're all right sharing a room with me?"

"Why?.....Is it a problem?"

"You really don't know? Ah, here it is."

Shinji opened the door for Rei who entered the room without hesitation.

"It's a bit small... but for now, Ayanami you should use the bed."

"I understand....."

Rei puts her small bag down beside the bed and suddenly began to take off her uniform.

"Ayanami?! What?! Wait!"

Rei, in her underwear, slid calmly under the covers on the futon. She looked up at Shinji, who was standing there, his face glowing bright red at the unexpected situation.

"I am going to sleep now. We will be busy tomorrow because of what happened at the failed synchro test today..."

Rei closed her eyes and immediately went to sleep.

"She's so trusting... or does she really not know?" Shinji marveled. Conflicted but terribly tired, Shinji lay down on the floor across the room and pulled a blanket over himself.

"Good night, Ayanami..."

(Rei's friendship with Shinji increases by 1. Check mark 1)

● **If unsuccessful**

"Then Ikari will show you..."

Shinji didn't know what to do and looked between Misato and Rei in desperation.

"It's no use complaining, Shinji-kun. I'm afraid it's the only way... your room is the only one."

Misato drained her beer in one gulp and stood up from her chair.

"Just kidding! Come on, Rei. I'm sorry to tease you, Shinji. I'll show Rei to my room."

They left Shinji alone in the kitchen as Misato guided Rei to her room.

"Whew..." Shinji felt incredible relief that the problem was resolved.

(No parameter change)

2 “Give up and keep silent.”

Rei said nothing.

"Well, I don't think it's appropriate for Ayanami to share my room..." Shinji murmured and fled into his room. Rei who had been left behind looked at Misato.

"Well, Rei. Do you mind sharing a room with me?"

"If that is the decision," Rei said.

Rei followed Misato to her room and spent the night there.

(No change in parameters, +1 Card)

■ Asuka's results

1 "Say all you want! I'm not sharing my room!"

● If successful

"Ugh!" Asuka woke up the next morning alone in her room. She cautiously looked into the kitchen and saw Shinji preparing breakfast as usual and Rei sitting in a chair gazing at his back. Asuka slipped into Misato's room and shook Misato awake.

"Hey Misato, what happened with the First?" she asked.

"Shinji decided to let Rei sleep in his room last night."

"What!? She didn't sleep in here with you?"

Asuka returned to the kitchen and stared at Rei furiously. Rei looked back at her without emotion.

"Can I help you?"

"I can't believe it... how could you sleep in the same room with that... that beast?!"

Shinji, who didn't like being called a beast, interjected.

"It wasn't like that. We were in the same room, but we were sleeping in different places."

"Still..."

"I don't see what you're complaining about, Asuka. If it wasn't for you, it wouldn't have happened."

"So, you're saying this is my fault! I'm not the one who asked her to stay here! The least you could have done is show some decency!"

Shinji couldn't argue with Asuka's words and remained silent.
(Asuka's friendship with Shinji decreases by 1 and MP -1)

● **If unsuccessful**

Asuka woke up the next morning and saw that Shinji was sleeping under a blanket in the living room.

"Shinji! Why are you sleeping in here?"

"Um, I decided Ayanami should use my room. So..."

"You really are pathetic! What was the First thinking! "

Asuka marched down to Shinji's room and confronted Rei.

"Hey, honor student! What the hell were you thinking, kicking Shinji out of his own room and making him sleep in the living room?"

"I did not kick Ikari out."

"That's weird! Shinji may be annoying, but you're unbelievable!"

"I do not understand."

"Like hell you don't! From now on, you're sleeping in my room. Got it?"

"Yes."

Asuka stormed out of the room, passing Shinji in the hall.

"Tha... Thank you, Asuka"

"Are you kidding!?! I couldn't sleep in a place with such things going on!"

(One more friendship with Shinji)

2 “Do it yourself. I don't know anymore!”

Although she refused to share her room with Rei, Asuka, was wondering what had happened to her the night before. She quietly left her room and found Rei asleep on a futon by the living room window.

"Honor student... why are you sleeping out here? Didn't you share the room with Misato??"

"Major Katsuragi stayed up late... apparently she forgot she had work from yesterday to finish before this morning," Rei explained.

"That's why you're sleeping in the living room! Misato should be ashamed of herself. I mean at least Shinji has an excuse because he's a man!" After thinking for a moment, Asuka told Rei, "I suppose it can't be helped. You can stay in my room... but only when you sleep at night! I don't want anyone to disturb me during my private time."

"Understood....."

(Asuka's friendship with Rei increases by 1)



Event 2. “Things that move at night”

■ What Happens

"Aaah!?" Shinji's horrible scream echoed in the living room.

"Ikari-kun?" Rei looked up from the book she was reading.

Asuka hits her knees on the table in an attempt to get up. "What the hell are you screaming about, Shinji?"

The two of them looked to where Shinji was staring out the window wearing a startled expression.

Outside the window it was a dark. The night was gently illuminated by the moon.

It wasn't quite midnight, but well past dinner, around the time they would normally be bathing and preparing for bed. They hadn't had anything to talk about, so the sound of the TV was left on. Nothing seemed out of the ordinary until Shinji's scream had broken the stillness.

"Hey! Shinji! You idiot!"

"What?" Shinji finally responded, roused by Asuka's angry voice. It wasn't until then that he realized he had raised his voice. His stunned expression turned into one of dismay.

"Ah, sorry, it was nothing..."

"Nothing!?" Asuka raised her eyebrows sharply as Shinji reflexively apologized and bowed.

"You made me hit the table so hard it'll probably leave a bruise!"

"Sorry... I thought it was something. But it wasn't really. It was just... outside the window..." Shinji suddenly cuts his words and looked out the window again. "I felt like I saw something out there..."

Though he tried to play it off casually, there was a note of fear in his voice.

When Rei heard it, she stood up silently, opened the sliding door, went out on the balcony and looked around slowly.

"There is no one here and I do not see anything unusual."

"I know. It was nothing. There's no need to check it out!" Shinji said it so emphatically that Asuka looked at him sharply.

"Well, if it was nothing, don't be such a baby and make a fuss about it!"

"That's why I said it wasn't anything. I only said I thought I saw something!" Shinji retorted reflexively. But, Asuka, whose knees hurt, was more merciless than usual.

"So then why did you scream over nothing, Idiot-Shinji?"

Even though Asuka's words were biting, Shinji only muttered a muted response. "Weird things have been happening recently..."

"What sort of weird things?" Rei asked Shinji. She was looking at his reflection in the glass as she locked the closed window.

"Um... well, I'll be in a room with nobody else there, but I feel like I'm being watched. I hear strange sounds. Like a talking voice... I think it's inside my own head."

After speaking, Shinji waited for Asuka's next verbal assault, expecting her to be angry again. Surprisingly, however, she was just looking at him with a surprised expression.

"Asuka? What is it, Asuka...?"

"Well, you're saying something stupid, that's all! You feel like someone's watching you? That's just your own conscience!"

Even though Asuka had answered Shinji's question, her tone had clearly changed for moments before. It seemed to betray what

she was thinking beneath her words. Perhaps she really did think something weird was going on, but didn't want to say it out loud. Asuka pursed her lips as an awkward air of silence settled over the room.

Each of the three wanted to talk to Misato, but she wouldn't be home from work till the next day.

What were they going to do?

■ Choices

1 You can never be too careful. Suggest the three of you stay up together tonight.

- <Mental> = target value 15

2 You decide to do nothing, and then leave the living room.

- No die roll required

■ Shinji's results

1. Isn't it better to have three of us be together tonight?

● If successful

"I think... I think, wouldn't it be better if the three of us stuck together tonight, just in case?"

"Yes." Rei nodded briefly at Shinji's words.

Asuka, who was just looking for an excuse to heap insult onto anything Shinji suggested, cursed under her breath at Rei's reply.

Even though it was a cautious proposal based on the fact that they were living with Rei, and the fact that the "Angel reaction" had occurred, and she actually agreed, she was fully prepared to oppose it just to spite Shinji.

"Little First, does that mean you're saying you and I should sleep in the same room with Shinji?"

"Yes. Unless you would prefer just me to do it?"

In contrast to Rei, who spoke calmly, Asuka was furious and hit the table with both hands.

"I'm not saying that... Fine, I'll spend the night in the same room with you both. But I won't forgive you for anything weird!"

"What do you mean weird?" Of course, it wasn't Rei, but Shinji who dyed his cheeks with Asuka's words.

"Why are you turning red, stupid!" Asuka yelled throwing a cushion at Shinji.

The cushion hit Shinji square in the face, but Shinji's cheeks didn't stop burning.

(One more friendship with Asuka)

● **If it fails**

"I think... shouldn't the three of us stick together tonight, just in case?"

"That's the stupidest thing you've ever said! Pervert!!" Asuka exploded, even though it was a cautious argument based on the fact that they were living with Rei, and the fact that the "Angel reaction" had occurred. "I'll never sleep in the same room as you, even if I die!! Absolutely not!"

"Wait a minute, I didn't mean..."

"It is fine with me," Rei murmured, glancing at the arguing Shinji sideways.

"How can you say that? The guy's clearly a beast!" screamed Asuka.

Finally, Shinji got angry.

"I am not a beast! It's not like I'm going to do anything!"

"Hmm, that's not what it looks like to me, Shinji! The last time we shared a room, you tried to steal a kiss from my sleeping lips!"

Shinji, who was suddenly reminded of the time when he fought the Seventh Angel was suddenly at a loss for words. After all, he had tried to kiss Asuka, even though he hadn't in the end.

"Look, I may have thought about it, but I never did it!"

Disgusted and having heard enough, Asuka dragged Rei out of the living room. Just before slamming the door, she gave Shinji a final angry glare.

Looking at the door with a stunned gaze, Shinji immediately regretted saying anything.

"I should have just kept my mouth shut and never said a thing."

(Decrease friendship with Asuka by 1)

2. "There was nothing there. I didn't see anything."

"I'm sorry I made so much noise... I'm going to take a bath and go to bed..." Shinji said as he stood up, overwhelmed at the tension in the room.

"Wait, Shinji! Do you think you can just throw everything into turmoil and just run away?"

"I'm not running away..." Shinji said vaguely which only increased Asuka's frustration.

"Then what made you scream like a baby. You really saw something outside the window, didn't you?"

"It was... It was all in my mind. I'm sure," Shinji replied, turning awkwardly to face Asuka. But it was clear to everyone that his words were not genuine and were merely a way to escape. Asuka's anger boiled over and she got up, looking for something to throw at him.

"Sorry. Goodnight," Shinji quickly blurted, scurrying out of the room, sensing what Asuka was going to do.

"Idiot-Shinji! Stop apologizing for everything and act like a man!" Asuka screamed at his retreating back, hurling a box of tissues, the closest thing she could find, in frustration.

Listening to her angry voice through the door, Shinji could not help feeling self-loathing for himself because of his cowardice. (Mark Check 2. The upper limit of MP is reduced by 1)

■ Rei's results

1 "It is better for the three of us to work together tonight."

● If successful

"...I think it's better for the three of us to work together tonight," Rei said in her matter-of-fact way.

"Hey! What are you saying, stupid? Why do you say that?" Asuka rushed to argue against Rei's bold statement. Looking back at Asuka, Rei replied in her flat voice, betraying no emotion.

"Because the Angel may be nearby and its identity is still unknown, it's better to be vigilant. Having three people together rather than being alone, we can deal with the situation more quickly."

Rei's words were particularly weighty and persuasive usually because she spoke so rarely and usually with a minimum of

words. Asuka, took a breath preparing to argue back but it eventually turned into a sigh. She shrugged her shoulders as if she had given up and gave her consent.

"Well, there's a point in what you say. I'll help you because there's no alternative."

"Very well." For some reason, Rei's terse reply didn't sound as cold as usual.

(Gain one Card)

● **If unsuccessful**

"...I think it's best to have the three of us together tonight."

"What?"

Shinji and Asuka couldn't understand Rei's sudden words for a moment.

First, don't volunteer to do something so weird, when you clearly don't understand what you're saying."

"What do you mean?" Rei asked.

Asuka replied with a sharp look and angry voice. "Well, if you want to do it, go right ahead. But I won't do it."

"Okay. That's fine." As she spoke, Rei caught sight of Shinji. They stared at each other for a few awkward moments. The Shinji, strangely shy, hurriedly looked away. Staring at each other silently for a few

"Well, it's already time for bed. I'm going to sleep..." Shinji muttered to no one in particular as he left the living room. Asuka shrugged and followed him out.

“...” Rei was left alone. Once the other two were gone, she picked up the book she had laid aside and began to read it again as if nothing had happened.

(MP increased by 1)

● 2 **“There is nothing there.”**

Rei stood up, ignoring the awkward atmosphere in the room.

"I'm taking a shower," Rei said as she walked out of the room.

Shinji and Asuka looked at each other surprised and dismayed.

"Come on, wait a minute, honor student! We're still talking here!"

Asuka said.

"Yes, but it doesn't matter to me," replied Rei in her usual restrained manner as she disappeared into the bathroom, not even turning around.

"Well... That woman! Seriously, what is wrong with her? I can't believe her!"

Asuka turned away from where Rei had just disappeared, but only got angrier. She turned that anger on the only remaining point of focus she could find right then.

"Stupid Shinji! This wouldn't have happened if you hadn't screamed in the first place!"

"What, don't blame me!" Shinji replied in vain.

Rei heard the empty argument continue on the other side of the door. As usual, she was cold and her face was expressionless like a mask.

(No change in parameters)

■ **Asuka's results**

1. "I get it. It would be safer for the three of us to be together tonight."

● **If successful**

"Not that I agree with Shinji... but I think it's better to stay together tonight, just in case"

"Together... why did you agree to that so quickly?" Shinji panicked at Asuka's unexpected agreement. Maybe there was something he should be worried about after all.

"Are you stupid? Even the strange voices you say you're hearing may be related to the Angel. It's natural to be careful!"

Asuka shrugged her shoulders and pursed her lips. However, Shinji was suddenly uncomfortable for some reason, but he still nodded his red face repeatedly.

"Well, just so we can watch out for the Angel. That's right..."

Although Asuka was being amenable to the idea, she turned her eyes from Shinji and looked at Rei.

"That's what I said! You're okay with that, right First?"

"If that is what you want."

"Are you accusing me of actually wanting to spend the night in the same room as you two?" When Rei didn't respond, Asuka leaned forward and continued firmly. "Fine, honor student. You can be the breakwater that separates me and Shinji in the middle!"

Asuka had already decided the positions where they would lay on the futon. Regardless of why she was doing it, Shinji was impressed by Asuka, who had a quickness and determination that he didn't have.

(Increase friendship with Shinji by 1)

● **If it fails**

“Maybe it is better to sleep together just in case, even if Shinji did think of the idea.”

“Sleep together?” Shinji gulped. Surprised by Asuka’s words, his face turned bright red.

“What are you blushing about? Just what are you imagining?”

“Nothing!” Shinji blurted out, panicking at Asuka’s pointed question. “I’m not imaging anything like that!”

"What a twisted imagination! What did you think when you heard that you were going to sleep with you?"

"Honest, I wasn't thinking anything at all!" Shinji approached Asuka, trying to explain. But it was counterproductive. Asuka got right up in his face and subjected him to a merciless rain of accusations.

"No! Get away from me! You shameless pervert!!"

Asuka’s anger was one sided and unfair and Shinji felt weak and worthless. Asuka couldn’t have cared less about that.

(Shinji’s friendship with Asuka decreases by 1)

2. “What are you saying?”

"That's ridiculous...I can't believe thus!" Asuka yelled abruptly, shattering the tense atmosphere.

"You made such a fuss about nothing at all... you’re so stupid!"

Asuka stood up and looked down at Shinji, but didn’t continue to berate him. Shinji was sensitive to Asuka's intention to change the mood, and Shinji responded with a light tone.

Chapter 3 – Solo Play Events

"Well, you're right... I'm sorry for being weird. Haha..." Although his tone was forced, it broke the tension by falling back into the usual pattern of "Asuka gets angry and Shinji apologizes."

"Oh, I don't have time for this anymore. I'm taking a bath," Asuka announced to Shinji and Rei. Shinji wore a relieved expression and Rei didn't seem to notice the atmosphere of the place either way. Asuka turned and headed for the bathroom.

However, just before leaving the living room and closing the door, Asuka couldn't help but stop and look back at the window and wonder if Shinji really has seen something.

(MP limit is decreased by one)

Event 3. “Where’s Dinner?”

■ What Happens

The Summer sun was just starting to set. Shinji, Rei and Asuka were together in Misato’s living room. Misato had not returned home yet for the day.

"Hey, Shinji. Isn't it time to start preparing dinner?" Asuka asked impatiently without looking up from her magazine. She took it for granted that Shinji cooked all their meals.

"Yeah... I suppose it is."

"That's right," was Asuka’s sharp reply. “So why aren’t you making it?”

"I guess I’ve been feeling a little tired lately," Shinji answered a little defensively.

Every day the three EVA pilots were supposed to share the housework chores around the apartment. It was no wonder he was tired.

"Maybe tonight someone else should make it," Rei murmured after a long silence.

■ Choices

1. “I’ll make it.”

● <Housework> or <Technique> = target value 16

2. “It's too late, so let's buy something.”

● No die roll required

■ Shinji’s Results

1. Make dinner after all.

● **If successful**

"I guess I can still make it."

Shinji stood in the kitchen considering.

"What ingredients do we have?"

He opened the refrigerator to find the ingredients. After pushing aside the cans of beer, he finally was able to find enough to begin.

An hour later.

"Hmm, this is pretty ordinary," Asuka complained, though she seemed to be eating well enough.

"But I guess the taste is pretty good."

This was usually the case with Asuka, so Shinji was used to it.

"How about you, Ayanami? Is it okay?" Shinji asked Rei who was eating in silence.

"Yes. It's delicious..."

Shinji's heart felt warm with the compliment.

(Friendship with Rei and MP limit both increase by 1)

● **If unsuccessful**

"Fine, I'll make it."

To be honest, when Shinji imagined the dishes cooked by Rei or Asuka, it was a little scary. Even if he was a little tired, he'd rather make it himself.

"What should I make?" Shinji opened the refrigerator and found some ingredients. He took them out and started cooking...

"Ah!" Unfortunately, he was so tired he kept making mistakes until he could no longer continue.

Scared of how they would react he finally had to call out to the other two.

"This was all I was able to do..."

“That looks disgusting,” Asuka said, then shoved a bite into her mouth.

“Ugh! What is this!?”

Rei tried some and raised her eyebrows in surprise.

“I’m sorry. Should it be like this?”

Shinji tried it himself. It wasn’t fit for humans to eat.

“I’m sorry, I’m sorry!”

Asuka started to yell and Rei simply walked away.

(One MP limit down, one card up)

2. “I’m tired today, so we should buy something”

“I’ll buy something and bring it back,” Shinji said, heading out the door.

He went to a local store and bought some bento. When he got back to the apartment, Misato was just getting home.

“Oh, Shinji-kun, where have you been?”

“I went out to buy dinner for tonight,” he said, showing her the bento in his hands.

Misato looked at Asuka. “Today isn’t Shinji’s turn to cook.”

“I don’t like cooking,” Asuka complained. “And it’s not like I refused. He said he was tired...”

Shinji regretted he’d ever said anything, but at least the bento was good and there were no dishes to clean afterward.

(No parameter change)

■ Rei's results

1. “I will make it”

● If successful

"I will make it," Rei said. Shinji and Asuka looked at her, stunned, as she headed to the kitchen.

"The ingredients are in the refrigerator," she heard Shinji say from behind her.

About an hour later...

The resulting dish was simple and plain.

"I wanted something with a little more flavor," Asuka complained.

"But it's delicious. Very good," Shinji said desperately after Asuka's sharp remark. "Ayanami you're a good cook. Please make something again tomorrow."

"Yes. I'd like that."

(One more friendship with Shinji)

● **If unsuccessful**

"I'll do it," Rei said, getting up.

"Feel free to use whatever's in the refrigerator," Shinji said.

"Understood, Rei replied and headed to the kitchen.

When she opened the refrigerator, she found some vegetables.

She took them out, cut them into suitably sized pieces and cooked them in oil.

"What is this?" Asuka asked when she saw what was on the table.

"Are you not familiar with vegetables?"

The main course was vegetables on a platter. The side dishes were all vegetables too.

"It looks like everything is vegetables, right?" Shinji observed.

Asuka's voice was quivering, as if desperately suppressing emotions. "Fine let's eat it anyway," Asuka said, sitting down. She dug in immediately.

"It has no taste at all!" she declared, slamming her chopsticks on the table.

"It's subtle, but delicious," Shinji remarked. But Shinji's words only fueled Asuka's anger.

Asuka stood up and turned to leave.

"Are you not going to eat?" Rei asked, mildly.

"I can't eat this! There's no meat or fish in it. And I don't feel like eating a dish that doesn't have any flavor!" Asuka stormed away leaving Shinji and Rei to finish the meal.

(No parameter change)

2. "I will buy something"

"I'll buy something nearby," Rei said and left the house. She went to a nearby convenience store and bought several meals.

"They're all the same," Asuka exclaimed when she saw the bento boxes.

"I have seen these eaten in this house before and those who ate them seemed satisfied."

"That's right," Shinji added quickly.

Asuka was not so generous. "You're a poor excuse for a roommate, Honor Student."

(One MP limit is down)

■ Asuka's results

1. "That's okay. I'll manage it"

● If successful

"I feel good today and I'll make it," Asuka said.

"Huh!?" Shinji replied in a surprised voice. "You never make it..."

"That's not true..." Asuka replied petulantly. "Shut up and don't get in my way."

She headed for the kitchen with a spring in her step.

One hour later.

"I've never seen a meal like this," said Shinji, dubiously.

"It's German food. Try it."

Shinji lifted some of it into his mouth.

"Delicious!" he said, with a surprised look.

"Fluffy, right. Honor student, is yours also delicious?" Asuka asked Rei.

"Yes." Rei was a woman of few words, but when she spoke it means something.

"See. Leave it to me to do it right!" Asuka said proudly.

(Asuka's Friendship between both Shinji and Rei increases by one, and gain one card)

● **If unsuccessful**

"Today I will make it specially for you."

"Okay..." Shinji said in a surprised voice.

"Are you saying you think I can't make it?"

"That's not what I was saying..."

"Just shut up and don't get in my way," Asuka said as she headed for the kitchen with a spring in her step.

One hour later.

"What... what is that?" Shinji asked in horror when he saw what Asuka had prepared.

"It's authentic German food. Try it," Asuka said as she forced Rei and Shinji to sit down.

"It looks... strange," Shinji said as he hesitated to eat.

"Something went wrong, but the taste should be amazing," Asuka assured them with a smile, though Shinji noticed she made no move to touch the stuff.

"Why aren't you eating?" Asuka asked bluntly.

"Um, okay, yeah, I'll eat," Shinji replied.

As he reached out for the food and put a bite in his mouth Rei stood up quietly.

"I have no appetite today..." she said. But it was Shinji who was first out of the room as he raced to the kitchen with his mouth on fire.

"What kind of attitude is that? Don't you realize if someone works that hard on something it's proper to show a little gratitude?!"

Asuka's eyes fell on Pen Pen who had waddled up to the table to see what all the commotion was about.

"How about it? You want to try some of my delicious home cooking?"

"Waaak!" cried Pen Pen as he screamed and ran away.

(One MP limit is down)

2. "It's too late, so we'll just buy something"

"It's too late, what if we bought something instead?"

"Yeah, that's fine," Shinji agreed, preferring that to the thought of Asuka actually cooking.

"Okay, it's decided then. Bring something good back, Shinji," she said with a dismissive wave.

"What? I'm going?" Shinji asked, surprised.

“Well, you wouldn’t send two girls out to shop at the most dangerous time of dusk, would you?”

Shinji’s mind swirled trying to come up with an argument until he finally gave up.

Shinji broke when it was swirling vigorously.

"Fine. I’ll go." Shinji went out, feeling tired, but strangely useful.

(Increase friendship with Shinji by one)



"Event 4 "The beginning of the party"

■ What Happens

Glug, glug, glug, aah!

Misato chugged a can of beer all at once.

"Whew, after all, there's nothing better than a cold beer after a hard day's work!" she said, reaching for another can. It was a typical dinner with Misato. It didn't bother Shinji or Asuka and Rei kept eating silently.

"Um...is the food okay?" Shinji hesitantly asked Rei.

"Satisfying and delicious."

"Thanks. I'm glad you like it," Shinji said, looking away and blushing slightly. Asuka noticed his expression.

"Why so humble, Shinji-sama?" Asuka asked with a laugh in a loud voice. "Despite the fact you made it, it was actually delicious."

"I was just asking what she thought," Shinji snapped back.

"Okay, don't fight," Misato interrupted. "Have a beer as a sign of reconciliation"

Misato then forced a beer into each of their hands.

"What?" Shinji and Asuka both exclaimed at the same time. This seemed out of character, even for Misato. They both noticed that there were twice as many cans as usual in front of her.

"Misato, are you drunk?" Asuka's voice suggested she was not worried, but rather amused.

"No thank you, Misato-san. We're still in middle school," said Shinji responsibly.

"Pfft. There's not one junior high school student who's never had a drink. Hey, have a glass too, Rei," Misato slurred, passing Rei a beer as well.

■ **Choices**

1. Stop Misato.
 - <Mental> = target value 15
2. Leave it to the other two and go to bed.
 - No need for die roll

■ **Shinji's results**

1. **“Misato-san, stop it”**

● **If successful**

"Misato, please stop," Shinji said, putting the can of beer on the table decisively. The action made Misato stop suddenly.

"Misato, you're our guardian, right?" he continued.

"Well, yes..." Misato said.

"Then as our guardian, you need to act like one. No parent would give alcohol to minors."

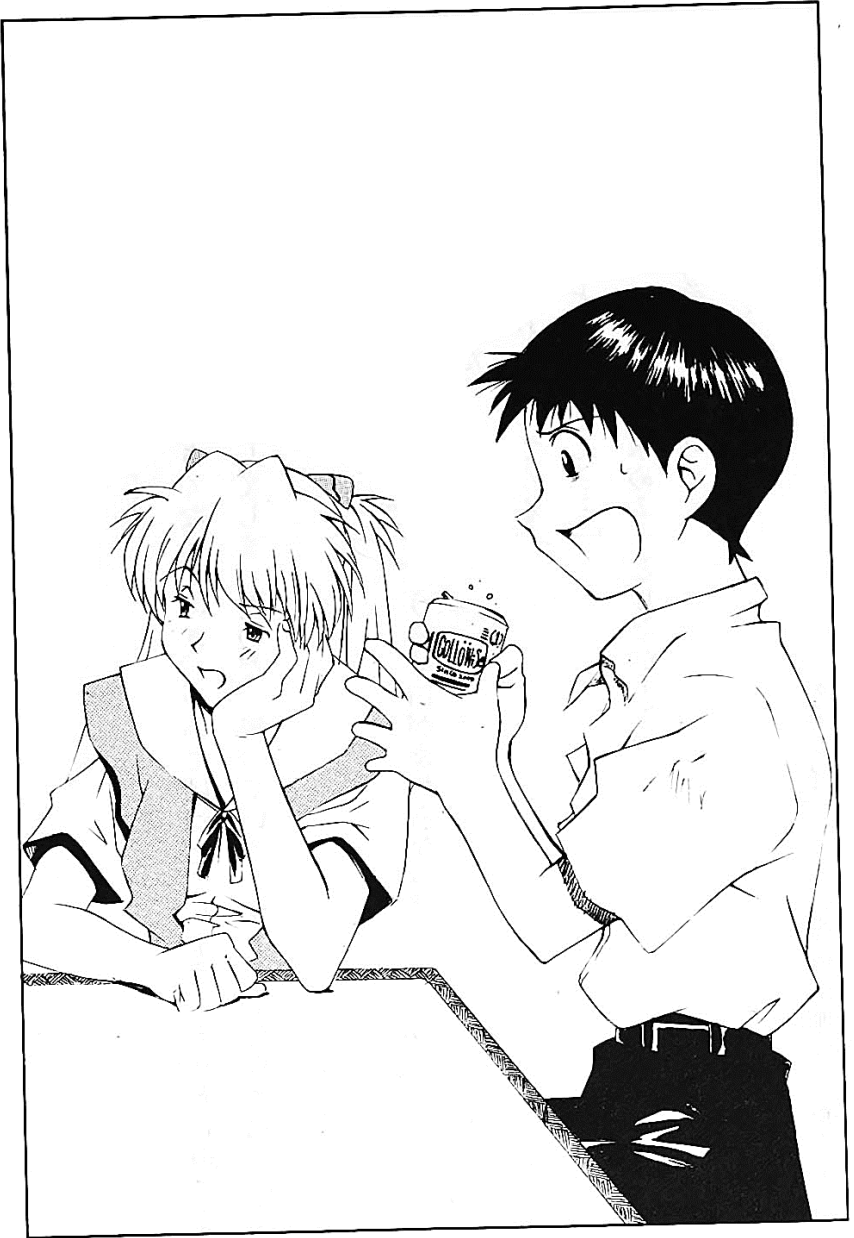
Realizing what Shinji was saying was true, Misato sighed heavily and nodded, clearly intoxicated.

"Yeah, you're right. I'm sorry, I seemed to have pushed the boundaries a little too much."

"It's okay. I'm glad you understand." Shinji returned to his usual weak tone after being apologized to by Misato.

"Finally, Shinji, you managed to act like a man," Asuka said, putting down the other can of beer and heading for her room.

(Shinji's friendship with Asuka increases by 1 and gain one card)



● **If unsuccessful**

"Misato, please stop," Shinji said, hesitantly.

"Aw, come on. Let's drink together without talking like that," Misato said, still pressuring Rei to take the offered can of beer.

"But we're only junior high school students..." Shinji's voice diminished and broke off. He was surprised to see Misato walking toward him. Drunk Misato looked very sexy.

"Then just have a little drink..."

Once Shinji was tongue-tied it was useless for him to try to speak. Misato put her face right in front of his. "It's okay. Don't speak. Just drink."

"Misato..." Shinji tried to ask Rei and Asuka for help...

"Come on Shinji, be happy."

"..."

Shinji felt Asuka glaring and Rei staring without expression. The eyes of the two of them made any sexual thoughts he had at that moment incredibly embarrassing.

(Upper limit of MP increased by 1)

2. I can't keep up with her...

While Misato is paying attention to Rei, Shinji quietly started to slip away.

"Shinji, where are you going?" Asuka hissed at him.

"It's already late and I'm going to bed," he said, backing toward his room.

Rei, who was being pressured by Misato to take the beer, stared at him. Shinji wanted to help her, but he couldn't think of anything to say.

"You see, Shinji. The First needs help." Asuka's voice pierced Shinji like a thorn.

"I'm sorry!" Shinji blurted as he ran out. He hurried into his room and closed the door behind him.

This was Shinji's sanctuary. A place where no one would disturb him. A place where he could escape when he was having a hard time.

However, Rei's eyes had burned into Shinji's heart and he couldn't escape that.

(Reduce friendship with Rei by 1)

■ Rei's results

"I don't want to be a bother"

● If successful

Rei looked into Misato's eyes.

"You're drunk"

"Hey, what's wrong with being drunk?" Misato asked with a laugh.

Rei looked at her coolly.

"If you drink too much, you'll age faster."

Misato blinked and her eyes got wider.

"What... is that true?" The thought seemed to upset her. Shinji and Asuka used the opportunity to set down the beers Misato had forced on them.

"Misato-san, you are looking a little tired today."

"Yes, Misato. Tomorrow's going to be tough. Why don't you go to bed?"

"Well, I suppose that's not such a bad idea," Misato said thoughtfully as she quietly headed for her room.

"Thank goodness. That was really smart, Ayanami. Thank you," Shinji said with a bow.

"Yeah. Misato never makes the best decisions when she's drunk."
(The friendship between Shinji and Asuka is increased by 1)

● **If unsuccessful**

Rei stared into Misato's eyes.

"You're drunk," Rei said calmly.

"Yeah? Well, I can still drink some more, so I must be okay." As if to prove it, Misato downed one more whole bottle.

"The night has just begun!" Misato declared slamming down the empty bottle.

Asuka turned to Rei

"Don't just stand there, honor student, do something to stop her!"

"It's useless. I can't stop her."

Literally, none of them were able to stop Misato's drinking, especially this time.

The best party for Misato and the worst for the three pilots was just beginning.

(No change in parameters)

2. I need to go to rest

"....." Asuka placed the beer firmly on the table.

"Don't you drink?" Misato slurred in disappointment as Rei stood up from the chair to escape.

"I'm tired, so I'll rest first," Rei said, heading for the room assigned to her.

"Wait, wait, Ayanami."

"You can't just walk away like that, honor student!"

Rei heard Shinji and Asuka's voices behind her, but she ignored them and returned to her room and immediately plunged onto the futon.

(One card up)

■ Asuka's results

1. "Misato, get control of yourself"

● If successful

"Stop right there!" Asuka shouted, hitting the table with a bang.

Misato, who was approaching Rei, suddenly stopped.

"Misato, I don't know why you're drinking and getting blitzed, but please stop trying to get the rest of us involved!"

"That's a bit harsh..." Shinji mumbled, but nobody was listening to him.

"I know it's been a lot of work the last few days, but I'm sick of having a drunk person in the same house where the rest of us need to relax."

"I'm just trying to help you all have some fun."

"Hey, Asuka..." Shinji tried to distract Asuka again.

"Shut up, Shinji!" Asuka shouted, silencing Shinji.

"Misato, just be good and stop bothering us!"

"Okay. Okay" Met with such force by Asuka, Misato settled down for the rest of the evening.

(Mark check 1. Increases MP limit by 1)

● **If unsuccessful**

"Stop right there!" Asuka shouted, hitting the table with a bang.

"Misato, I don't know why you're drinking and getting blitzed, but please stop trying to get the rest of us involved!"

"That's too much, Asuka." Shinji's words made Asuka angrier.

"What are you talking about? I'm thinking about you!"

"But there is a politer way to say it."

"Polite!" Something snapped inside Asuka. "Shinji! Whose side are you on?"

"I'm not on anybody's side..."

Asuka's anger towards Misato suddenly turned toward Shinji.

And sitting between them Rei and Misato sat there with embarrassed looks on their faces.

(Decrease friendship with Shinji by 1)

2. You look like an idiot. I'm out of here

"That's it!" Asuka snapped. Seeing Misato act so badly made her angry. She stood up suddenly. "You're such an idiot, I don't want to be around you!"

"Asuka, where are you going?" Shinji asked.

"To bed!" Asuka answered, cutting him off. "I'm leaving Misato to you two!"

"But with one more person, maybe we can convince her..." But Shinji's plea fell on deaf ears.

Asuka returned to her room and dropped down on her futon. She could still hear Misato partying, Shinji pleading and Rei being Rei through the walls. Eventually, Asuka fell asleep.

(One card up)

Event 5 “Everybody keep calm”

■ What Happens

Midnight. The time most living things rest. Even in the perpetually noisy Misato residence, midnight was usually quiet.

“Hmm...” Shinji who had been sleeping comfortably, suddenly woke up. Assuming everyone else was still asleep, he opened the door and left his room.

Where was Shinji going?

Flush.

Shinji yawned as he turned away from the toilet.

Without warning the shower curtain across from him opened.

“Huh? Ayanami?!”

Rei stepped out of the shower, just as if she was living alone, with only a towel draped over her shoulder.

Shinji gave a startled shout, waking up Asuka.

“Shinji! What the hell are you yelling about in the middle of the night!” Asuka complained grumpily as she staggered out of her room to see what was going on.

Her eyes locked on the sight of Shinji and Rei, who were almost naked, facing each other in the bathroom.

■ Choices

1. You try to speak calmly.

- Shinji and Rei use <Mental>. Asuka uses <Calmness> = target value 14

2. Run away.

- No die roll required

■ Shinji's Results

"Um, hey... this is just a misunderstanding."

● If successful

"Calm down, calm down, calm down, calm down..." Shinji said to his heart, repeating it over and over.

"Just what are you two doing!" Asuka shouted at them, her face turning red.

"Asuka, it's not what you think!" Shinji exclaimed, trying to calm her.

Gaze at Asuka in front of her and tell her to lick her. "I was stepping out of the toilet, just as Ayanami finished taking a shower."

Asuka was taken aback by Shinji's calm attitude.

"Is that what happened, First?"

Shinji looked between Asuka and Rei.

"Yes. That is what happened," Rei replied, expressionless as usual. This time, her calmness proved that there really was nothing going on.

"Hmm, it is what it appears," Asuka muttered to herself as she pulled the door shut and went back to bed.

(For some reason, the friendship between Rei and Asuka is increased by 1)

● If it fails

"What's going on here?!"

"..." Shinji tried to make an excuse, but no words came out.

Asuka stood there in silence with her face down, but her clenched fists were shaking. Even without seeing her expression, Shinji could tell what that meant.

"Oh, no. This was just an accident..." Shinji tried to explain, desperately reaching out his hands.

"Don't touch me, you beast!" Asuka didn't want to even hear the story.

"It's not like that!"

"Hmmp! Are you just going to make excuses? You're not a man!" Asuka yelled, escalating the argument.

"It is as Ikari says. It was just a coincidence," Rei said, attempting to calm the fray.

"You see, Ayanami agrees!" Shinji said turning to Rei, only to quickly cover his eyes with his arm and turn away from the still naked Rei.

"Shut up! You should both be ashamed, especially you, Shinji You idiot!" Asuka yelled louder than before, her voice echoing throughout the room.

(One less friendship with Asuka)

2. I can't even explain...

"Excuse me," Shinji said, averting his eyes and trying to pass between Asuka and Rei. He didn't make it far.

"Stop right there, Shinji-sama," said Asuka grabbing his shoulders.

"Where do you think you're going?"

"Hahaha, it's already late and I'm going back to bed..."

Shinji looked up sheepishly at Asuka with an apologetic smile.

Asuka smiled back, but it was a decisively unfriendly smile. T

"Well, late night is an enemy of beauty, isn't it... pervert!"

The right hand of Asuka snapped out like lightning leaving the clear imprint of palm on Shinji's cheek.

(Raise MP limit by 1, decrease friendship with Asuka by 1)

■ Rei's results

1. It's better to explain

● If successful

"Hey, what are you two doing!" Asuka yelled, her face turning red.

"No, it's not like that..." Shinji stammered, similarly blushing as he tried to make an excuse.

Neither was in a state where they could speak calmly.

"If it's nothing, why are you trying so hard to explain it?"

"There is nothing to explain. It was merely a coincidence that we are here together." Rei's calm words were as cool and unemotional as ever. Both Shinji and Asuka were taken aback.

"It's exactly like Ayanami says. It's just a coincidence, and nothing else..."

"Hmm....." After a little thought, Asuka looked between the two of them.

"..."

An awkward moment passed.

"So, do you believe me?" Shinji's apologetic voice broke the silence.

"I'll believe you this time, but just watch yourselves," Asuka said, turning her back and marching straight to her room.

(Increase friendship with Shinji by 1 and MP increased by 1)

● **If it fails**

Shinji and Asuka awkwardly faced each other.

The only sound was Shinji and Asuka's breathing.

Rei, who was expressionless and rarely showed her emotions, turned her face away.

"Shinji!"

"What?!"

Shinji moved backwards. But his back immediately hit the wall.

There was no escape. Asuka raised her hand.

"You pervert!!" Asuka yelled at the precise moment the sound of a slap striking Shinji's cheek echoed throughout the apartment.

(MP upper limit value is decreased by 1)

2. It feels better to just walk away

"Hey, what are you guys doing!" Asuka yelled, her face turning bright red. "Was Shinji trying to pull something creepy!?"

"Oh, no. I'm just..." Shinji's voice trailed off as he answered shakily.

"Good night," Rei said simply as he ignored the two and slipped toward the room assigned to her.

"Hang on a minute!" Asuka said, stopping her.

"It is none of your business what I or Ikari do. I don't ask where you go." That said, Rei left.

"Ashe's unbelievable!"

"Asuka calm down," Rei heard Shinji begin. Then she closed the door and decided not to worry.

(The friendship with Asuka is reduced by 1. The card is increased by 1.)

■ **Asuka's results**

1. "Wait a minute. Stay calm about this"

● **If successful**

Keep calm, Asuka, she heard herself say in her heart. Analyze it objectively.

Asuka knew Shinji was pretty ignorant. And she doubted the First had any real feelings anyway. There was a very low probability that the two of them were actually up to anything. Therefore, Asuka could only come to one conclusion...

"Asuka! It's not what it looks like!"

"Just shut up!" Asuka said, cutting Shinji off. "Knowing you two, this was just a stupid coincidence."

"Well, yeah..." The look on Shinji's face told Asuka her guess was correct.

"First, you can't just act like you're living alone, so think and act more responsibly!"

"I will," Rei responded obediently, and Asuka returned to her room in a good mood.

(Mark check 2. MP upper limit and cards are increased by 1)

● **If it fails**

Keep calm, Asuka, she heard herself say in her heart. I have to calm down and analyze why these two people are facing each other like this...

After taking a deep breath, Asuka raised her head. Her thoughts had settled.

"I see. I think I get what's going on here."

Shinji's face flooded with relief at her words.

"I'm glad you understand."

"I certainly do, Shinji," Asuka said, taking a step toward him.

Smack!

Asuka slapped him as hard as she could.

"What did you do that for!" Shinji cried in surprise, rubbing his struck cheek.

"That's the result of a calm analysis. There's no way the First thought to do this, so there's no explanation except you snuck in here to get a peek at her."

No matter how smart Asuka was, she lacked calmness. It often led to just such ridiculous misunderstandings...

Later, Asuka learned the truth about Shinji from Rei and things settled down between the three.

(No parameter change)

2. I don't want to be in such a place as this

"Oh... it seems I'm in your way," Asuka said, turning and walking quickly away. "Goodnight!"

"Wait, Asuka!" Asuka ignored Shinji's entreaties and returned to her room. She covered herself on her futon and held her breath. There was no way those two could possibly be having such an indecent relationship. Still...

Asuka's heart was still pounding. The excitement didn't stop until the next day, when Shinji proved to her that the whole thing had been a misunderstanding.

(Asuka's friendship with Shinji and Rei decreases by one. MP limit has been increased by one)

"Event 6 "Regular Test"

■ What happens.

Almost every evening over dinner, Shinji and Asuka would fight over something. But tonight, as Misato, Shinji, Rei and Asuka sat around the table eating, the usual fight did not begin.

"Tomorrow we three have regular school exams," Asuka said, sweating at the thought. Even an Eva pilot can't escape tests when she's in school.

"Hmm... well I guess you should study for a little while. We don't want you to have to do a makeup test," Misato said in response. However, she was less than persuasive as she swilled down another beer.

"I'm not stupid like Shinji. I'll be fine," Asuka snapped back.

"What's that?" Shinji said looking up.

Asuka was a genius girl who had graduated from college already, but when she first arrived, she couldn't read and write Japanese very well. Now that she'd had a chance, she was more accomplished than Shinji.

"Well, that's because you're smart, Asuka. But if you're not careful, you'll lose your lead." Misato observed.

"Hah, like that's going to happen," Asuka said in a condescending tone.

Shinji realized there was no winning today's quarrel. Asuka was in a strong position to win.

"Excuse me," Rei said, ignoring the two. She put her dishes in the sink and immediately returned to the room she was using.

■ **Choices**

1. "It's a test, so study hard for a while."

- <Mental> = target value 14 for Rei and Shinji. For Asuka Target Value = 18.

2. Decide it is more important to be well rested for the coming battle with the Angel, and get some sleep.

- No die roll required.

■ **Shinji's results**

1. "I have to study a little..."

- **If successful**

"I'll show Asuka." It was true, Asuka was far better than Shinji.

However, Shinji decided to make her regret belittling him.

So, at least for this test, Shinji studied overnight so that he could look down on Asuka. He wasn't sure it would happen, but that wasn't going to stop Shinji from trying.

Perhaps because of that, in the exam of the next day, he was able to achieve a score that exceeded Asuka in the subject.

"I beat Asuka!"

"What? What do you mean? Don't get so excited just because you did better in a subject that I'm not good at!"

That being said, Asuka couldn't help recognizing Shinji's hard work.

At the NERV headquarters later

"Shinji, you're not that awesome! I just had the highest sync rate ever!"

"That's just today! Let's see what happens tomorrow!"

Shinji was obviously feeling pretty good about himself to say something so competitive.

(Upper MP limit increases by 1 and 1 card up)

● **If it fails**

"That Asuka..." Although Shinji's performance may have been inferior to Asuka, Shinji wasn't going to just roll over and take it lying down.

Shinji was determined to stay up all night studying if that's what it took to beat her.

"Huh? What happened?" Shinji woke up with his head on his desk. He had stayed up late, but his drowsiness had finally caught up with him. Still, he had never been able to concentrate properly and now he'd cut into his sleep as well.

Of course, lack of sleep didn't help his test taking skills, and Shinji scored the lowest score ever.

"Oh, Shinji-sensei can't even get good grades when he studies, right?"

"Um..." Shinji didn't have any words to respond to Asuka's taunt. And it only got worse when Misato looked at the bags under his eyes.

"Shinji-kun, I said you should study, but I'm a little worried it's going to affect your synchro test."

"I'm sorry."

Shinji, who lacked concentration, ended up with a disastrous result in the synchro test at NERV headquarters that day.

(One MP down)

2. Tests don't matter...

"I don't think I can beat Asuka because she's such a better student," Shinji thought and decided to go to bed immediately. Shinji felt that since he was just an ordinary junior high school student, there was no way he could beat Asuka's score on the exam. After all, Asuka had graduated from a university already. It was silly to think otherwise.

And, thanks to having a good rest that night, his synchro test the next day was almost perfect.

"Shinji you're amazing! You've got the top score!" Misato told him.

"Whatever. I still beat you on the school exam, you know," Asuka groused to Shinji.

"That's great for you, Asuka," Shinji replied with a sly smile.

Shinji's school test score may not have been great, but there was something satisfying about beating Asuka on a test that really mattered.

(MP increased by 1)

■ Rei's results

1. Studying for an exam...

● If successful

For Rei, studying at night was normal. Of course, most schoolwork was useless in her duties as an EVA pilot, but she was just doing what she was told.

Rei's performance record was not bad. If she just followed her usual routine, her grades would be acceptable.

However, because Misato had said something, Rei decided that this time she would study a little bit more. Thanks to that, her results on the exam was better than ever.

"Ayanami, isn't it great? You scored better than anyone else!" Shinji's voice was filled with admiration at Rei's achievement.

"It was nothing," Rei said. She was not sure if this was what it was like to feel happy for being praised, but her numbers during her synchro test later that day were better than ever before.

(Friendship with Shinji and MP limit increased by 1)

● If it fails

For Rei, studying at night was normal. Of course, most schoolwork was useless in her duties as an EVA pilot, but she was just doing what she was told.

Rei's performance record was not bad. If she just followed her usual routine, her grades would be acceptable.

However, because of all the recent changes in her life, her rhythm was thrown off and she couldn't concentrate. Thanks to that, her score on the exam dropped significantly.

"Even honor students fail sometimes, right?" Asuka taunted her afterwards.

"Asuka, don't be mean. I'm sorry about the test, Rei," Shinji said.

"Thank you, Ikari-kun," Rei replied. But even Shinji's comforting words could not fill the hollowness she felt inside at her failure, and that feeling carried over into the results of her synchro test.

"Rei. I know studying is important, but you can't let it get in the way of your duties as a pilot," Misato said, trying to be kind in her criticism.

“Understood,” Rei said with no hint of emotion in her voice.
(MP upper limit value is decreased by 1)

2. The exam is unimportant. EVA is all that matters

Rei’s performance on school exams had always been satisfactory. She had studied already and never really talked about it.

Of course, she studied a little as usual, but that night she went to bed early. She knew that the synchronization tests were more important than any school exam.

However...

"Rei's sync ratio hasn't risen at all," Misato noted, glancing at the synch rate which had not changed.

It wasn't bad, but it still seemed a bit unsatisfactory compared to those of Shinji and Asuka.

"Hmm... can you try harder, Rei?"

"Yes," Rei replied.

However, Misato knew that it would not happen immediately, just as she knew Rei had not improved on her school examination either.

The results were unspectacularly normal.

(No changing parameters)

■Asuka’s results

1. I'm afraid I'm going out of the way, but just in case...

● If successful

"That Shinji is driving me crazy," Asuka said, cramming for the exam before she had reached the point of exhaustion. Of course, she knew that Shinji could never beat her when it came to

studying. However, Asuka had underestimated Shinji before, like when he piloted the EVA. She wasn't taking any chances.

"I can't lose," Asuka said to herself anxiously, heading to her desk. It wasn't the subject of the test she needed to study, but the Kanji related to it. This was because in Asuka's case, most of the time, she lost points because she could not read the text of the question, not because she didn't know the answer.

Her studying was successful and her score was almost perfect on the exam. Of course, for someone with the academic ability to graduate from a university, that was to be expected.

"What's the matter, Shinji-kun? Didn't you get a better score than me?" Asuka teased.

"Come on, Asuka. There's no way I can beat you. You graduated from college already."

Asuka who was feeling good about beating Shinji had a synchro rate that far surpassed his as well during that day's synchro test.

"Hah! It's just because I'm the best!"

(Raise MP limit by 1 and 1 card up)

● **If it fails**

"That Shinji is driving me crazy," Asuka said, cramming for the exam before she had reached the point of exhaustion. Of course, she knew that Shinji could never beat her when it came to studying. However, Asuka had underestimated Shinji before, like when he piloted the EVA.

"I don't know... but maybe he'll do it," Asuka mumbled to herself. Usually, Asuka only studied a little for any school exam. It was

only a junior high school, after all, and she'd already graduated college. But cramming was something she usually did.

"Ugh! I wonder if I'm getting sick or something this time." She felt like she had a cold because she wasn't used to staying up so late.

"Asuka, are you okay?" Shinji asked nervously.

"Stop making so much noise!" Asuka shot back.

"Perhaps you need to practice more self-discipline," Rei said.

"Shut up! Shut up! Shut up! Leave me alone!"

Feeling as sick as she did, it was no surprise her synchro test suffered. Asuka had her worst synch rate ever that day.

(Friendship with Shinji and MP upper limit decreased by 1)

2 Piloting an EVA is more important than studying

"Ah, studying's stupid, and I'll just go to bed." Asuka felt it was a waste for her to study at junior high school level. The only real challenge she faced was the Kanji used in the questions, but she was confident she'd manage. She'd already lived for several months in Japan.

"Synchronizations tests are many times more important than school tests," Asuka reassured herself, and just as predicted, she had the highest synchro rate in the synch test the next day.

"So, Misato. I beat that idiot Shinji, right?" Asuka asked, very proud of herself.

Because of her good synchro test, Asuka went into her school exam feeling confident and powerful.

"After all, my inherent power is self-evident!"

The results put Asuka's name at the top of the school's honor roll.

(No change in parameters)

Event 7 “After-school test”

■ What Happens

"Hey, what's going on?! What's this doing here?" Asuka's voice echoed throughout the EVA Cage. The EVA Cage was where the EVA's were kept between missions. It was located in the center of NERV Headquarters deep within the Geofront and was one of its most important facilities in NERV.

What she was pointing at was one of the Eva's special pieces of equipment, a heat-resistant, pressure-resistant and nuclear protective suit. Its rugged utilitarian design was far from refined and reminiscent of ancient diving suits.

"That's a D-type suit," observed Rei.

Shinji nodded. "The EVAs need to be ready with special equipment for battles in all sorts of environments."

"I know what it is!" Asuka spat at Shinji and Rei's explanation. "What's it doing here?"

Clearly Asuka knew what the suit was. It was none other than Asuka herself who had used it in the capture operation of the Eight Angel. The D-type suit had been wrecked in the battle at the time, and its restoration was almost complete. Perhaps it had been repaired or rebuilt entirely.

"If it's here...I've got a bad feeling," Asuka murmured making a sour face and crossing her arms.

When they had entered headquarters that day after school for their scheduled synchro test, the three had suddenly been summoned to the cage while they were still in their school uniforms. They weren't sure, but there was definitely something unusual going on.

"Thank you for coming so quickly. I know this was unexpected." The EVA pilots who had been quietly standing by, heard the words spoken from behind them. Turning around, they saw Ritsuko, in a white coat, rapidly approaching with a file in one hand.

"Ritsuko-san, why were we called down here today...?"

"For testing the D-type equipment, of course," Ritsuko said, nodding to Shinji's question with strong affirmation.

Asuka turned away in a moody manner and spit out without saying "Damnit!".

Ignoring her, Ritsuko continued. "I've been repairing it here and there using the data we got from the battle with the Eighth Angel. It's still in the adjustment stage, but I'm about to test it equipped on an EVA so I asked for you guys to come."

"Test... what are we supposed to do?"

"For the time being, I'm only going to equip part of it and have you move around a little."

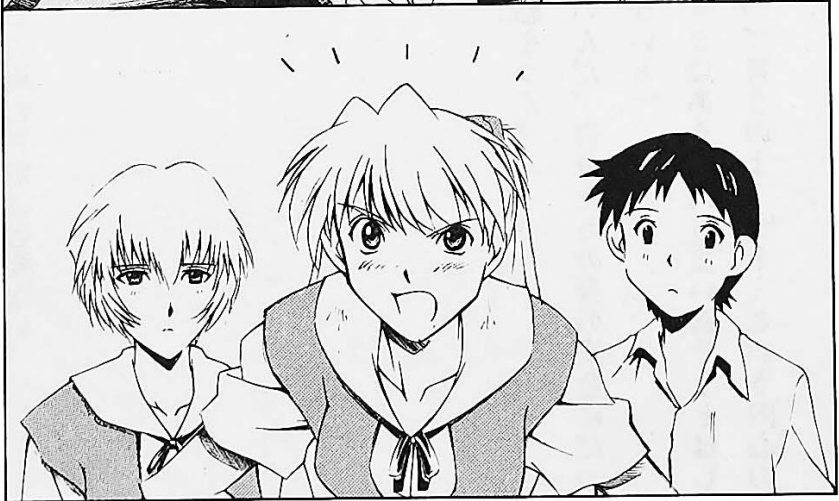
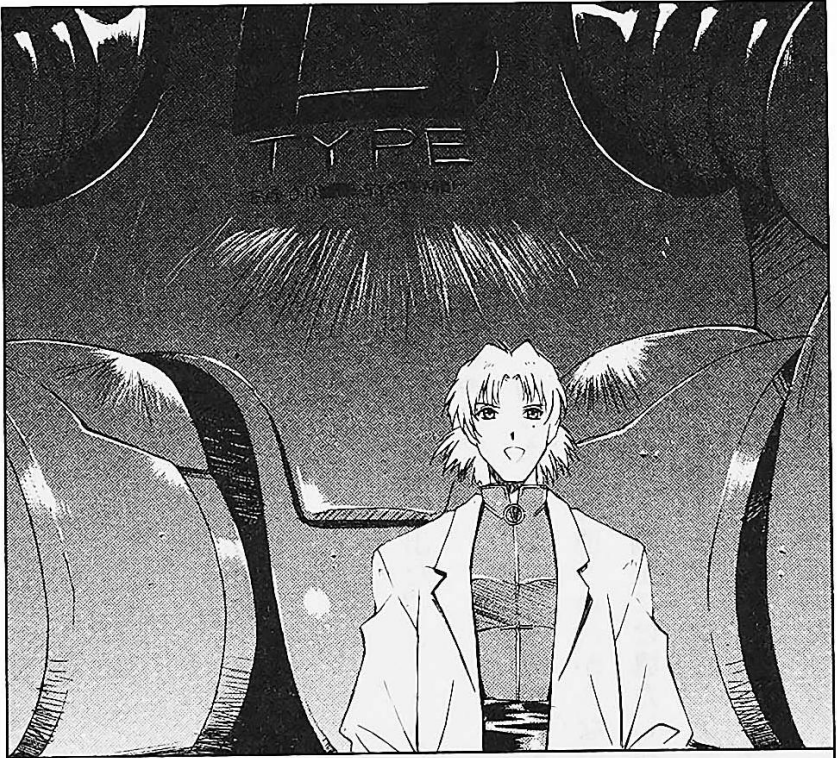
"Isn't the special equipment incompatible with Unit 00?"

"We took that into account during the refurbishment. It's compatible with all the Units."

"I've never heard of doing such a test today. Who do you think you're going to get to do it?" Asuka prodded.

Ritsuko smiled patiently at the question and looked at Shinji Rei and Asuka. "I have a lot of questions... I'll admit I didn't plan to do it today, but I was going to test it in the near future anyway. I'd like to know if any of you would like to volunteer?"

Ritsuko looked at the three of them expectantly.



■ Choices

1. Volunteer for the test.

- Shinji and Rei use <Mental> = target value 14, but Asuka uses <Calmness> = target value 14

2. Wait to see what happens.

- No die roll is necessary.

■ Shinji's results

1. "I wonder if I should do it?"

- If successful

"I'll do it," Shinji said, stepping forward.

"Hmm, what an obedient lap dog," Asuka cursed under her breath, looking at him.

Ritsuko didn't seem concerned. "I don't know when we'll use the D-type equipment again. This is mostly for your safety, so you can get used to it."

Asuka didn't dare say anything back, but the look she shot at Shinji was stronger than words.

"Okay, we'll equip Unit 01 with protective gear. Shinji-kun, you should change into a D-type plug suit."

"A D-type plug suit?" Shinji's expression changed completely as Ritsuko issued the instruction while writing something in her file. Apparently, he had forgotten about the heat-resistant plug suit, which looked like a balloon and was awkward to wear.

"Please cooperate, Shinji. It's for your own protection."

Asuka, who had a wicked smile on her face, knew she would be able to tease him mercilessly now. Shinji dropped his shoulders with a defeated look and headed for the locker room to change.

(Upper limit of MP increased by 1)

● **If it fails**

"I....." At the moment he began to speak, Rei raised her hand and stepped forward.

"I'll do it."

Shinji's hand, halfway up, just stayed there, limply.

"Well, well, honor student. Do you have something to prove?"

"Stop it Asuka. That's not a nice thing to say," Shinji said, cutting Asuka off.

"What? Does little Shinji have something to add?!"

"That's enough," Ritsuko broke in, holding up her file between Shinji and Asuka the file to block them from starting a fight.

"But..." Shinji and Asuka said at the same time, eager to continue their argument. However, Ritsuko was not going to allow that.

"Both of you can cooperate join the test if you feel so enthusiastic. Everybody go change into a D type heat resistant plug suit now. That's an order."

"What!?" Again, they both raised their voices in dissatisfaction at the same time. The two looked at each other awkwardly, but they knew it would do no good continuing, and the next moment, they turned away from each other and headed to suit up.

(One more friendship with Asuka)

2. Let's take a look at the situation

"Shinji should do it," Asuka said.

"Why should I do it? Why don't you go do it, Asuka?" Although Shinji hadn't volunteered because of his passive nature, he wasn't

exactly eager to volunteer for the test either. But Asuka's words made Shinji harden his resolve. If he caved in, it would seem as if Asuka had forced him to do it.

"I will never do it," Shinji asserted forcefully, which was a rare thing for him.

"Fine... well then, I think I will do it."

"I will do it too."

Asuka and Rei both raised their hands and stepped forward.

"Then Shinji-kun will just do a normal synchro test. You two come with me..."

"Wait, wait, Ritsuko-san!" Shinji hurriedly stopped Ritsuko, who was about to leave with Rei and Asuka.

"Uh... can I participate in the D-type equipment test after all?"

I thought you said you'd never do it?" Asuka ginned at him with a mischievous laugh.

(Gain one card)

■ Rei's results

1. "I'll do it"

● If successful

"I'll do it." With those words, Rei stepped forward.

"Then we'll equip Unit 00 with protective gear. Rei, change into the D-type plug suit," Ritsuko said.

"Yes," replied Rei.

Asuka's eyes shone as she looked between Ritsuko and Rei. She grabbed Shinji's arm and pulled him in to quietly, whisper.

"Won't it be interesting to see the honor student's new look in the heat-resistant plug suit?"

"That's not fair to Ayanami," Shinji said to Asuka, glancing anxiously at Rei.

"Who cares? Whether she hates me or likes me, she'll still look ridiculous."

"Why should that matter?" Rei asked Asuka with a cold voice, wearing an inscrutable expression.

The cooling gas filled Rei's suit which inflated like a huge balloon, but she did not lose her calm attitude. The strange look created by the outfit wasn't the comedic thing that Asuka had hoped. (Upper MP limit and card number both increase by 1)

● **If it fails**

"I'll do it."

"Wait a minute! I'll do it." Asuka pushed past Rei and raised her hand. "This D-type equipment has been upgraded based on the data from when I fought in it before, right? If so, it should be easier for me to compare the difference from before the repair by testing the new version with Unit 02."

Asuka's burning eyes fixed on Rei as if expecting an argument.

But Rei ignored her look and turned to Ritsuko. "Is that correct?"

"Obviously, it's best to use Unit 02 in terms of comparing before and after renovation." As Ritsuko answered, Asuka put her hands on her hips, and stuck u=out her chest. She had won.

"Then it's decided. I'll do the test with my Unit 02."

"Ayanami..." Shinji was concerned for Rei and his voice was gentle. However, it was impossible to read any emotions from Rei's face, which was blank and did not express emotions.

(No change in parameters)

2. What kind of reaction do the two people have?

Normally, Rei would be the first to volunteer, but not today.

Perhaps because of that, Shinji and Asuka kept silent.

"Nobody? Asuka, Shinji, not even Rei?" Ritsuko asked in a disappointed tone. She put her hand to her forehead and closed her eyes as if she had a sudden headache. "Alright. If you don't want to test the EVA, I can't force you. But I can still order you to put on the D type plug suit. Everyone suit up!"

Asuka wanted to protest, but she saw the dangerous look in Ritsuko's eyes and wisely chose not to speak. Of course, Shinji and Rei couldn't go against Ritsuko's orders.

A few minutes later all three of them were in their heat-resistant plug suits that bulged like balloons lined up in front of Ritsuko. They looked strange.

"I have something to ask you, the Eva pilots..." Ritsuko said, looking at them, but then stopped.

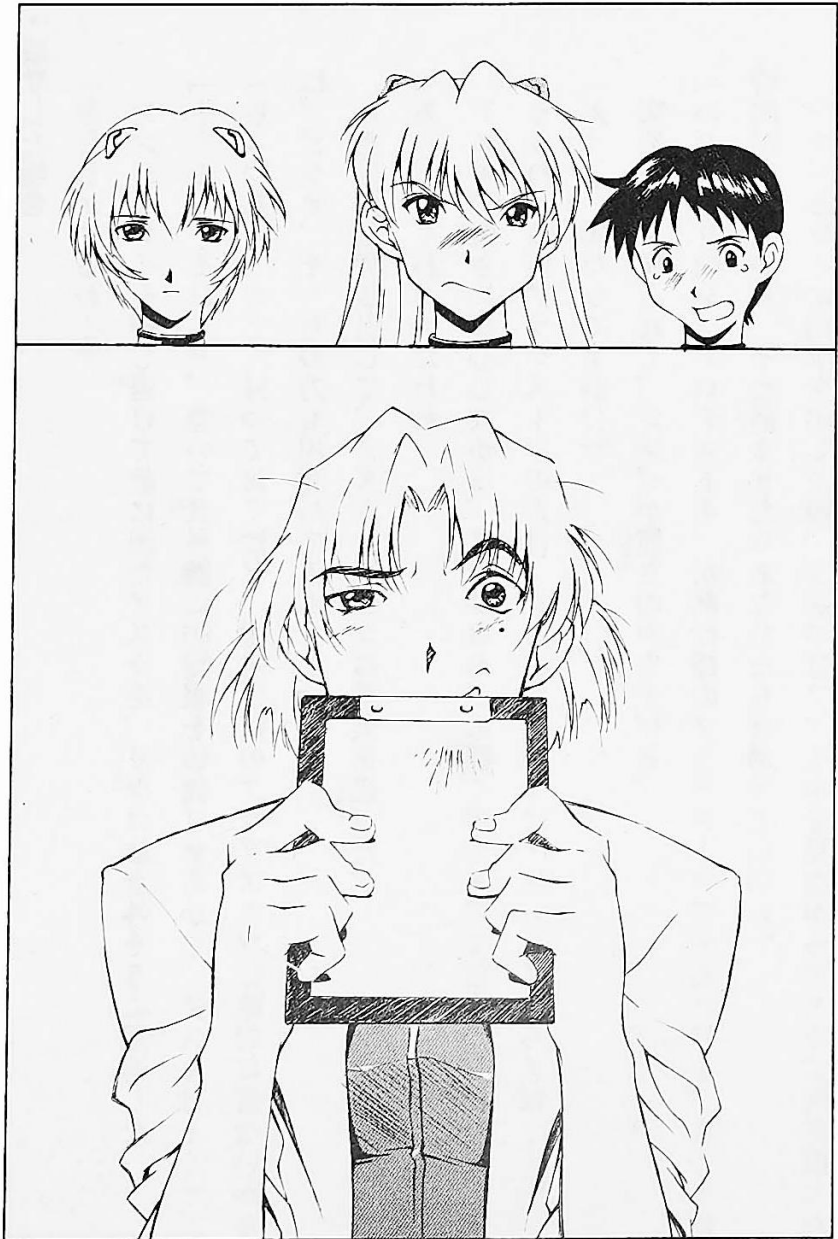
Rei sensed the unnatural silence and raised her face. For some reason Ritsuko's mouth was twitching.

And the next moment... Ritsuko suddenly covering her face with her file.

"Ha, ha, ha."

It took the three of them a few seconds to realize that the strange noise she was making was desperate laughter. And when they knew it, there was nothing they could do but stand there in awkward embarrassment.

(No change in parameters)



■ **Asuka's results**

1. **"I have a reputation to maintain"**

● **If successful**

"I'll do it!"

Ritsuko looked up in surprise at Asuka as she pushed out in front of Shinji and Rei.

"Alright. Let's get Unit 02 ready for the test. Asuka, go suit up in the special heat resistant suit."

"Wait a minute! I'm fine with testing Unit 02 in that stupid thing. But I've already tested the heat-resistant plug suit. But they've never tried one on," Asuka said, pointing at Rei and Shinji.

"You know, you have a good point," Ritsuko said, admiring Asuka's sharpness.

Ritsuko put her hand lightly on her chin and thought for a moment. "I think Shinji and Rei could use a little experience in the D type plug suits..."

"What? Us?!" Shinji exclaimed.

"It's just like taking a regular synch test, only wearing the heat resistant suit. It'll take a little time, but after that you can go home," Ritsuko said, consulting her file.

"Now, Asuka. For the time being, we'll just test the D type equipment on Unit 02."

"Perfect!" Asuka replied, grinning at Shinji and Rei who were both regretting not volunteering before her.

(Gain one card)

● **If it fails**

"I'll..." Asuka began to say.

"I'll do it," Shinji said just a moment before Asuka was able to volunteer.

"I... I'm sorry, Asuka," Shinji stammered. "Did you want to do it?"

"Don't be stupid! I'll never put that D-type equipment on my poor Unit 02 again!"

"Are you sure, Asuka?" Ritsuko said. "If the two of you work together on the test, the better it will go."

"I'm not saying I won't do it. I'm just saying I think Shinji should go first."

"If so, I will also be tested," Rei said raising her hand.

"Alright. Then Asuka can go home after completing the normal synchro test. Shinji and Rei should wait here."

"....."

Feeling suddenly excluded, Asuka regretted her decision. She knew that it was her own fault, but still, her pride was hurt. Maybe she wasn't as mature as she pretended.

(Friendship with both Shinji and Rei's friendship is decreased by 1)

2. I changed my mind

"I'll do it," said Shinji.

"I will do it." Rei said at the same instant.

Ritsuko looked at the two of them with an amused expression.

Her eyes moved from one to the other until they landed on Asuka.

Shinji and Rei looked back at her as well.

"I'm not sure I want to wear that thing again," Asuka said, uncomfortable but still reluctant.

After seeing the situation, and after pausing for a while, Ritsuko sighed.

"Alright. Fine. Then it will only be Rei and Shinji."

"Wait, I'll do it!" Asuka succumbed to the pressure and agreed. "I was the one who used it before the modifications. I'll be the one to judge how they turned out."

Asuka's new enthusiasm was accompanied by her usual complaints. But Ritsuko wasn't all that concerned and she nodded again with satisfaction.

(Upper limit of MP increased by 1)

"Event 8. "The Incident"

■ What Happens

Settlement

The three pilots were called to NERV headquarters that afternoon. The reason was that Ritsuko wanted to perform a second mutual EVA compatibility test. It would judge the synchro rates between Shinji and Unit 00, which had run berserk during the previous test, and Asuka and Unit 01 to look for any personality conflicts. Additionally, she planned to carry out a synchro test between Rei and Unit 02.

"System startup. Begin the operation."

"Main power connection"

"Bringing the operating voltage to critical point."

The voices of the technical team called out to each other for mutual confirmation.

"System startup complete. Move to the second stage"

"Initializing pilot contact."

"Synapse insertion, initiate link."

"Pulse transmission nominal."

"All circuits are normal."

There was no abnormality in any of the circuits, and the monitors came up green one after another, indicating normal connections for all three pilots.

Maya, glancing at a monitor for a moment thought she saw something. When she looked at the monitor again, it was back to normal. Still, she had a lingering doubt.

Any doubt she had vanished as she heard Ritsuko's voice.

"There it is again!!"

Identification pattern Blue. All the monitors suddenly changed and the alarms started blaring.

"Experiment canceled! Eject the plugs! Saving the pilot's lives is the top priority!" Misato shouted.

However, by the time the order was echoed by the technicians, the problem had already vanished and the system had settled back into normality.

Ten minutes later, the three pilots found themselves in the waiting room.

"My head hurts," groused Asuka.

"I have a headache, too," Shinji concurred.

"Why do I have a headache at this time?" Rei wondered without emotion.

Each pilot felt there was something peculiar about this particular headache.

■ Choices

1. Silently wait for the next instruction.
 - <Mental> = target value for Shinji is 13, Rei is 14, Asuka is 17.
2. Report the symptoms to the people around you.
 - No die roll required

■ Shinji's Results

1. **"I'm a little sick, but even so I can wait for the next instruction"**

● If successful

"Are you okay, Shinji? You look pale," Asuka asked.

"Yeah... are you okay?" Shinji replied. Asuka looked even paler than he did, but he didn't have the energy to fight about it.

Waiting for the next instruction was all Shinji could do.

He knew it was important not to let the headache force him to run away. As he thought about it, he felt his head feel better. At least he felt well enough to look around the room. But when he looked around, all he saw were Rei and Asuka's gloomy faces.

"Everyone... are you okay?" Rei and Asuka's silent expressions answered his question. It was obvious to Shinji that none of them were okay.

...Silence.

The moment of waiting for the next instruction felt infinite. He didn't know why, but suddenly he felt in as much pain as the others looked.

Suddenly the door of the waiting room opened and Misato poked her face in.

"You all should go home because evaluating the test is going to take a long time," Misato said. Hearing her say that, the three looked back at her with obvious relief.

(No change in parameters)

● **If it fails**

"What's happening, Shinji? You look so pale." Asuka, the person who had called out to Shinji, also had a pained look, but Shinji couldn't afford to worry about that. Between the headache and the nausea, Shinji didn't have the energy to answer.

"Hey Shinji, please say something." Asuka's squeezed voice called out again, but Shinji couldn't answer and just remained silent.

"Everyone looks ill," Rei said. Shinji heard her and knew he was not the only one who was suffering. He tried to do his best. But as soon as he tried to get up, he fell over and lost consciousness. The last thing he remembered was being in the waiting room. "What happened?"

Only silence answered his question. Shinji, who had felt sick in the waiting room had collapsed. Misato had found him and taken him to the hospital. The cause was unknown, but not long after he felt better.

(No change in parameters)

2. No, I can't do anything if my head hurts so much

Shinji's head was splitting. He had felt no pain when he was in the EVA. He hadn't felt anything while he was getting out of the entry plug. Even so... Now his head hurt so much.

"Asuka...? Ayanami?" He blurted out their names. But no reply came. One look at their pained expressions told him they were suffering too.

"I can't do another experiment like this... I'll tell someone..."

Breathing hard, he started to leave the waiting room. As soon as the door opened, he saw Misato's face. She had come to tell them the tests were done for the day. With the tension suddenly relieved, Shinji felt the world spin.

"Shinji-kun!" Misato's voice surprised him. He remembered that he needed to tell her how ill the others were.

Shinji lost consciousness.

Where am I?

The next thing he knew, he was waking up in the hospital at NERV. He, Ayanami, and Asuka were lying in three beds lined up in the room. It took him a moment to realize where he was.

I must have fainted...

(No change in parameters)

■ Rei's results

1. I have to wait for the next instruction...

● If successful

Silence.

Normally, the pilot waiting room was filled with Shinji and Asuka's quarrels. But at the moment it was silent. Neither of them was in the mood to talk.

Rei heard the sound of footsteps. Clack, clack, clack...

Someone was passing by in the corridor. The sound gradually became louder and then softer and softer...

Silence again.

"Hey, Shinji and First, do something about this headache!" Asuka screamed with all her might.

"What?" Shinji asked.

"What the hell do you mean "What?" I'm telling you my head is killing me!"

"So is mine" Rei replied.

"Hey, Asuka. You know if you get so angry, all the time it ages you..." Shinji had barely finished speaking when Asuka's iron fist knocked him to the floor.

“At least the First isn’t laughing at me!” Asuka’s sudden explosion seemed to relieve some of the tension in the room and Rei noticed that her headache was getting better.

(One more friendship with Asuka)

● **If it fails**

"....."

"Why do I have such a terrible headache!" Asuka, who could not bear even anormal headache, finally couldn't bear it any longer. Shinji was sitting at the edge of the room holding his head.

"Do you guys have headaches too? Hey, tell me, Shinji you idiot! First too!!"

"Stop talking... Why do you think I care about your headache?" Shinji who was squeezing his head to block out Asuka's uproar wasn't any better than she was.

Gradually Rei's headaches began to fade.

"Perhaps it's just a head cold," she said as she left the waiting room, leaving behind Shinji and Asuka. Even though she knew she was disobeying orders by doing so, she couldn't stay there any longer.

(No change in parameters)

2. This is not normal, you should tell someone

In the waiting room, Shinji and Asuka both had terrible headaches. The experiment had been stopped due to an emergency and Rei realized something unusual was happening. The "identification pattern Blue" code that came out during the test, and the headache that was getting steadily worse after

walking away from the EVA told her she needed to do something. But it was difficult to think clearly due to the headache. Rei wanted to talk to the other two pilots.

"Hey, Shinji you idiot. Answer!" Asuka shouted.

"My head hurts, keep quiet," Shinji replied.

Rei knew she could not count on the other two.

The next thing she knew, Rei was unconsciously walking out of the waiting room. She went straight to the commander of NERV, Gendou Ikari.

"I have to tell you something," she began, the words pouring out of her unconsciously.

(Mark check 2)

■ Asuka's results

1. "I must wait for the next instruction"

● If successful

Silence dominated the pilot waiting room. The three people looked down with ashen faces. Asuka was the first person to raise her head.

"Oh, I can't wait much longer because of this stupid headache.

Hey, are you listening!"

"I'm listening, just don't be so noisy," begged Shinji.

"I can hear you." Rei assured her.

Satisfied for the moment that the other two had heard her, Asuka continued.

"If I don't do something for this headache soon, it's just going to get worse. Do you have any ideas?"

"About what, Asuka?" Shinji asked.

"What do you think? What do you guys do when you have a headache?"

"Sleep," Shinji suggested absently.

"Pain medication and sleep," Rei said. Even she was looking moody.

"Are you guys stupid?! I can't sleep while waiting for our orders!"

"Sure you can sleep."

"There is nothing wrong with taking a nap," Rei assured her, agreeing with Shinji.

Oh, sure. It's okay for the two of you to take a nap, but I have standards to live up to!"

For a moment, Asuka had managed to forget about how much her head was hurting as she focused her anger on Shinji and Rei.

(No change in parameters)

● **If it fails**

The waiting room was dominated by silence. The usually argumentative Shinji and Asuka were even quiet because they didn't feel up to talking to each other much less fighting. It's like that when you have a really bad headache.

Even so, Asuka felt like she had to do something. She didn't feel like standing up or talking, so she tried sitting down. She landed heavily with a sigh.

"Are you okay?" Shinji asked Asuka. "You don't look so good."

Asuka thought so too, but what came out of her mouth on the contrary was a quick rebuff.

"I must have eaten something too spicy. I need to go outside and cool my head." She knew that going out into the hallway wasn't

going to improve things, but she needed a change of atmosphere, and the only thing she wanted to do at that moment was get out of the waiting room.

As she stood up, the world began to spin.

"Asuka!"

Idiot Shinji, she heard herself think, though she couldn't find the strength to say it out loud. Before she could think of anything else to say, Asuka's consciousness slipped into darkness.

Where am I?

She woke up on the bed in a hospital room. The experiment had ended, and it was a few hours later. She was informed that Shinji and Rei had returned home.

Asuka lay on the bed alone, staring at the ceiling.

"I can't believe they just went home..."

For some reason, tears fell from Asuka's eyes.

(Friendship between Asuka and both Shinji and Rei decreases by 1, and MP limit down by 1)

2. "I'm in trouble. It's better to tell someone"

"Hey! Shinji you idiot, are you listening?" Asuka asked. She was getting worried that their headaches would only get worse as time went by. "I'm going to tell Misato. If anyone comes in here in the meantime, tell them I went to look for her."

"All right."

"First, are you okay with that too?"

".. ." Rei's silence seemed to imply she was in agreement. Asuka interpreted it that way anyhow, and left the waiting room by

herself. She wondered though if she was going to make it all the way to the elevator without falling over.

Asuka told herself that since both Shinji and Rei had headaches and couldn't move, it was up to her.

If Shinji had heard her say that, he probably would have argued, but the truth was Asuka was the only one who could still move.

She was the leader. Only that emotion carried Asuka.

When she reached the elevator door, it suddenly opened.

"Oh? Asuka, what?" Misato asked as she came out. She had come to tell them that the experiment was over and they should go home.

Asuka had never imagined that the few meters from the waiting room to the elevator could seem so far or that Misato could be such a dependable person.

(No change in parameters)

Event 9 “Today I glimpsed a piece of it”

■ What Happens

"Let's get started!" Ritsuko's voice reached the three pilots in their EVAs over the intercom. NERV headquarters was in the middle of yet another of what seemed to have become a constant parade of synchro tests.

Synchro-test: An experiment to measure the compatibility between an EVA and a pilot. It was a way to look deep inside the pilot's mind.

Several days had passed since the initial "identification pattern blue". The identification pattern was still blue, suggesting that deep inside one of the pilots, something was lurking and growing. Suddenly a single thought emerged from the pattern, converted into a word and exploded deep in the heart of one of the pilots.

"Destroy!"

Thump-thump!

An unthinkable thought came into the pilot's mind.

Thump-thump!

It grew violently into something that could not be ignored.

"Destroy everything!"

It resonated inside the pilot's heart again.

"I'm picking up disturbances in the brain waves!" Maya shouted.

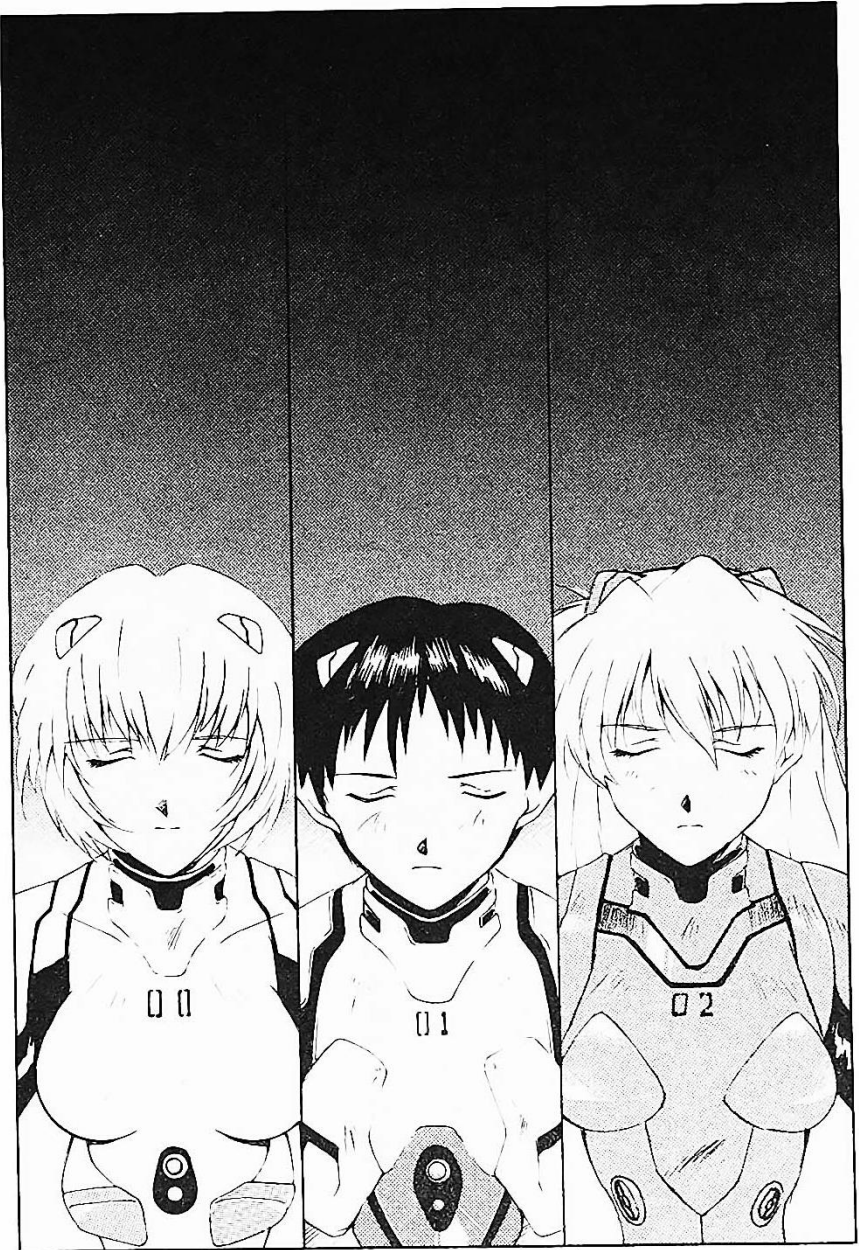
Ritsuko leaned over her chair to check the screen for herself.

"What's the cause?"

"Unknown."

Hearing the exchange between Maya and Ritsuko, Misato grabbed the microphone and called out to the pilot being tested.

"Your brain waves are erratic. What's going on in there?"



■ Choices

1. Suppress the violent emotions.

- <Mental> = Target value is 13 for Shinji, 14 for Rei and 17 for Asuka

2. Report your abnormality to the people outside

- No die roll required

■ Shinji' results

1. "What is this feeling?"

- If successful

Shinji felt a strong wave of emotions welling up deep inside himself. They boiled down to one word.

"Destroy!" Shinji felt his heart race, but he quickly acted to suppress the urge.

I don't want to do that! Shinji thought, facing head-on the temptation to give in and use all of his power.

And the voice suddenly faded.

"Shinji-kun, Shinji-kun?!"

"Ah... Misato-san!" Shinji saw Misato's face on the monitor in front of him. "What happened?"

"What's wrong? I've been calling you and calling you! Well, it's okay. The test is over, thank goodness."

"Yes," Shinji agreed, but he was uncertain. The test might have been over, but the situation wasn't.

"Shinji-kun, did you sense anything strange?" Ritsuko asked Shinji as he got out of the EVA.

"I'm not sure," Shinji said, surprised. "But, yeah, maybe. Why?"

“Your synch rate just before the test ended was unimaginable,” Ritsuko explained. “I’ll need to do another inspection of you.”
(Mark check 3)

● **If it fails**

“Destroy!”

The desire to attack washed over Shinji. He felt his power to resist gradually weaken.

“Destruction, destruction, destruction, destruction, destruction, destruction, destruction, destruction...”

“Uhhhhhhhhh!” The EVA moved as Shinji screamed. He couldn’t see anything anymore. He could not hear anything. Within Shinji at that moment, the act of destroying was everything...

“What?” Shinji found himself in a hospital bed. It seems he had fainted and not even known it.

“So, you remember anything?” Ritsuko asked him. “I’ll need to do a thorough inspection of you.”

Shinji’s synch rate when the power is cut, was on the verge of becoming unthinkable. Ritsuko was going to investigate thoroughly in order to find out what had caused Shinji and the EVA to almost run berserk.

(No change in parameters)

2. “Stop the test. I’m feeling weird”

“Something’s wrong!” Shinji said as the strange emotions welled up inside him.

“Cancel the test! Immediately eject the three pilots!” Ritsuko yelled, stopping the test.

As Shinji exited the EVA, Misato called out to him.

"You'll be fine if you take a little break..."

The desire that had filled his heart had disappeared, but his heart was tired.

"But after you take a break, we'll need to put you through another inspection," Misato said. She was determined to discover what had caused his incredible synch rate just before the end of the test.

(Mark check 4)

■ Rei results

1. "What is this feeling?"

● If successful

"Destroy!"

Rei silently bore the full weight of the urge that welled up within her. But another desire was born within her as well. The desire to suppress this alien urge.

It was a furious internal battle.

And Rei won it.

"Rei, can you hear me?" Misato's voice called to her. "The test is over. We'll have you out in a minute."

"Understood.

As Rei exited her EVA Misato met her.

"Rei, you just had an incredible sync rate between you and the EVA. I'll have to evaluate it, but great job."

There was no reason to keep Rei from piloting the EVA.

(Mark check 3)

● **If it fails**

"Destroy"

Rei believed if she could just endure it, she could get through it.

"Destroy, destroy, destroy, destroy..."

"...Building"

The word was leaked from Rei's mouth.

"Rei.....?"

Rei heard Misato's anxious voice. But now, she was not interested in anything but satisfying the urge within her.

"Rei, fight it!"

On the monitor in front of Misato, Rei was maneuvering the EVA, whispering and muttering in a small voice.

".....?"

The next thing Rei knew she was on a bed. She must have fainted.

"You look okay," Misato said. She was standing right next to her.

"You're going to have to go through an inspection. You and the Eva went berserk. We need to find out what's going on with the unusual sync rate you had."

The clinical way Misato said it seemed to Rei as if she were covering up her true emotions.

(No change in parameters)

2. It's better to tell the people outside about the abnormality

"Something is wrong!"

Rei felt the word "destruction" being sent directly to her brain.

Ritsuko's voice was heard in the distance just as she thought she couldn't hold out any longer.

"Stop the test! Eject the pilots. Hurry!" The test was discontinued. That urge to destroy ended as soon as Rei exited the EVA.

"What happened?" Ritsuko asked. "Are you alright?"

"Yes," Rei replied obediently.

"Just before we stopped the test, your sync rate jumped to an abnormal level," Ritsuko explained, though Rei felt that must have been the case.

"Until we understand what happened, the inspections will continue."

(Mark check 4)

■ Asuka's results

1. "What is that noise?!"

● If successful

"Asuka, is something wrong?" Misato's voice asked.

"It's nothing!" Asuka yelled back.

Yes, it's nothing...

Asuka felt the desire for destruction rise within her, but by focusing on the EVA she was able to ignore the urge.

Eventually the voice disappeared.

"Asuka, the test is over. Thank you."

"Okay," Asuka answered simply, but her mind was racing and puzzled.

"Your synch rate was great," Misato said, greeting her as she exited the EVA. "But there was a numerical value that should never have happened normally."

"What does that mean?"

Misato continued with a sigh. "In a nutshell, it means another test."

"What?!"

The events of the previous day's inspections came to Asuka's mind.

"Did you experience anything strange we should know about?"

Misato asked without changing her expression.

"No. And I just don't see why I have to be tested!"

"I understand," Misato sympathized, but Asuka had no choice but to accept.

(Mark check 3)

● **If it fails**

"Nothing's wrong, shut up!" Asuka yelled at Misato. The next moment, she felt a desire well up inside her heart.

"Destroy, destroy, destroy!"

The urge to destroy filled her heart. She couldn't stop her feelings. She put her hands on the controls.

"Asuka, what are you going to do?"

Something was roaring.

"Shut up!"

She jerked back on the controls. The EVA started to move. And... Asuka woke up in the hospital bed. Apparently, she had fainted.

"Asuka, do you remember what you were trying to do?" Misato's voice asked her softly. The urge to destroy, which had filled her just a moment before, was gone.

"Just a little," Asuka said, weakly.

"Okay..." Misato looked Asuka straight in the eyes. "For the time being, we will have you inspected to investigate the cause of the runaway and the abnormally high synchronization rate we detected at that time."

Asuka didn't blame Misato. She knew an answer had to be found.
(No parameter change)

2. Hey, stop the test!

"I don't know what's going on!" Even as she yelled at Misato, Asuka felt an urge to destroy everything welling up within her.

"Do something, Misato!"

"Okay, stop the test, hurry!"

At the moment the EVA stopped functioning, her desire to destroy disappeared.

"Asuka!" Misato yelled, rushing up, but she stopped after seeing Asuka's blank face. "Did something happen?"

Asuka answered weakly. "I'm not sure. I had a weird thought in my head, but as soon as I exited the EVA, it completely disappeared. I can't quite remember what it was."

"A strange idea?" Misato asked, thinking hard and looking at Asuka. "Asuka, you should be inspected. That's an order."

Asuka didn't like the thought of being subjected to more tests, but it was better than the urge that had filled her.

(Mark check 4)

Event 10 “Growing Impulses”

■ What happens

“What’s going on with this measurement?” Maya asked, noticing a momentary increase in one of the pilot’s synch rates. It was a small fluctuation, but unusual.

Because the situation was unusual, a quick examination of the pilot’s mental and physical status was performed. For safety, a similar diagnostic was run on the other two pilots.

"Why is that happening?" Ritsuko’s voice sounded worried. But her thoughts were interrupted by Maya's voice.

"Sensei. The readings are strange!"

"What's wrong?"

A monitor showed the three pilots. The one with the abnormal synch rate seemed to be suffering.

"The brain wave pattern is changing," someone yelled.

“What's going on in there?” Of course, no one could know.

"Destroy!" The word echoed in the pilot’s mind.

"Why?" the pilot asked in response.

As if in answer the urge to destroy rose from the bottom of the pilot’s heart.

"Destroy!"

The impulse was even stronger this time than before.

The pilot desperately tried to suppress it, but the urge could not be suppressed.

"Destroy!"

"Why?"

The Child’s consciousness was gradually paralyzed by the images of destruction that arose one after another.



■ Choices

1. Have a solid awareness.

- Shinji and Rei use <Mental>, Asuka uses <Calmness> = Target value 15. If Check 3 has been marked, the target value is 12. If Check 4 has been marked, the target value is 14.

2. Let's look at the situation a little more closely.

- No die roll required

■ Shinji's results

1. Don't be washed away. Don't be washed away. Don't be washed away.....

- If successful

"Destroy"

Shinji did not want to let this impulse drive him away. He desperately tried to suppress the urge rising in his heart.

"Destroy"

He tried to think of other things by focusing his fading awareness. Then he felt the urge gradually fading. However, it did not completely disappear.

"Shinji!" Someone was shaking his body. "Shinji-kun!"

The voice restored a little of his consciousness.

"What's wrong, Shinji-kun, what happened?" Misato was looking at him anxiously.

"Mi, Misato-san. I'm not sure, but..." Shinji lost consciousness.

"Hey, Shinji" Ritsuko said, joining Misato who was staring at him with concern.

"It was Shinji-kun in whom we detected the pattern blue."

"What?" Misato could do nothing more at the moment than be surprised.

(Mark check 5)

● **If it fails**

"Destroy"

Shinji did not want to let this impulse drive him away. He desperately tried to suppress the urge rising in his heart.

However, his consciousness gradually weakened as the urge to destroy grew stronger.

Shinji hated the feeling. He did not want to destroy.

Please help someone. Asuka. Ayanami. Anyone. Please help me.

In his waning consciousness, he could hear someone speaking in the distance.

"Shinji. Wake up..."

"...the Identification Pattern Blue... it's in you..."

Those were the last words he heard in his vanishing consciousness.

(No parameters fluctuate)

2. What is this feeling?

An emotion welled up within Shinji. The emotion became a word.

"Destroy!"

Why should I destroy anything?

"Destroy!"

Why should I destroy anything?

However, there was no answer to that question. There was only the urge to destroy vying to control his mind.

"Destroy!"

The urge repeated endlessly.

"Please stop," Shinji cried out, desperate to resist the urge.

However, the impulse was so intent on controlling his mind that it ignored his pleas. His consciousness began to recede.

At that moment, pattern blue was detected in the control room at NERV headquarters.

"The source of the Pattern Blue has been identified... It's Shinji Ikari!"

(No parameters change)

■ Rei's results

1. Inner eye

● If successful

"Destroy!"

"Destroy!"

"That is not my desire," Rei heard herself say in response to the desire welling up within her.

By concentrating, the urge gradually diminished. However, the emotion did not entirely disappear from her heart. The impulse tried to control her mind every time her concentration waned. Meanwhile, in the control room, Rei could hear Ritsuko call to Misato.

"Misato. A reading just appeared. Pattern Blue has been detected. It's in Rei!"

"What do you mean? How can a Pattern Blue be coming from Rei?"

Am I Pattern Blue? Rei's inner voice asked.

Her consciousness, which she was focusing in order to suppress the urge that arose within her, was gradually fading.

(Mark check 5)

● **If it fails**

"Destroy"

Rei tried to resist the urge to be swept away by the emotions welling up deep inside her heart.

"Destroy, destroy, destroy!"

In the brief moments when her heart was under control, she could see two people in her mind.

... Command Ikari. And Ikari... is that you?

At that moment, a voice suddenly echoed in her heart. It was a voice she knew.

"What's happening to Ayanami?"

"Ikari...is that you?" Rei tried to say, but her mind was clouded.

"Was the pattern blue detected in Rei?" Misato's voice came to her.

"Ayanami is pattern blue? What do you mean?"

"Destroy!" The impulse rose from deep inside her.

She lost consciousness before the urge could fully sweep her away. The last thing she heard was Shinji's voice.

"Ah, Ayanami? Ayanami!" Then Shinji's voice no longer reached Rei and everything was silent.

(No parameters fluctuate)

2. Do you want to see the situation a little more?

"Destroy! Destroy!" The urge endlessly welled up within her. Rei tried desperately to endure it, but the impulse gradually dominated her mind.

She tried to suppress the urge, but could not stop it from rising up.

It would only be a matter of time before all of her mind was dominated.

Ikari.....Commander.....

Consciousness gradually receded before the urge could fully engulf her heart.

At that moment, pattern blue was detected in the control room at NERV headquarters.

"The source of the Pattern Blue has been identified... It's Rei Ayanami!"

(No parameters change)

■ Asuka's results

1. Hey, what do you think this will be like?

● If successful

"Destroy!" The word welled up inside Asuka.

"Destroy!"

Asuka's conscious mind focused to suppress the urge rising up inside her, but it did not completely vanish from her heart.

She could hear a voice in the distance.

"Asuka. What's going on, Asuka?" She heard Misato's voice.

"Misato. The readings coming in right now. It's pattern blue. It's coming from Asuka!" Ritsuko was yelling.

"What?" Misato asked.

What? Asuka thought to herself. Pattern blue is coming from inside me?

Asuka was growing weary from restraining the impulses raging inside her.

Her consciousness began to fade. Whatever was happening was not good. She needed to understand what it was. She needed to ask someone, but the voices of Misato and Ritsuko were already inaudible.

(Mark check 5)

● **If it fails**

"Destroy!"

I don't want to, Asuka thought to herself.

"Destroy!"

Stop saying that!

Asuka tried to control the urge by concentrating her consciousness, but the impulse kept gradually increasing

"Destroy!"

No!

For a moment she regained control of her heart and heard a familiar voice.

"Asuka. What's happening? Asuka!?"

The impulse subsided slightly. Asuka heard another voice, clearer. It was her own.

"Shinji, you idiot... First... somebody help me..."

Asuka felt faint again. Her voice was growing weaker.

In the control room, Ritsuko turned to Misato.

"Misato... We've detected the pattern blue. It's coming from Asuka!"

"What?!" Misato's words were the last thing Asuka heard before everything went silent.

(No parameters change)

2. I need to look a little more

"Destroy!"

What?

"Destroy!"

Why am I feeling this?

But there is no answer to that question - only the impulse of "destruction" trying to control her mind.

"Destroy!"

Do I want that?

"Destroy!"

She was slowly losing control of her own mind.

No! I don't want to destroy anything!

Asuka desperately tried to resist, but the rising impulse was dominating her mind.

No... no...

Her consciousness slipped away.

At that moment, pattern blue was detected in the control room at NERV headquarters.

"The source of the Pattern Blue has been identified... It's Asuka Souryu!"

(No parameters change)

■ "Last event. The Final Voice"

■ What Happens.

Directly beneath the NERV control room, the Angel was sealed in a lab behind several centimeters of ultra-hard glass. To be exact what was trapped there was the child whose identification pattern was "blue".

"The pilot doesn't seem to be waking up." Misato observed from the other side of the glass, looking at the child who had been asleep for a week.

There had been no change in readings, and no AT Field has been confirmed, but the identification pattern was still blue. It showed the existence of an Angel.

"What the hell is going on...?!" Misato hit the super hard glass. Misato was frustrated that even with the Angel right in front of her, she could do nothing.

Voices.

The voice of Shinji Ikari. "What is Eva to me?"

The voice of Rei Ayanami. "What is Eva to me?"

The voice of Asuka Langley Souryu. "What is Eva to me?"

In the eternal darkness, the three lonely voices echoed.

"Why do I pilot the EVA?"

"Why do I pilot the EVA?"

"Why do I pilot the EVA?"

Who is asking, who is asking, who is asking?

"Do I really want to protect this city?"

"Do I really want to protect this city?"

"Do you really want to protect this place?"

After those last words, there was a moment of silence. Suddenly it was broken.

"If you don't understand it, why don't you destroy it all?"

"If you don't understand it, why do you need it?"

"If you're not part of it, then you can get rid of it all!"

■ Choices

1. "This is not my will." Argue against the voice.

- Shinji and Rei use <Mental>, and Asuka uses <Calmness> = target value 16, but if check 5 is marked, the target value is 13.

2. "I'm already tired." Do what the voice says.

- No die roll required

■ Shinji's Results

1. This is not my will! I won't do it!

● If successful

"If you don't understand it, why don't you destroy it all?"

"If you don't understand it, why do you need it?"

"If you're not part of it, then you can get rid of it all!"

Asuka. Ayanami. And me. Is that what I really think, Shinji wondered.

"No! I'm here because I don't know!"

"Really?" Ayanami appeared in the darkness.

"Do you really mean that?" Asuka appeared as well.

But I'm not here, Shinji thought. *I am alone.*

"Haven't you always been alone?"

"No! That might have been the case at first... But now it's different!"

"So, why do you want to destroy everything?"

"Those aren't my thoughts!"

"That is not true. Because Ikari-kun, that is what you said."

Ayanami appeared next to him as she spoke.

"I thought I wanted to destroy it, but I didn't mean it."

"That's a lie... a lie, a lie! You want to destroy it!" Asuka appeared next to him as she spoke.

Shinji desperately tried to resist the words that penetrated deep into his heart.

"No. I don't want to destroy everything..." Shinji heard his own voice.

"That is irrational." Ayanami's voice.

"That's not what you said! You wished everything would disappear!" Asuka's voice.

"No! I...I...!" At the same time as he screamed, Shinji saw the ceiling of the hospital room.

"Shinji-kun's awake!"

"Identification check! Hurry up!"

Maya's fingers moved rapidly across her keyboard in response.

"The pattern is red! Shinji's alright!"

"...Shinji-kun!" Shinji heard Misato's word.

"What happened?" Shinji asked, but for the time being all he knew was Misato-san was crying and hugging him.

Shinji could only wonder why.

(Mark check 6)

● **If it fails**

"If you don't understand it, why don't you destroy it all?"

"If you don't understand it, why do you need it?"

"If you're not part of it, then you can get rid of it all!"

Asuka. Ayanami. Do we all think that?

"No! I'm here because I don't think that!"

"Really?"

"Do you really mean that?"

Ayanami and Asuka appeared before him.

"So why did you refuse to pilot the EVA?" Rei asked.

"Why did you keep running away? Asuka demanded.

"That was then! I don't want that anymore" Shinji tried to explain.

"It's an excuse, no matter what you say. It's the same as running away."

"That's what you always do - run away!"

The voices continued.

"In the end, you just want to throw everything away and escape."

"Ikari-kun. You don't need this place, right?"

"Idiot-Shinji! If you don't need it, why don't you disappear!"

Shinji desperately tried to resist the ghostly voices.

"No...no, no, no! I don't want to run away!!"

The moment the thought entered his mind, his eyes reflected the ceiling of the hospital room.

"Shinji-kun is awake! Normal EEG!"

"Hurry-up identification check!"

Maya quickly flew across the keys at her console.

"Identification completed... Pattern blue!" Maya reported.

At the same moment, Shinji awoke and turned his empty eyes toward Misato.

"Shinji-kun..."

Somehow, it seemed that his head had cleared.

"Ah? Misato, why are you so sad?" Shinji asked. He felt all right for the moment.

(No parameter change)

2. How is it? I don't know anymore

"If you don't understand it, why don't you destroy it all?"

"If you don't understand it, why do you need it?"

"If you're not part of it, then you can get rid of it all!"

That's right. If I destroy everything, I don't have to pilot the Eva anymore.

If I destroy everything, no one can scold me.

If I destroy everything, everything will leave me alone...

At that moment, the ceiling of the hospital room was reflected in Shinji's eyes.

"Shinji-kun's awake! His brain waves are normal! I'm not picking up any mental pollution!"

"Identification check! Hurry!" At Misato's command, the room suddenly becomes busy.

"Check done! The pattern is blue!"

Shinji saw Misato's face.

Why do you have such a sad face, Misato-san? Is it because I'll be gone soon, and you're lonely?

Don't worry. Everyone will be together soon...

(Mark check 7)

■ Rei's results

1. "Get out. You do not belong here."

● **If successful**

Rei heard Asuka and Shinji's voices echo in her head.

"If you don't understand it, why don't you destroy it all?"

"If you don't understand it, why do you need it?"

"If you're not part of it, then you can get rid of it all!"

Rei knew something was wrong. These were not her thoughts.

"Brightness."

Asuka's voice: "It doesn't make a difference! I don't think the First needs anything!"

"Brightness."

Ikari's voice: "It doesn't make a difference, because Ayanami is calm even when her life is at stake."

Rei heard her own voice. "It doesn't make a difference, because no one needs me."

Everyone's words. They were penetrating her...

"That's not true," she thought.

"Wake up..."

Suddenly Rei's eyes opened.

"Rei's awake! Her brain waves are normal. There's no sign of any residual mental pollution!"

"Check the Identification pattern! Hurry!" Misato shouted, sending the room into a flurry of activity.

"Identification complete.....The pattern is red!"

"She's okay... Rei..." Misato couldn't wait and ran to Rei.

What is wrong?

Why are you crying?

Why do you hug me?

It was Rei's own voice that she heard and for some reason that comforted her more than any reply Misato could have given.
(Mark check 6)

● **If it fails**

Rei heard Asuka and Shinji's voices echo in her head.

"If you don't understand it, why don't you destroy it all?"

"If you don't understand it, why do you need it?"

"If you're not part of it, then you can get rid of it all!"

Rei knew that this was wrong. These were not her thoughts.

"...life..."

"It doesn't make a difference, because Ayanami knows her life doesn't matter."

"... daughter..."

"You don't make a difference! I don't need you, First!"

"...time..."

"It doesn't make a difference, because I don't need anyone."

Perhaps it was true.

Suddenly Rei's eyes opened.

"Rei's awake! Her brain waves are normal and I'm not picking up any mental pollution!"

"Identification check! Hurry up!" At Misato's order, the room flew into a flurry of activity.

"Identification complete.....The pattern remains blue!"

"How is that possible?"

Rei heard her own voice echo in her head.

Is it painful?

No. It's all right now. Because I'm not needed anymore...

(No parameter change)

2. It doesn't matter

Rei heard Asuka and Shinji's voices echo in her head.

"If you don't understand it, why don't you destroy it all?"

"If you don't understand it, why do you need it?"

"If you're not part of it, then you can get rid of it all!"

That's right.

If everything is gone, the Angel will be gone too.

That way I won't need it either.

Suddenly Rei's eyes opened.

"Rei's awake! Her brain waves are normal and I'm not picking up any mental pollution!"

"Identification check! Hurry up!" At Misato's order, the room flew into a flurry of activity.

"Identification complete.....The pattern remains blue!"

Rei heard her own voice echo in her head.

Why are you so sad?

I'm sad because I'll be gone soon, right?

Yes. But soon everyone will be with me, so it's okay.

(Mark check 7)

■ Asuka's results

1. What a mess!

● If successful

"If you don't understand it, why don't you destroy it all?"

"If you don't understand it, why do you need it?"

"If you're not part of it, then you can get rid of it all!"

Asuka recognized the voices in her head. She could wrap her mind around that idiot, Shinji and the weird First saying such things, but she could not imagine she would ever say that.

"What stupid things to say!"

"Stupid things?" asked Shinji's voice. Of course, he wouldn't understand what he was saying.

"Yes! If I lose everything, I won't be able to see Kaji-san again!"

"That is your own desire," Asuka heard the First say this time.

"Are you stupid? It means that the EVAs and all of us will be gone too! Why do you think that's good?"

Asuka knew the conversation was strange. She wondered what the cause of the strangeness was.

The First replied. "Because you can't understand it."

"Me? What do you mean?"

"You don't matter here. Don't you wish you could be accepted by someone else?"

"Yes! That's why I pilot the EVA!"

"But no one needs you anymore," Asuka heard the voice of idiot Shinji say.

The words penetrated her heart.

"Shut up! Shut up! Shut up!!"

The moment she resisted the feeling, Asuka suddenly became aware of the ceiling of the hospital room above her.

"Asuka's awake!! Normal brain waves. No signs of mental pollution!"

"Hurry-up identification check!"

"Yes!" Maya's fingers flew over her control console to comply.

"Identification completed! Pattern... It's red!"

As soon as Misato heard the words, her eyes filled with tears.

"I'm so glad, Asuka."

"Misato? What are you crying for?" Asuka heard herself ask.

In answer, Misato hugged her.

In any case, Asuka would have preferred a hug from Kaji-san.

(Mark check 6)

● **If it fails**

"If you don't understand it, why don't you destroy it all?"

"If you don't understand it, why do you need it?"

"If you're not part of it, then you can get rid of it all!"

Asuka recognized the voices in her head. She could wrap her mind around that idiot, Shinji and the weird First saying such things, but she could not imagine she would ever say that.

"What stupid things to say!"

"Stupid things?" asked Shinji's voice. Of course, he wouldn't understand what he was saying.

"Yeah, why would I want to lose everything?"

"Because you want to."

"Me? What do you mean? I don't want that!"

"That is a lie. You don't like it because it doesn't go the way you want." Asuka heard Rei's voice.

How does the First know what I want?

"Sure, because I want to do what I want to do."

At that moment, Asuka saw the ceiling of the hospital room above her.

"Asuka's awake!! Normal brain waves. No signs of mental pollution!"

"Hurry-up identification check!"

"Yes!" Maya's fingers flew over her control console to comply.

"Identification completed! Pattern... It's blue!"

"What!" Misato said in shock.

Where am I? Is this the hospital?

To Asuka, it seemed like her head was filled with a dense fog. She looked over and saw Misato standing there.

"Uh? Misato, why do you have such a sad face?" Asuka asked "I'm going to be alright, aren't I?"

(No parameter change)

2. I don't care because life's already a hassle

"If you don't understand it, why don't you destroy it all?"

"If you don't understand it, why do you need it?"

"If you're not part of it, then you can get rid of it all!"

That's right! I wish the world could be what I want it to be!

"Yes, that's right! I don't need anyone else! I'm fine on my own!"

That's right! That's why I want to get rid of it all!

At that moment, Asuka saw the ceiling of the hospital room.

"Asuka's awake!! Normal brain waves. No signs of mental pollution!"

"Hurry-up identification check!"

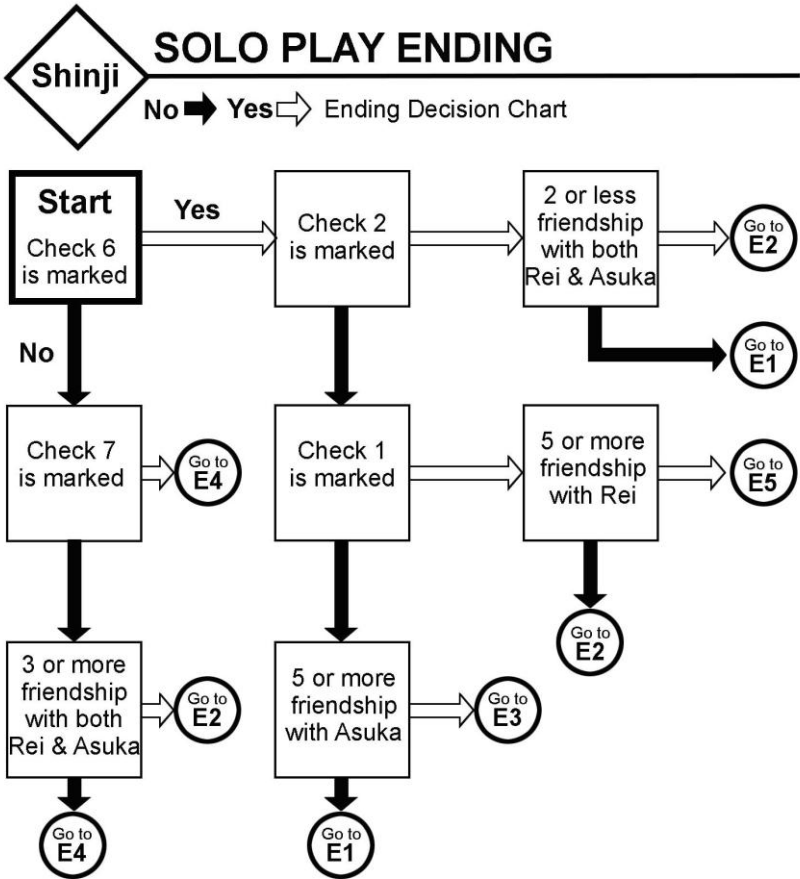
"Yes!" Maya's fingers flew over her control console to comply.

"Identification completed! Pattern... It's blue!"

What, why do you have that face, Misato? Asuka thought to herself. Is it because I'll be gone soon? Don't worry I'll take you all with me and we'll be together forever!

(Mark check 7)

Chapter 4 Solo Play Ending



Shinji E1. Just a little peace

Shinji was in classroom 2A at his middle school. The math teacher was on his podium as usual, talking endlessly about the hardships of the Second Impact.

Shinji turned his head to look around. He could see Asuka checking her watch out of boredom and Rei looking out the window. There were his classmates, Touji, Kensuke and Hikari. The classroom looked the same as always.

Two weeks had passed since the incident.

Shinji had been hospitalized for several days during which he was repeatedly examined, but he was discharged soon after because nothing abnormal was found. Rei left Misato's apartment and returned to her own place.

Shinji and the other two pilots had not talked about the incident since they had resumed their daily lives. No one at NERV had said anything either, not even Misato and Ritsuko.

Of course, Ritsuko and her colleagues had continued to research the case, but Shinji never got any information about it, and he didn't ask. It was over and Shinji didn't want to think about it.

Although it was a serious incident, Shinji was getting used to the daily dangers of fighting the Angels and even the occasional EVA. It wasn't about fighting that he wanted to think about, but living.

The chime sounded signaling the end of class and the start of the lunch break. The quiet classroom exploded into excited noise.

Shinji stood up with his lunch box, listening to the cheers of the particularly boisterous Touji.

The weather was fine that day and as always, he went to the roof with Touji and Kensuke.

Chapter 4 – Solo Play Ending

Perhaps an Angel may appear the next moment. Or then again, he might end up fighting an EVA.

But right then, Shinji decided not to think about it. He chose to lock it out of his head and forget it. At least for now, he had this little bit of peace...

Shinji E2. The boy who refused life and death

Shinji was drifting in the darkness. Only his own voice echoed in the darkness.

"Is this what it's like to die?"

A voice he had never heard before answered. There was something familiar about it. It sounded almost like his own voice.

"What is it like to be alive?"

"I don't know."

"Do you want to die?"

"I don't know."

After a moment of silence, the voice spoke again.

"Is it pleasurable to be alive?"

"It's not pleasurable."

"Is it painful to die?"

"I don't want to suffer."

"Why are you alive, if it's not pleasurable?"

"No, but it's not unpleasurable either."

"Why do you want to die when you are not in pain?"

"It's easier to die."

"Then why do you stay alive?"

"To experience pleasurable things."

"Really? Even if it means more pain."

"Do I really want to live?"

"You want it to be easier, but..."

"I don't want to die. Or live."

In this way, Shinji continued to sleep, wandering forever in an endless dream. That was the place chosen by Shinji, who refused both life and death.

Shinji's fate became far different from the original. It was unavoidable. That was the path he chose.

Shinji E3. Shinji, a swaying heart

A few days later, Shinji woke up after a long sleep.

At NERV, the entire series of incidents had been covered up. All records of the events had been deleted.

But for Shinji and the others involved in the case...

"Hey Shinji, what's on today's menu?" Asuka asked, bored.

"I was thinking of making stew today..."

Rei, who had been living with them up until the previous day, had returned to her home and Misato was busy at work as she had been for the last few days.

Therefore, only Shinji and Asuka were in the apartment at the moment.

Things were back to normal. Rei was not around and it wasn't unusual for Misato to return home late.

Given this, everything should have felt the same as before.

However, Shinji looked strange for some reason. He looked like he was nervous.

"Well then how about you make it right away. I'm starving."

"Oh, okay..."

Shinji, who had been walking into the living room, turned around and headed back into the kitchen.

He had been alone with Asuka many times before, but now it seemed different somehow. Shinji wasn't sure why he felt that way, but he had an idea.

"I guess I like living together this way." Even as he said it, he knew how ridiculous it sounded.

"What did you say?" Asuka demanded.

"Nothing! Nothing! I was just thinking out loud," Shinji said, trying to cover it up. Asuka eyed him suspiciously then shrugged.

"Whatever, just think to yourself more quietly next time."

"Ah, sorry... the stew's coming soon."

The scene around the dining table that night was as usual, but Shinji was happy with it.

Because as long as he piloted the EVA, there was nothing between himself and this scene happening again tomorrow.

Shinji E4. Merge with the Angel

"Did you call me here only to pilot the EVA?" Shinji shouted at his father, Gendou. There was a kind of madness in his eyes. The desire for "destruction" was rising in his heart. "Answer me father!"

Shinji had merged with the Angel and he had become powerful beyond words. Without even touching things, he could blow them away just with a single thought.

Shinji used his power over and over again to tear through NERV's defenses to reach Gendou.

He killed everything that got in his way. Finally, Shinji and Gendou were the only two still alive in NERV headquarters.

Gendou was silent. He looked straight at Shinji, not speaking a single word.

"Okay, dad." Tears flowed down Shinji's cheeks.

Gendou's body was blown away and hit the wall directly behind him. His body bent unnaturally, and red liquid spread out in a pool around him.

He had fulfilled one desire. Beyond that though, there were many other things he wished to destroy.

"It has just begun..."

First, he would destroy NERV headquarters. Then Tokyo 3.

All three Eva had already been destroyed. It was fair to say that there was nothing that could stop Shinji or the Angel.

Shinji continued to destroy. But he could not be satisfied. He was no longer fighting the Angel for his life. He had become the enemy of mankind, leading the world to its ruin...

Chapter 4 – Solo Play Ending

In this way, Shinji decided to take a path that was different from his original destiny.

Shinji E5. Seeking the shadow of mother

“Where am I?” Shinji looked up and saw the ceiling of the hospital room.

It was the usual ceiling that he had seen a lot of lately. Ever since he first had piloted an EVA. He was getting used to seeing it. Shinji became aware that Misato-san was looking at him with tears in her eyes.

"I....."

"It's okay, the Angel has disappeared."

As he heard those words, he noticed Ayanami sitting next to his bed. She was wearing her usual uniform and facial expression. Looking into her eyes, he noticed they too were the same – he couldn't tell what she was thinking.

It may have only been a few seconds that they stared at each other.

"Mother.....?" Shinji asked. For a moment, Shinji thought he saw Ayanami's eyes overlapped with his mother's eyes, which he only vaguely remembered.

After a short silence, Rei replied, "I am not your mother."

Shinji couldn't see her expression as she spoke, but he felt like she was peering into his heart with her tone.

"Everyone is waiting. You should put on your clothes," Rei said as she stood up to leave the hospital room.

"Somehow, Ayanami, you look like my mother." The honest impression that he felt when he saw her from the back made him unconsciously speak.

Ayanami stopped, as if about to reply, and then left the room without saying anything.

Why did the face of my mother overlap Rei's face?

Why does Ayanami always protect me?

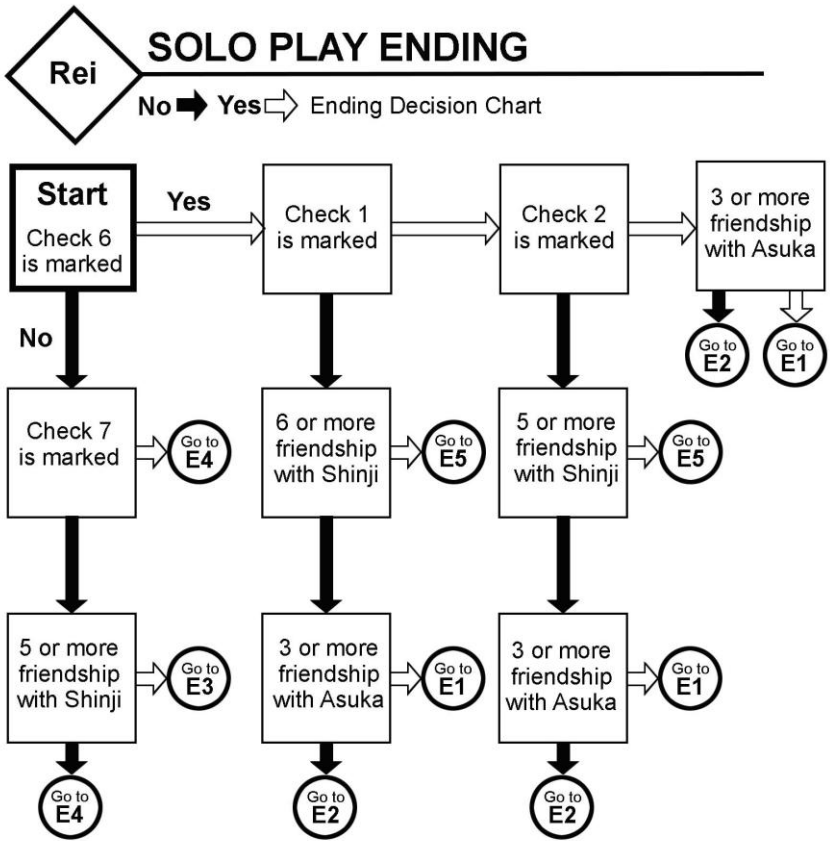
Did she keep watching during this whole time?

"Maybe she's just being nice," Shinji said, shaking off the feeling.

He picked up the clothes which Rei had dropped off for him. The Angel was gone.

"I have to go back to everyone," Shinji said, putting on his clothes.

He did not know when a new Angel would emerge.



Rei E1. “See you tomorrow.....”

It was a few days after the incident.

After the Angel had disappeared, several inspections were performed, but no abnormalities were found, and Rei was discharged. With the emergency situation cancelled, she was allowed to return to her own home.

“Oh, finally my cramped life is over! The First is messy when she’s possessed by an Angel,” Asuka said as she stood behind Rei who was packing her bag.

But it seemed that her words were not said with disgust, but something similar to familiarity. Something had changed between the two after living together for so many days.

"It was tough. I had to make excuses to everyone at school. Everyone is so nosy."

Just as when MAGI had been invaded by the Angel, this incident was not known to anyone but the people involved. It was kept secret by the Japanese government and the old men of Seele. There must be some reason for it. But the children were never told why it was.

Gendou Ikari, NERV’s commander, was silent on the subject. But after the results, he had to believe it was true. And that was enough for Rei.

"I’m glad you’re okay, Rei," Shinji said with a smile.

“Maybe I have changed,” Rei thought to herself. In the past, she wouldn’t have had any particular feelings about these sorts of words spoken to her. She would not have had any reaction. But not now. Now she had feelings for everyone in her life, not just Commander Ikari.

"See you tomorrow," she answered softly with a little smile. It felt like it represented every way that she had grown through this incident. "I'll be there."

Misato was waiting outside. She was ready to return home and to the same life she had led before. But she would never forget what she had gained from this experience. That her heart had been touched by the hearts of Shinji and Asuka.

With a much stronger purpose than ever before, her everyday existence had begun to move forward again.

Rei E2. The assigned mission

The turmoil caused by the Angel had subsided and life had returned to a peaceful state.

It was time for Rei to leave Misato's apartment and return to living by herself.

Her belongings consisted of just a few clothes, so she was ready to go.

"Well, goodbye," Shinji said sadly at the entrance.

"What are you talking about? We'll see her tomorrow," Asuka snapped at him.

"Well, it certainly has been interesting, hasn't it?" Misato asked with a smile.

"Yes. Goodbye," Rei said with a quick bow as she went through the automatic door which opened to let her out and closed behind her.

At that moment, the strange communal life of the four people ended as one closed the curtain on it.

Still, Rei was not lonely. She was used to living this way. Looking back, only once, Rei went home.

After having been gone for so many days she looked at her little room with something like nostalgia. She might be alone in this place, yet she liked it. The reason was...

"I'm home." Rei said quietly as she lifted a pair of glasses of a shelf. The memory triggered by them comforted her.

She put the glasses on. But she knew memories were after all just memories. You cannot live by just immersing yourself in them. But it was good to remember them once in a while.

Chapter 4 – Solo Play Ending

What was most important though was focusing on what to do in order to survive. Rei knew that.

She would take Evangelion Unit 00 and defeat the Angels.

That was the mission that must be carried out, even if she had to discard her own life.

Rei's heart was fixed. Her battle was not over.

Rei E3. Dream

"Who am I?"

The question suddenly came into Rei's mind followed by a flurry of answers, all in her own voice.

"I am... me"

"Rei Ayanami"

"One of the many. One with a soul."

"I am many..."

"There are many different ones..."

"You don't have to be alone...it's okay."

"Dying is the way to freedom."

"It doesn't matter."

Everything in her memory welled up within her.

"Is this a dream?"

"Perhaps everything has been a dream until now."

As she thought this, a part of her heart became lighter.

"Everything has been dreams up until now. I have just been dreaming."

"I'll wake up a little later. There's a different me in my dreams..."

The dialogue within her heart went on that way eternally.

Soon, Rei was unable to distinguish between reality and dream.

Perhaps the instinct that worked to lighten the burden in her mind had worked too well. Rei felt her real self slipping deeper and deeper into the dream.

"I'm just dreaming. I'm sure soon I will awaken."

Staring at the ceiling of the patient's room with glassy eyes, Rei's lips moved as if saying those words, but no sound emerged.

The road that Rei was meant to take originally had diverged greatly. The destination of her original path was going far, far away.

Rei would never wake up and return to the original story. She had abandoned living.

Rei E4. Birth of the Angel

"Rei!?" Misato's voice couldn't hide her surprise at Rei's sudden appearance on the monitor.

She was standing at the foot of Unit 00.

The identification signal displayed "blue".

"Destroy," Rei muttered, looking up at the EVA.

"In the beginning, there was destruction," she said with a smile that didn't look like Rei. She reached up and touched the EVA.

"What are you doing, Rei!?" Misato shouted, but her voice did not reach Rei.

"Stop, her!" Ritsuko ordered the technicians around her.

"It's no good! The passage is locked!" Maya replied.

"Cut power to the EVA, hurry!" Misato shouted.

"All orders are being rejected!" Maya exclaimed.

Unit 00 began to move.

"How... how can it be moving?" Ritsuko asked, shocked. The power circuit to Unit 00 had been cut off, and it should not have been able to activate at all.

"Identification pattern blue confirmed," The voice of Maya echoed heavily. "It's coming from Unit 00!"

"Not only Rei, but the EVA itself must be an Angel!" Misato said.

"Rei... have you taken in Eva?"

Time has stopped.

Gendou's voice broke the silence. "Evangelion Unit 00 is identified as the Thirteenth Angel at this time." His voice was mixed with a strange bitterness.

Thus, Rei and Unit 00 were destined to be eliminated as Angels.

A scenario different from the main story had taken place.

Rei E5. Smile

Rei knew she was being carried along in a moving bed because she could see the ceiling tiles racing by above her.

Her body was extremely tired and she couldn't move a finger, let alone get up. Her whole body had a numb sensation, and even the familiar voices of Misato and Ritsuko, who were speaking right next to her, seemed to be coming from a great distance.

But Rei's heart was strangely clear.

She felt that it had only been a few minutes since the Angel in her mind had disappeared.

Rei blinked. Her eyes closed. When she opened them again, everything had changed.

The corridor ceiling was gone, replaced by Shinji's face, looking down at her anxiously.

The moment their eyes met, Rei felt herself smile, driven by a strange impulse.

"Ayanami?!"

"At such times... isn't it appropriate to smile?" she asked.

Shinji's expression, which had been one of surprise, melted when he heard Rei's words.

It was just like after the battle with the Fifth Angel when the two of them had felt a deep connection.

"I think you should smile," Shinji said, smiling back at Rei.

Actually, Rei was not smiling because of Shinji, but for someone else who was not there.

However, today she showed the smile to Shinji.

Only then did Rei realize that she was in a bed in a hospital room.

It seems that he had slept for several hours, although she

intended to just close her eyes for a moment. Even so, her body was still very tired.

“You’re safe and in good shape. Anyway, Ritsuko-san says the Angel reaction disappeared...”

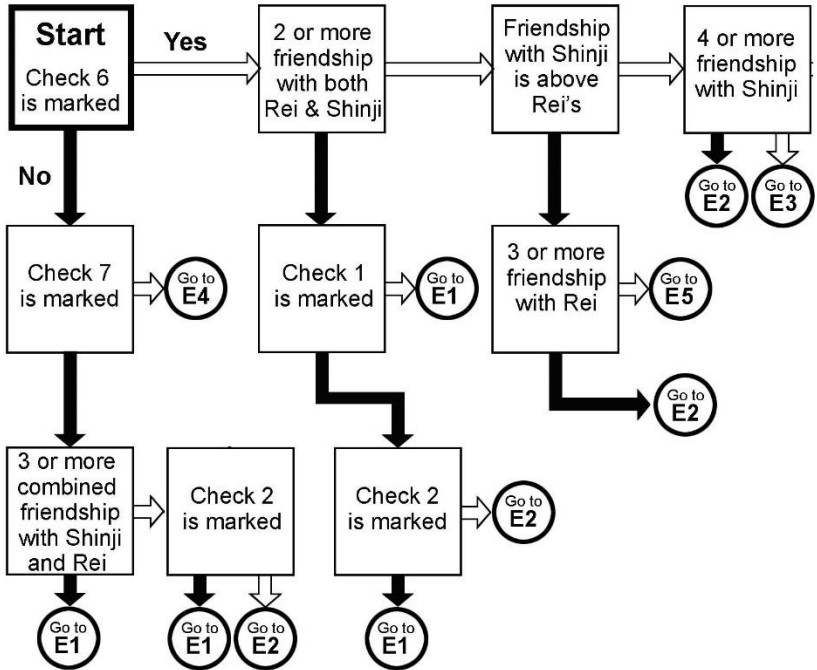
"I know." Rei said, her face returning to her normal expressionless look.

Rei closed her eyes again, closing out Shinji and the hospital room. She knew more Angels would appear. It was necessary to recover her physical strength to be able to pilot the EVA as soon as possible. The next time she woke up, it could be time for another battle.



SOLO PLAY ENDING

No ➔ Yes ⇨ Ending Decision Chart



Asuka E1. Asuka's closed heart

The Angel touched the deepest part of Asuka's hidden heart – a part that she had never revealed or even dared to bring up with Misato or Shinji.

In an instant, the Angel disappeared. It may have been destroyed by Asuka or it may have become one with Asuka's heart.

Whatever the case, as soon as it happened, the identification pattern blue disappeared.

Yet it had drilled a hole deep inside Asuka's heart.

She realized she was alone!

"Can you live alone?" The question in Asuka was asked by a vision of Rei.

"You can't live alone," this time it was a vision of Shinji.

"I can live without relying on anyone else!"

"Don't you have to rely on the Eva?"

"It's because of the EVA, you are alive here now..."

"Even without the Eva, I can show my talent to the world!"

At that moment, both Rei and Shinji's visions smiled.

"You can't do that, because you're piloting an EVA now."

"You don't exist without the EVA."

"That's not true!"

"Nobody needs you..."

"Nobody exists for you..."

"I'm the number one in sync rate. I'm the best!"

"Then, what about the First?"

"Then what about Ikari?"

"I don't need anyone!"

"Goodbye..." The visions disappeared.

Chapter 4 – Solo Play Ending

Asuka was left alone in the darkness with nothing to hold on to. Her story, which should have continued, ended. She never regained consciousness.

Asuka E2. "I can't lose"

It was three days after the incident and another regular synchro test was being held. However, only Shinji and Rei were being tested. Asuka found herself excluded.

"Why on earth, am I the only one being left out!" Asuka whined.

Ritsuko tried to calm her. "I can't help it. I have to do a little more inspection first."

"But Shinji and the First are there already!" Asuka looked at Shinji and Rei in the monitor.

"Have patience. You just need to wait a little bit longer."

Since the pattern had turned blue, it was not unusual that they would be cautious. Still, Asuka wasn't sure what was going to happen to her.

She wondered if she could ever pilot an EVA again? Her heart was filled with bad thoughts, she was too scared to say out loud.

"Asuka, I just got the result of the re-inspection." Asuka looked up and saw Misato next to Ritsuko.

"As a result of the re-inspection, it is concluded that the pattern blue has completely disappeared. It's been decided that there is no problem, and tomorrow you will perform a synchro test with Shinji and Rei."

Asuka, who was only half listening to Ritsuko's words, suddenly doubted her ears.

"Really? I can pilot the EVA again?"

Misato replied with confidence that calmed Asuka's concerns.

"Obviously, you're the exclusive pilot of the Eva Unit 02"

The next day.

Asuka was able to achieve very good results in the synchro test after such a long absence.

“Asuka, it looks like you're in good shape despite what happened,” Asuka heard Misato say.

“Of course. I can't lose to those two,” Asuka answered as cocky as ever.

Asuka decided to forget about that incident. She would pilot her EVA again and fight the Angels.

Asuka E3. What is hidden in the heart

"Argh... I can't believe this is happening!" Asuka exclaimed.

It was late at night. Rei who happened to be sharing the Geofront elevator with Asuka didn't react to her sudden outburst.

Three weeks had passed since Asuka had awakened after the series of events, but Asuka was still obliged to perform regular inspections.

In the meantime, not just Asuka, but all of Tokyo 3 including NERV, had gone back to their daily routines.

Still, Asuka was being subjected to the tests, and this time Rei had also been required to be involved.

"It can't be helped since the pattern blue was detected," Rei observed in her usual monotone voice.

"Shut up! I know that!" Asuka shouted back, clearly in a bad mood. "And why aren't they worried about that idiot Shinji?"

"Did you think about him during the test?"

"What? No, of course not!" Asuka replied, blushing as she answered.

For a long time the two rode together in silence. This was typical for Rei, who usually didn't have much to say.

"Why did you ask if I thought about Shinji?" Asuka asked, trying to understand the reason.

"Because you are living together," Rei said. The answer caught Asuka totally off guard.

"What does that have to do if I was thinking about that idiot or not?" Asuka's words protested, but her mind reeled. He had actually been thinking about Shinji quite a bit since waking up

after the series of events. “Why don’t you mind your own business!”

It seemed that it would take some time before Asuka would come to terms with the strange new feelings that had arisen within her.

Asuka E4. Those who enjoy destruction

"Destroy!"

Asuka wanted only to satisfy the desire that arose within her heart.

She obliterated the hospital room and went outside. The city spreads out below her. She sensed that if she destroyed it, she would find some of that satisfaction.

"Stop it, Asuka!"

An obstacle appeared in her way.

It was Shinji piloting Unit 01 and Rei piloting Unit 00.

"Destroy!"

The voice within her made her smile with an unnaturally evil grin.

The object that she truly wished to destroy had come to her.

Merged with the Angel, she was no longer human. She was an Angel. She had the same or even greater power than an EVA.

"Destroy!"

She raised her arms and at the same moment, Unit 00 was blasted back. It crumpled and bent in an unnatural way.

The act of destroying gave Asuka supreme joy. She moved in for the kill.

Suddenly, Unit 01 blocked her approach to Unit 00.

"Asuka, don't give in to the Angel!" The pilot of Unit 01 screamed at her.

Asuka?

She searched her memory, but she didn't remember that name.

Asuka's body was no longer Asuka. The Angel had blown her heart into oblivion.

"Destroy everything!"

Chapter 4 – Solo Play Ending

At the sound of the voice, she turned EVA Unit 02 and that wicked smile toward Unit 01.

Asuka swung her arm toward Unit 01.

Thus... she went on a different path than the one she had been destined to follow.

Asuka E5. The white wall

It was a few days after the incident.

Although the disappearance of the Angel was confirmed, Asuka was not free from the whirlwind of inspections. Asuka was the first case of an Angel penetrating a human "heart", so Asuka was a precious sample of the experience...in short, she was a guinea pig.

"What the hell... the inspection isn't over yet? You people worry too much!"

Getting it over with was Asuka's long-awaited wish, but no one seemed to be in a hurry, and time went by tediously. Alone in a hospital room with four white walls, Asuka, heard sounds from the outside as her ears adjusted to the quiet.

The sound of the air conditioner, the occasional footsteps of people walking in the hallway. Then one time, voices.

"She may not be usable." It was Commander Ikari's voice.

"Then from now on it will only be me and Ikari?" That was the First's voice.

But what does she mean, only the First and Shinji?

The lengthy confinement made Asuka feel sick. She wanted to yell, but a person under examination cannot cause problems. And it was Commander Ikari on the other side of the door. She realized that yelling was useless. She focused her concentration and listened to the lowered voices.

"The ordeal may prove too much for her. But we have already identified a fourth candidate as a replacement."

“What's that?” Asuka jumped off her bed in her hospital gown. She wanted to scream at the door, but she held her breath and listened.

Rei's voice spoke again.

"I don't think that is necessary. The pilot is not that weak." With Rei's words, Asuka regained some of her composure.

That's right! I'm not weak. I can withstand anything! Asuka thought to herself.

“Alright,” Commander Ikari's voice said. “We'll wait and see.”

Another 3 days. Every possible test was performed. In the end, all the results were satisfactory.

Asuka was cleared and released from the hospital room with its bare white walls.

Asuka's first action after being released was to find Rei.

"I owe you one, First," Asuka said bluntly.

"Why is that?"

"Because I'm back! When I was down, you had my back and I'll repay you."

Ayanami just tilted her head, and Asuka said nothing more. There was nothing more that needed to be said between the two.

Asuka was indeed back and ready to fight more battles with new Angels.

Chapter 5 Playing with a Group

1. Contents of multiplayer

● GM and player roles

In the case of multiplayer, the player must choose between playing Shinji, Rei or Asuka to protect Tokyo 3 and live their lives. The game master (hereafter GM) is in charge of other characters (such as the NERV staff and the Angels) and the progress of the game.

Asuka: This is really easy. The number of players required to play the game is a GM who is the facilitator of the game and at least one player. You can play with just those two. The maximum number of players is four, with one GM and three players.

Shinji: How do you become the GM?

Asuka: For that kind of basic knowledge, see the MAGIUS Start Book. That book covers the basics of how to play a table talk game.

Shinji: Um, Start Book? What's the Start Book?

Asuka: If you're new to Table Talk RPGs, you need the MAGIUS Start Book. To be honest, for solo play, if you just know the difference between rolling two dice for Abilities and three dice for Skills you'll be fine. Though it's still a good idea to read the Start Book just as an introduction to the concept of Table Talk RPGs.

Shinji: By the way, is it necessary to know the basics of RPGs in order to play with other players?

Asuka: You can play multiplayer purely as a combat game between the EVAs and the Angels without knowing what an RPG is. However, if you want to experience character play, you can

play deeper and with more fun by understanding how to play an RPG. Do you get it?

Shinji: Uh... yeah, I guess.

● **Game content and purpose**

The game is played according to the events prepared by GM.

The main event will be to repel the Angel approaching Tokyo 3. It is played like a card game so even those who are not familiar with how to play an RPG can easily play it.

Asuka: That's what I just said! If you've played table talk RPGs, or if you've read the Start Book and know what an RPG is, you're ready to play.

Shinji: So, it's not just purely a card battle-type game?

Asuka: That's right. I'll give you a quick explanation about how to play.

■ **What to prepare**

The following items are required to play this game.

A copy of your character sheet (at the end of the book)

A pen or pencil

Dice (3 per person is ideal)

1 set of playing cards

Asuka: I don't think there's much need for commentary. The key items used by the players are copies of the character sheets for keeping track of information, writing instruments, dice and playing cards. All you have to do is prepare.

Shinji: But it's a pretty small sheet that you have to copy.

Asuka: Are you stupid? Doesn't a copy machine have a scaling function? Make the copy bigger!

Shinji: Oh, yeah. Right.

Asuka: You really didn't think of that?? Are you serious or seriously stupid?

Rei: Ikari-kun said it intentionally. The commentary requires us to raise basic questions by feigning ignorance.

Asuka: Really?

Shinji: Yeah...um, that's exactly what I was doing. I thought we should leave the explanations to Asuka. That's why I was being a representative of the reader and asking basic questions.

Asuka: Hmm. Well, as long as you leave the explanations to me, the decision is correct. However, in the case of Shinji, I can't tell the difference between if he's being intentionally obtuse, or actually obtuse, so watch it.

Shinji: Uh, yeah. I'll make it a little more artificial.

Asuka: You should do that.

Shinji: Though I'm not really sure how to do that.

Rei: ...

Shinji: Ayanami? Why are you looking at me like that?

Rei: No reason.

● **When using the characters used in solo play**

If you use a character that you used in solo play, keep in mind that the character should only experience the events up to Event 7. After Event 7, there is no data related to the multiplayer game. Then again, there is no problem if the ending is reached.

However, from the perspective of “events experienced by the character”, it would be desirable for the characters only to have experienced up to Event 7.

Shinji: So, what exactly does that mean? It sounds pretty complicated.

Asuka: It’s actually very simple. It just means if you want to play multiplayer with a character don’t play past Event 7 with that character. But even if you do, it doesn’t matter.

Shinji: That’s it? What else does it mean?

Asuka: It means what it means! In solo mode don’t play past Event 7 if you’re going to play multiplayer with the character! With solo player, you’re either building a character to play multiplayer or you’re just playing the solo game to the end and that’s the end. How do you not get that?!

Shinji: What the hell. If that’s what it means, why not just say that!

Asuka: It’s plain as day. You’re just too dense to understand, Shinji!

Shinji: Oh. Sorry.

■ **Experience solo play with a group**

If you're not able to run each player through Solo Play individually, you can do it as a group. This is fairly simple.

1. First, the GM plays the role of facilitator and reads "What Happens" for each event.
2. The Players then discuss among themselves what option to choose. They then decide on one player to make the choice and resolve the decision.
3. Turn to the appropriate result. As for results, only the card limit and MP data should be used. These apply to all three characters.

Shinji: This means that we all play solo, but together.

Asuka: Right. That's what it says.

Shinji: What happens if the GM is embarrassed reading the "What Happens" out loud to the players?

Asuka: Are you an idiot? You can't be shy about what you're doing in a table talk RPG.

Shinji: Well, maybe that's true. But there are also some people who are not good at reading.

Asuka: Fine! If that's the case, then either the GM can have the players take turns reading from the same book, or if everyone has a copy then he can say "read whatever number event."

Shinji: Oh, I see. I guess that could work.

Asuka: Hang on Shinji, what are you worried about? There's another point to this question, isn't there?

Shinji: Well, maybe. I mean what if the GM's worried one player is benefitting more than the others because they chose a better character?

Asuka: How? The result of solo play applies to all the characters equally. For example, even if I decide to make a decision at an event and the result is that the upper limit of MP is increased by one... that increase in MP is not only for me, but Shinji and the First. Everybody's results are the same.

Shinji: Right. But then, knowing everyone will advance equally, you can choose a character that already has the best parameters...

Asuka: Wow, you are the worst. That's not how you should play this game.

Shinji: Yeah, but...

Asuka: But nothing. Choose the characters and make the choices using the feeling that "this character would do this". It's an RPG first and foremost. Unless you play from your gut, the game will not be fun!

2. Character introduction

Now let's introduce the characters. Each character is defined according to the following data.

Name

Attributes / Body, Mental, Technique, HP (Eva Durability), MP (Synchro).

General skills / Skills that a character is good at.

Combat skills / Skills when fighting using an EVA.

- Shinji Ikari

Attributes

Body: 7

Mental: 7

Technique: 8

HP:30

MP:15

General skill / <Housework: 4> <Willpower: -2>

Combat skill/<Melee: 5> <Ranged Combat: 4> <Counter: 6>

- Rei Ayanami

Attributes

Body: 5

Mental :9

Technique: 8

HP:26

MP: 13

General skill / <Cool die roll: 5>

Combat skill / <Melee: 4> <Ranged Combat: 4> <Counter: 5>

- Asuka Langley Souryu

Attributes

Body: 6

Mental :11

Technique: 9

HP: 28

MP: 14

General skill / To <Reflexes: 3> <Willpower: 3> <Cool die roll: -4>

Combat skill/ <Melee: 6> <Ranged Combat: 5> <Counter: 4>

3. Skill explanations

■ Skills and Weaknesses

There are two types of skills, "general skills" and "combat skills". To briefly explain the difference between these two types, the general skills are the skills of Shinji, Rei, and Asuka. These are different from the fighting skills when the pilot the EVAs.

General skills can be used at any time because each person has his or her own specialties.

Combat skills are skills used when the characters pilot the EVAs, so naturally they can only use them when they are in an EVA.

Also, a skill with a negative level means it is a skill that the character is not good at. Of course, a negative penalty will be deducted from the die roll as a weakness.

The GM judges what skill (or attribute value) to use at the time of a die roll and informs the player of it.

Asuka: Well, the only point to note is that skills can be either "general" skills or "combat" skills. If you look at the explanation, applying a negative number when a skill is a weakness may look a little complicated, but the character sheet has the numbers calculated from the beginning, so there should be no problems. All you have to do is remember your strengths or weaknesses and you'll be fine.

Shinji: Then, I only need to remember "general skills" and "combat skills"?

Asuka: If that's all you remember, that's okay. A "general skill" is exactly as it appears in the start book, and the "combat skill" is

basically the same as any other skill, but it can only be used while piloting an EVA.

Rei: The rules to resolve regular actions and combat actions are different.

Shinji: They are?

Asuka: I was just getting to that. You use dice to resolve regular actions, but you use playing cards to resolve combat actions.

Shinji: Do you need playing cards?

Asuka: Yes. I will explain about the method for resolving each skill after explaining the skill.

● **Shinji's skills**

Housework (Technique: Shinji's sum of skill level and attribute level is 12)

This is a skill for all household chores such as cooking, cleaning and washing. Was Shinji like this before coming to Tokyo 3, or did he have to pick it up because of living with Misato? Whatever the reason, Shinji excels in this skill for someone his age.

Willpower (Mental: The sum of the skill level and attribute value is 5)

This is a skill that allows you to assert your own will and bend the will of the other person (well, there are many natural aspects to this, so it may not exactly be a skill).

If you have this skill, you can push your own view point when you disagree with other characters, but in the case of Shinji, this skill is a weakness, so the number is a negative.

● **Rei's skill**

Calmness (Mental: The sum of skill level and attribute value is 13)

This is a skill to analyze a situation calmly without losing your cool under any conditions.

With this skill, you will be able to resist provocations from other people, emotional shocks, etc.

● **Asuka's skills**

Dexterity (with this bonus Asuka's Body attribute becomes 9 and her Technique is 12)

This is a skill used to move and control the body such as when jumping or balancing. Use the body-based number when you need strength, and technique-based number when you need agility and accuracy.

Willpower (with this bonus Asuka's Mental attribute becomes 15)

This is exactly the same as Shinji's skill. However, for Asuka, Willpower is a strength and she should take full advantage of it when she can.

Calmness (with this skill Asuka's Mental attribute drops to 7)

It's exactly the same as Rei's skill. However, Asuka has this as a weakness, so it brings down her Mental attribute in situations where she is under stress or provoked.

Asuka: The section above explains the skills that the three of us possess. It is up to the GM to decide which skill to use in any given situation. So, the GM needs to keep these skills in mind to some extent.

Shinji: Does the player need to remember them?

Asuka: It's a good idea to remember them, and mention them when an appropriate situation arises, but you don't have to force yourself to remember. After all, a Table Talk RPG is a very interactive game. It's more important to play your character and be involved in the story than worry about the mechanics.

Shinji: I see. I think it would help to remember the information to play the part.

Asuka: Anyhow, it's just a reflection of the person.

Shinji: But how accurate is it? I mean, Asuka seems pretty weak.

Asuka: What?!

Rei: No one is the best judge of their own strengths and weaknesses.

4. How to play

■ Role of playing cards

In this game, playing cards will be used instead of dice when fighting with the EVAs. For cards, prepare the deck by removing the jokers.

Each playing card suit (symbol) corresponds to a combat skill, and the number on that playing cards is added to the combat skill and used instead of a die roll.

The combined numerical value of the card and any bonus from the weapon determines the damage when the attack hits. For more information, read the description of the battle resolution in the next section.

Asuka: What's important to keep in mind here is that there are three card suits that have an impact on combat, and each of those suits corresponds to a type of fighting.

Shinji: Um... So, the suit must be compatible with the combat skill. Use the value of the card and the level of combat skill to determine success.

Rei: And, if the attack is successful, the playing card's number will be the damage.

Asuka: Right. For the moment just try to remember that. In a minute, I'll explain each and every step in detail.

■ Meaning and value of the cards and suits

The playing cards used for determining number values range from the 2 to the King. The face cards after 10 have the following values: Jack – 11, Q - 12, and K - 13.

The Aces serve as "event occurrence cards", and when drawn each generates a different event or effect for the characters. For details on the event occurrence cards, see "Events" below.

Each suit (symbol) corresponds to the following combat skills:

♠ ...Use these cards for close combat (melee combat). If you don't have a ♠ card when you want to engage in close combat, the number is automatically 1.

♣ ...Use these cards for ranged combat. If you want to engage in ranged combat and do not have a ♣ card, the number will automatically be 1.

♦Use these cards to make a counter attack. If you want to perform a counter and you don't have a ♦ card, the number is automatically 1.

♥ Use these cards to restore MP up to the value of the card. However, no matter how high the value of the card, you cannot exceed the original number of MP the character has.

Asuka: Like it says, when you fight with an EVA, you should perform the type of combat that best suits the cards you hold in your hand. So, if you have a spade you'll want to fight in close combat, and if you have to have a diamond, you'll want to do a counter attack.

Shinji: But if you don't have the right suit, then it's treated as a 1?

Asuka: Well, depending on how you fight, you can maybe do it with one, but it will be a painful fight. I'll continue to explain about playing cards.

■ Number of playing cards

Playing cards are dealt before the game. The GM should shuffle the cards well and deal them to the players.

The number of cards dealt to each player who has experienced solo play is the number of cards earned from play +3 additional cards. If they have not played the solo game, then they receive only 5 cards. The GM is dealt only what the Angel requires.

The remaining cards are turned upside down, placed on the table, and treated as a pile. When drawing a card, pull it out of this pile. Also, if an Ace is the first card dealt, return it to the pile, shuffle it well, and draw another card.

The GM should keep in his hand as many cards as the Angel requires.

Asuka: First of all, let's explain the hand. Those who only play multiplayer will only receive 5 cards.

Rei: This is different than those who have experienced solo play.

Asuka: Right. Characters that have gone through solo play should have recorded on their character sheet the changes to their MP, HP and card numbers, based on their progress. The number of "cards" you earned, + 3, is the number that you receive.

Shinji: What does it mean about the GM's hand and what the Angel requires?

Asuka: Hang on. I'll explain about that in the "Angel" section, so the person who is acting as the GM should be sure to check that out. When you receive a card, look at it and decide what to do next.

■ Select EVA options

Prior to the start of the game, players can choose two weapons to equip their EVA with from the following list of weapons. There are three types of weapons, "close-combat weapons", "ranged weapons" and "armor". From these, select two weapons that are best for the card suits in your hand.

You can take action even if you do not select these options in close quarters and counter attacks, but in long range you cannot take action if you have no ranged weapon, no matter how many cards you have. If you want to do that, be sure to choose one ranged weapon for ranged battle.

After selecting the options, write them down in the "Equipment" field on the character sheet.

Weapons list

Close combat weapons

"Hand to Hand"

Number of uses: No limit Damage: Card number ± 0

Description: Combat: This attack involves hits and kicks performed directly by the EVA unit. This action does not require weapons, so it can be done any number of times.

"Progressive Knife"

Number of uses: No limit Damage: Card number +1

Description: This is a knife that use a high frequency vibrating blade. It is standard equipment for each EVA Unit. If the attack is successful, the damage dealt to the opponent has a value obtained by adding 1 to the value of the combat card drawn.

"Sonic Glaive"

Number of uses: 4 Damage: Card number +3

Description: A progressive knife converted into a Glaive (barbed weapon). If you succeed in attacking, the damage to the opponent has a value obtained by adding 3 to the value of the combat card.

"Smash Hawk"

Number of uses: 3 Damage: Card number +5

Description: A progressive knife converted into an ax. If you succeed in attacking, add 5 damage to the value of the card.

Although it does a lot of damage, it has a drawback in that it does not last long because the blade has been stretched into a wide ax.

Long range weapons

"Palette Gun"

Number of uses: 6 Damage: Card number +1

Description: A gun that shoots depleted uranium ammunition using an electromagnetic rail. It's easy to handle, and the firing rate is high. It is as destructive as a knife. If you succeed in attacking, add 1 damage to the value of the card that was played.

"Positron Rifle"

Number of uses: 3 Damage: Card number +5

Description: A small positron gun. If you succeed in attacking, add 5 damage to the value of the card that was played.

"Large Positron Rifle"

Number of uses: 1 Damage: Card number +15

Description: This was used to defeat Ramiel. It only fires one shot, but its great power can defeat a weak Angel in a single attack. If you succeed in attacking, add 15 to the value of the card.

Armor

Shield

Number of uses: Until broken: HP 20

Description: This is a modified heat shield from an SSTO. When the EVA receives damage, this shield will take the damage instead until it reaches HP 0. When the cumulative damage reaches 20, it will break.

Asuka: That's the EVA equipment used in this game. Before starting the game, you can choose two weapons and defense skills other than "melee" that you have from the beginning.

Shinji: But there are some unfamiliar parameters such as the number of uses and damage bonus.

Asuka: Right. The number of uses means if you make a decision to use that weapon, the number of times it can be used will be reduced by one, whether the attack succeeds or fails. And when the number of uses reaches 0, the weapon is spent.

Rei: When your weapons are depleted, you can't attack with them.

Asuka: Don't take people's lines.

Shinji: Okay. What's the damage bonus?

Asuka: For example, let's say you succeed with a Positron Rifle attack. At that time, the damage dealt to the opponent is +5. This is the damage bonus of the Positron rifle. So, if you were played the ♣ 8 card for attack determination, with the +5 damage bonus you would deal 13 points of damage.

Shinji: I see.

Asuka: The exception to this is the shield. It does not deal damage, but instead absorbs the damage that came to you. But it's also pretty heavy. The caveat is that you can only attack with the weapons you have equipped. No matter how much ♣ you have, you can't play that card without a long-range weapon. Think about that when you choose your weapon. The power of the "Large Positron Rifle" is amazing, but it only shoots one shot.

Shinji: The only equipment with no restrictions is the progressive knife which is a melee attack.

Asuka: Obviously. And of course hand-to-hand, which is any attack that uses the EVA itself. Next let's talk about combat.

■ Power relationship between combat method and combat skill

When an Eva battles an Angel (or an Eva fights another Eva in some cases), even if it is a battle between 1 Angel and 3 Eva, the battle will always be judged 1:1. In other words, once the Angel vs. Unit 01 is resolved, then the Angel vs. Unit 02 occurs, then the Angel vs. Unit 00.

When there are multiple combatants taking on one enemy, play begins on the GM's left and goes in clockwise order.

The method of resolving the battle is as follows.

1. First of all, the EVA players and the GM representing the Angel should choose the cards they want to use and form a hand, not revealing them to their opponents yet.

2. When all players have chosen their cards, the first pair of opponents place them on the table at once and compare results.

Close combat ♠ wins over long-distance battle ♣.

The long-distance battle ♣ wins over a counter attack ◇.

Counter attack ♦ wins over close quarters ♠.

If the suits played are the same, the opponent with the higher combined skill and card value wins.

If the suit and total value are the same, the opponent with the higher card number wins.

3. The losing player receives damage from the winning player's attack. When a counter attack wins, the damage of the attack is bounced back on the attacker.

4. You lose if your HP goes below 0.

When the action returns from GM's left side to the GM's right side, one turn ends.

Asuka: From the left side of GM, Eva 1 action → Eva 2 action → Eva 3 action → And GM (Angel) action make one full turn. Oh, and this example is for when there are three players.

Shinji: So, resolving the battle with the card suits is sort of like “rock, paper, scissors.”

Asuka: That's right. But it's more advanced than rock-paper-scissors because it requires more strategy and planning, as well as luck. Because you're using playing cards, the strategy of guessing your opponent's hand becomes important.

Shinji: Guess your opponent's hand... can you do that?

Asuka: It's easy. Okay, maybe not easy, but you can figure out some information. There are a limited number of playing cards. Therefore, unless the discarded cards are shuffled back into the stack again, the cards used will never come up again.

Shinji: Uh, okay.

Asuka: If you look at the cards that you own and if the other players share what cards they're holding, you can narrow down what kind of cards the Angel probably has. The same can be said for GM. The GM knows what equipment the player has chosen, so

conversely, he can infer what cards the player has based on the equipment.

Shinji: Hmm...I see.

Asuka: Well, then it's fair. When you narrow down the information to each other, you can predict how the other party will move. That's why a shield, like the First used that time, may be a surprising advantage in some games.

Shinji: The shield...

Rei: ...

Asuka: Well, it might be more difficult to play with a character who doesn't talk so much.

■ If you run out of cards

If all of your cards are gone and you can't (or don't want to) replenish them using MP, all battle-related numbers are "1".

For Players that have no more cards in their hand, remove the ◇ cards from the discard pile one by one and use them as a hand. In this case, no matter how big the number on the card is, it is treated as "1".

When MP is restored by some event or when cards can be replenished again at the discretion of the GM, please return the ◇ cards taken from the discard card pile to the discard pile again.

Shinji: I know all the numbers are 1, so why do you bother holding a card?

Asuka: If you don't have a stupid card, you can't have competition with your opponent. What kind of fight would it be if you couldn't flip cards over against your opponent?

Shinji: Oh, right.

Asuka: It's really stupid that you don't even know that.

■ **How to use MP and ♥ cards**

At the end of your turn, you can choose one of the following actions to take before entering the next turn.

1. You can draw 1 card from the stack by consuming 3 MPs (you can do this multiple times).
2. By using the ♥ card, you can recover as many MPs as that number (only once per turn)
3. You can recover 2 HP by consuming 1 MP. The target can be any EVA, yours or a fellow player's (you can do this multiple times).
4. You can exchange one piece of equipment for a new one by spending 15 MP. This can also be done during battle. This can be done only once per turn.
5. By consuming 1 MP, you can add 3 to the number on the card This can also be done during battle. (only once per turn).
6. By consuming 3 MPs, you can change your suit to your favorite one. This can also be done during battle. (only once per turn).

Asuka: That was the last set of rules about combat. Players who just want to enjoy the battle between the EVAs and the Angels don't need to read any further.

Shinji: But the GMs should read on to learn about Angels and how to create them.

Asuka: Well, right. So, the points to be aware of in this last section are... You can do actions 1 and 3 multiple times. For example, you can draw more cards or recover more HP by spending more MP.

Shinji: That makes sense.

Asuka: But that doesn't mean you can do all the actions. For example, you can consume five MP at a stroke and recover 10 HP. But you can't divvy up the remaining MP to do other things.

Rei: In other words, the player must choose the amount of MP consumed and put it into one thing. Like you can use 15 MP to replenish 5 cards at once, but that would be all.

Shinji: Right? What is written here is the amount of MP needed to perform an action.

Asuka: Exactly. Also, it is not possible to duplicate some actions. Number 5 may sound attractive because of the low cost, but it can only be able to be done once. If the attack is successful, though, that 1 MP will cause 3 more damage to your opponent.

Shinji: Number 5 is only 1 MP...Is it okay to consume it after the battle result is achieved? I think it would be smarter if you consumed it after winning the battle.

Asuka: That would be cheating. You have to commit to using the MP for numbers 5 and 6 before the decision. In other words, you have to declare it before the cards are played. Jeez.

Shinji: I'm sorry.

■Effect of event occurrence cards

When you draw a card using MP, if the card is an Ace (A), it has a special effect. If you draw an Ace, tell the GM immediately and act according to the table below.

● For Shinji

- ♠ A is drawn... Everyone's HP is fully recovered.
- ♦ A is drawn... Eva runs out of control for 5 turns. The GM randomly chooses a target each turn with a die, and inflicts 10 damage to that target.
- ♥ A is drawn... The player's MP is fully restored.
- ♣ A is drawn... The player can reselect one item of equipment.

● For Rei

- ♠ A is drawn... The player's HP and MP are completely restored.
- ♦ A is drawn... That player will always "win" the attack on the next turn.
- ♥ A is drawn... Eva runs out of control for 5 turns. The GM randomly chooses a target each turn with a die, and inflicts 8 damage to that target.
- ♣ A is drawn... The player's MP is fully restored.

● For Asuka

- ♠ A is drawn... Eva runs out of control for 5 turns. The GM randomly chooses a target each turn with a die, and inflicts 9 damage to that target.

- ◆ A is drawn... You can reselect all equipment.
- ♥ A is drawn... The player's HP is fully restored.
- ♣ A is drawn... The player can reselect one item of equipment.

Asuka: The thing that needs explaining here is probably the EVA going berserk.

Shinji: That's right. I think we need to explain that.

Asuka: Well, the runaway starts on the turn when you draw the card. The GM randomly selects a target for the EVA to attack ranging from the Angel to the other EVAs by rolling a die. This attack always hits and will always do 8-10 damage.

Shinji: Is it possible to attack the runaway EVA?

Asuka: Of course, the other EVAs can attack. In that case, the attack is resolved normally, but after each attack, you will automatically receive 8 to 10 points of damage in response. In the worst case, you'll lose the attack roll, do no damage and still take the automatic damage. If you're not careful it could kill you in one shot.

Shinji: How exactly do you know which target the runaway EVA should attack? Is it the same each turn?

Asuka: Let's take a detailed look... The target of the runaway EVA should be decided every turn. When deciding randomly, the dice 1 to 3 are for the Angel, 4 and 5 are for the fellow EVAs, and 6 is NERV headquarters. Oh, I will add that if the runaway EVA is armed with equipment, the number of times it can be used will reset to the original number at the beginning of the runaway.

■ Acting as the Character

There are no restrictions on how players should play their characters. In simplest terms, the GM prepares a series of events and the characters react to those events.

However, playing the characters in a group setting for the first time can be a daunting task, so it's a good idea to introduce the players to the characters through the solo play scenario presented in this book first. The "three people living together" scenario can allow players a chance to get used to the game and get comfortable acting as the characters.

Also, if the GM does not have time to fully prepare an adventure, it is relatively easy to adapt already-made materials such as episodes from the tv series and from the "solo play" events.

Asuka: Well, the game doesn't put any restrictions on how you play the characters. That's why you can do anything.

Shinji: Even if you're told that you can do anything... you'll probably still wonder if you're doing it right.

Asuka: Of course. So, at first, I recommend taking the attitude "well, this is the way they were on TV but that was then and this is now!"

Shinji: What do you mean?

Asuka: I mean, it was mentioned in the description that the GM can adapt episodes of the TV series or the solo play. But even though you're playing in the same situation, just like it was on TV, that doesn't mean in the Table Talk you have to do the same things. You can try other solutions out.

Shinji: I see. Then you can easily create a whole new story.

Asuka: I don't know if the story will come out differently or not. But it's certainly the simplest way. Especially for the solo play scenario, Event 1.

Shinji: That's the event when Ayanami came to our house.

Asuka: Right. This is a very easy situation to play in multiplayer. For example, maybe the GM doesn't read the part where we have to decide where the First is going to sleep, but starts letting the players make other choices right after the part where "the First is standing at the door."

Shinji: Really? Then, the die roll itself could be for something entirely different.

Asuka: Exactly. In solo play, I struggled with sharing a bedroom with the First, but this event in multiplayer may not be about that. For example, another more intense event might happen...

Shinji: For example?

Asuka: Like you make a fuss when you walk in on the First taking a shower.

Shinji: What the hell? Asuka and Misato never saw that.

Asuka: That was just an example.

Rei: But it did happen before.

Shinji (Hurrying to block Rei's mouth): Wow! Oh, Ayanami...

Asuka: Shinji?

Shinji: Nothing Asuka. Let's explain the next part!

Asuka: Shinji, are you telling me you actually saw the First taking a shower?

Shinji: It was an accident!

Asuka: I see. Hey, Shinji.

Shinji: Um, yes?

Asuka: What kind of behavior should I have in multiplayer when it comes to such situations?

Shinji: I don't know.

Asuka: But I do... the answer is: "What the hell kind of pervert are you!?"

■ Card bonus

When playing a character, if the GM determines that the player has played the character particularly well, the player can draw a card from the stack and add it to his or her hand. However, you can receive this bonus only when the GM determines that you have acted appropriately for the character.

This bonus should not be given to characters whose behavior largely deviates from the character such as if Shinji pushes his opinion through when he has a conflict with another person or Rei speaks to other characters in anything but a businesslike way or if Asuka has a conflict with another person, then meekly withdraws from the situation for any reason other than a direct order.

Shinji: That sounds pretty simple.

Asuka: Are you kidding? It's fantastic!

Shinji: What do you mean? Why?

Asuka: Because now when I call you an "idiot" I can get a bonus just for playing myself. Hey, Shinji, do you think the First can communicate with other people beyond greetings and dry clinical talk?

Rei: "..."

Shinji: Ayanami? Well, I saw her smile while she was talking to my father once.

Asuka: She hasn't said anything expressive to you? What about that time you saw her naked?

Shinji: Yeah, no... Well, that's not exactly communication. It was something a little different.

Asuka: Idiot.

Shinji: Sorry.

Asuka: Why are you apologizing? That was perfect! That is exactly what you're supposed to do. Communication is more than just talking about the rules or what's happening in the game. It can be as simple as "What, are you stupid?"

Shinji: That's communication?

Asuka: "That's great communication.

Shinji: So, Rei I guess what you and I did that time would be communication...

Rei: What did we do?

Shinji: What? No, it was nothing.

Asuka: And what exactly did you two do? I can't imagine the First just said "Uhhh, Shinji-kun good morning ♥".

Shinji: Yeah.

Asuka: Just because it's easy, don't assume it's an easy bonus. You should only be able to get 2 to 4 cards in total in one game. Oh, and if there's ever a conflict where a player tries to compel the GM by saying, "That was artfully played, now give me a bonus," it's the GM's choice not the player's right.

Shinji: Surprisingly...that's actually pretty deep.

■ NERV Headquarters HP

Depending on the scenario, NERV headquarters may be exposed to attack by the Angel.

In that case, the Angel will approach NERV and attempt to inflict the maximum damage it can once per turn. In this case, the Angel does not use any cards and always treats the card number as 5. The HP of the NERV headquarters is 50, and when it reaches 0, NERV headquarters is destroyed and the game is over.

Asuka: Well, that's pretty straightforward. The Angel does not need to use a card to attack NERV HQ, and the number used for attacking is always 5.

Shinji: Um... okay. How exactly does that work.

Asuka: Let me give you an example. If it was an EVA attacking NERV headquarters with a Positron Rifle, the attack power of the Positron Rifle adds +5 damage. So, the number used is always 5, then the sum is 10. In other words, an EVA equipped with a positron rifle can destroy the NERV headquarters and Tokyo 3 in 5 turns.

Shinji: The EVA seems like it could destroy it in hardly any time.

Asuka: Don't be stupid! NERV Headquarters wouldn't be in the game if it was done so easily. You should use your head a little.

Shinji: I'm sorry. But then... what if the Angel was focused on something like the MAGI? And it took the Angel who fought for the second time almost 20 hours to break into NERV.

Asuka: You're too inflexible! The rules of a Table Talk are not "absolute". Whether it's the Angel or another enemy doing the

physical destruction, the GM can play around with the rules a bit to make the game more exciting.

Shinji: Is that so?

Asuka: Yeah! Otherwise, why would humans play games at all? All you need is brains, imagination, and flexibility. That's my game philosophy!

Rei: But the philosophy is different for each person.

Asuka: Hey... don't try to confuse me.

■ When HP becomes 0

When an EVA's HP reaches 0, the character does not necessarily die. However, once the HP has reached 0, the EVA will be so damaged that it cannot be repaired immediately, so it will no longer be possible to revive it on the battlefield using MP.

The GM will determine how long it will take to repair the EVA and if the pilot is injured.

Asuka: The most important point here is that "once HP reaches 0, you cannot revive the EVA using MP." The rest is a matter for the GM to judge based on the situation, so I can't tell you anything more.

Shinji: I wonder if MP can still be used for other things.

Asuka: That's hard to say. The situation, the inventiveness of the player and the personal thoughts of the GM should dictate.

Shinji: Hmm, that makes sense.

■ End of combat and card replenishment

Battles on the EVA will end when any of the following conditions are met:

1. The goal to defeat or repel the enemy is met (mainly an Angel)
2. All EVA Units are wiped out or withdrawn

If you finish the battle under condition 1, but the scenario does not end there, each player can draw 5 cards from the pile and reselect new equipment. If you draw an Ace at this time, return that card to the pile and draw a new card in its place.

Exhausted HP will not be recovered, so if an EVA is damaged, you can use your own MP to restore it.

In addition, MP will be recovered by 1 point every day of in-game time.

Asuka: Hmm... I don't really need to explain this.

Shinji: Yeah. But I'm not sure exactly what to do under condition two.

Asuka: Well, repair your EVA as soon as possible after the battle. And change equipment and if the game scenario is still continuing, prepare for the next battle.

■ End of the game

The game ends when one of the following conditions is met:

1. When the scenario prepared by the GM ends
2. When all the EVAs are annihilated
3. When the NERV headquarters is destroyed

Asuka: There's no need to explain anything here. The only goal the player should aim for is to achieve ending 1. Endings 2 and 3 must be avoided.

Shinji: I don't think anybody is willing to just let 2 or 3 happen.

Asuka: Of course. Now, our commentary is finally complete. The last is the GM part!

5. GM Part

■ How to make an Angel

In this game, combat can't happen without an Angel (well, fighting between the EVAs is also possible as well as other threats). Before starting the game, the GM should decide on an Angel to use.

The GM should use the following data for creating original Angels.

● Angel Data

1. Name

The name of the Angel. Since it is not absolutely necessary data, you can leave it as "unknown" if you cannot think of a name.

2. Form

This is the shape of the Angel. Please decide the form of the Angel, such as human type, octopus-type, conical-type.

3. Number of cards

The number of cards the Angel has from the beginning. The number of players x 5 will be the standard. Of course, the more there are, the stronger the Angel is.

4. Close combat level • Long range combat level • Counter level

The same data as the EVA's combat skills of the same name. The Angel's strength should be based on the EVAs. Make it weaker or stronger to suit the situation.

5. Close Combat Damage • Long Range Combat Damage

This is the damage modifier when the attack hits. Please be aware that if this number exceeds +15, the Eva may be destroyed with a single blow.

6. HP and MP

You can think of HP as the number of players x25 and MP as the number of players x6. Of course, if the number is higher than this, it will be a strong Angel. The usage of MP is the same as for an EVA.

7. Other special skills and weaknesses

The Angel's special skills vary. It's a good idea to come up with something unique as long as the game balance is not greatly affected.

Asuka: It's important to explain how to make our enemies the Angels strong and memorable!

Shinji: I don't want to explain that!

Asuka: What do you mean? We need strong enemies in order to be successful. Ideally, an opponent that's up to my high abilities is ideal. That way it's a knock down drag out fight that comes right down to the wire and we win by a nose at the end!

Shinji: That's messy.

Asuka: That kind of messy Angel is the most ideal. Well, I think the best piece of advice is to try to achieve a total balance.

Shinji: Total balance?

Asuka: I mean, the overall balance. If 3, 4, 5, and 6 are set too high numbers in order to make a strong Angel, it's not such a big deal, but it all adds up. Therefore, instead of likewise increase the other attributes, consider reducing the HP or the number of cards the Angel has, or weakening the close combat or the long-range attack, such a sense of balance is important.

Shinji: Balance...

Asuka: And part of the power the GMs have, they can also balance it by limiting the cards in the Angel's hand. That can do a lot too.

Shinji: Isn't that unfair?

Asuka: That's not true. It's a way to balance the game. It could just be one of the characteristics of the Angel.

Rei: But some people might think it's cowardly.

Asuka: Hey, don't be such a hard-headed guy. You just have to stop. The GM could also just increase the number of cards it has too.

Shinji: But this data cannot reproduce the data of the Angel that invaded the MAGI.

Asuka: Well, that's where the "other" data from 7 comes in. But some things are just too difficult to replicate in any game. Such an original ability is something each GM has to think about.

Shinji: Hmm, is that so?

Asuka: Right. Next let's look at some example Angels and their data, followed by our last commentary. Let's go!

■ Angel Examples

The following examples show how to create original Angels for use in the game. The GM should use these as guides for creating new Angels and balancing them for the number and experience of the players.

If you are playing the game for the first time, or if you did not have time to make an Angel, please use or modify one of these. There are two Angels for two players and three Angels for three players.

Moruel (for two players)

1. Moruel
2. Humanoid
3. 9 cards
4. Close combat level: 3 Ranged combat level: 1 Counter level: 4
5. Close combat damage: +2 Long range combat damage: +1-
6. HP: 40 MP: 10
7. None

Remark: This is an Angel who is fairly weak. If you use it against two EVAs, the EVAs should not lose unless they have very bad luck with the cards drawn.

Barsiquiel (for 2 players)

1. Barsiquiel
2. Humanoid
3. 12 cards
4. Close combat level: 7 Ranged combat level: 1 Counter level: 6
5. Close Combat Damage: +7 Long Range Combat Damage: +1
6. HP: 52 MP: 8
7. None
8. Note: The shape of this Angel is humanoid, but with four hands. It is very strong in close combat, so it's better if the EVA's have about 6 ♠ cards (numbers between 2 and 10). Of course, the weak point in this case is its counter attack at long range.

Maelstrom (for 3 players)

1. Maelstrom
2. Two-dimensional plane
3. 14 cards
4. Close Combat Level: 1 Ranged Combat Level: 1 Counter Level: 1
5. Close Combat Damage: Special Long Range Combat Damage: Special
6. HP:105 MP:0

7. The damage modifier when the Angel wins the attack is the same as the weapon used by the attacking EVA at that time.

Remark: Just like the Angel who confined Shinji in the imaginary space, this Angel is only shadow. Is it better to limit attacks to the EVA's hand-to-hand ability when attacking the Angel? Perhaps, because if you lose the battle, the damage bonus from your equipment will bounce off and the HP damage you take will be high.

EVA Unit 03 (for 3 players)

1. Eva Unit 03
2. Humanoid
3. 15 cards
4. Close combat level: 6 Ranged combat level: 6 Counter level: 6
5. Close combat level: 6 Close combat damage: +9 Long range combat damage: +2
6. HP:90 MP:20
7. None.

Remark: The data for Eva Unit 03 and Touji had been incorporated. If you look at it, it is strong both against close and ranged combat. Unit 00 and Unit 02 cannot defeat it alone. If you fight it, you should challenge it with at least 2 Units.

Fozuel (for 3 players)

1. Fozuel
2. Sphere
3. 18 cards
4. Close combat Level: 1 Ranged combat level: 10 Counter level: 5
5. Close Combat Damage: +1 Long Range Combat Damage: +8
6. HP: 120 MP:10
7. Pallet Guns do double the damage to this Angel.

Remark: It is a type of Angel that rotates at high speed and shoots out waves of energy. This Angel has an unusually high HP, but it is susceptible to a Palette Gun because it is weak against depleted uranium. The damage is doubled and it has a weak point. If you play up this weakness during the scenario, you will be able to incorporate it into the game. (Example: The Angel does not approach the old nuclear power plant)

■ Play guidelines

This last part is a simple tip for playing.

The characters in Evangelion, in this case the player characters of this game, are quite unique. Therefore, even people who normally play table talk games may feel confused at how to play them initially

This is particularly true for Shinji who doesn't stand up for himself and Rei, who is shrouded in mystery. They will not be able to play an active role unless you create a situation to help them act.

Therefore, the GM should take this into consideration in each scenario. For example, tell Shinji, "If you do not do your best, the school (Touji and Kensuke) will be in danger", or tell Rei "This is an order from Commander Ikari." Try to create a natural reason for the characters to be motivated to do things that is organic to the situation.

If the game begins to stagnate, as a last resort you can always call in the Angel. Forcing the characters to rush into battle is a greater way to bring the energy and excitement up.

Asuka: This is where out commentary ends! The mission is over!

Shinji: Whew. I'm glad we finished safely.

Asuka: You can thank me. The reason why this commentary was successful is largely due to my presence!

Shinji: That's right. Looking back, Asuka, we couldn't have done it without you.

Rei: (claps with no expression)

Asuka: So now it's your turn to actually play! I've told you everything there is to know, so enjoy yourself! That's all I have to say. Alright you two can say goodbye now.

Shinji: Ah, um... everyone, please enjoy Evangelion.

Asuka: Why would you say such a boring goodbye at the end!?

Shinji: I'm sorry.

Asuka: Whatever. Alright First, your turn.

Rei: Well then? Goodbye.

Asuka: What is it with you two? At least put a little effort into your parting remarks!



Reference

Weapons list

●Melee weapons

Hand-to-Hand (Number of uses: unlimited)

Damage: Card modifier ±0

Progressive Knife (Number of uses: unlimited)

Damage: Card modifier +1

Sonic Glaive (Number of uses: 4/0000)

Damage: Card modifier +3

Smash Hawk (Number of uses: 3/000)

Damage: Card modifier +5

● Ranged weapons

Pallet Gun (Number of uses: 6/000000)

Damage: Card modifier +1

Positron Rifle (Number of uses: 3/000)

Damage: Card modifier +5

Large Positron Rifle (Number of uses: 1/0)

Damage: Card modifier +15

● Armor

Shield

Number of uses: Until it breaks

HP: 20/	00000	00000
	00000	00000

Shinji's Reference Card for Multiplayer (Page 1 of 2)

■ Shinji's Skills

● General housework

This is the skill for general housekeeping chores such as cooking, cleaning and washing.

● Willpower

This is a skill that allows you to bolster your own will or wear down the will of another person. In the case of Shinji, this skill is negative, so it is treated as a weakness.

■ Role of playing cards

♠...Use these cards during melee combat. If you don't have a ♠ card when you engage in melee combat, the number will automatically be 1.

♣... Use these cards during ranged combat. If you don't have a ♣ card when you engage in ranged combat, the number will automatically be 1.

♦...Use these cards to make a counter attack. If you don't have a ♦ card when you engage in a counter attack, the number will automatically be 1.

♥.....Use these cards to restore consumed MP to the value of the card. However, the MP can never exceed the original number.

■ Combat skill powers

● Melee combat ♠ outweighs ranged combat ♣ when in direct conflict.

● Ranged combat ♣ outweighs counter attacks ♦ when in direct conflict.

● Counter measures ♦ outweigh melee ♠ when in direct conflict.

● If the suits played are the same, the card with the higher total added to the combat skill value wins.

● If the suit and total value are the same, the player holding the highest number of cards wins.

Shinji's Reference Card for Multiplayer (Page 2 of 2)

■ How to use ♥ with MP

*When 1 turn is over, you can choose one of the following actions and take the action before entering the next turn.

- You can draw 1 card from the stack by spending 3 MPs (this can be done multiple times).
- You can recover 2 HP by spending 1 MP. The target to be recovered may also be an EVA of another player (this can be done multiple times).
- By consuming 15 MP, you can exchange one piece of equipment for a new one.
- By using ♥, you can recover as many MPs as show on the value of the card (only once per turn).

* During battle, MP can be spent to cause one of the following effects:

- By consuming 1 MP, you can increase the number on the current card by 3 (only once per turn).
- You can change the suit to the suit of your choice by spending 3 MPs.

■ Shinji's Events for pulling an Ace

- ♠ Ace is drawn... Everyone's HP is fully restored.
- ♦ Ace is drawn... The EVA runs berserk for 5 turns. The GM randomly selects a target each turn with a die. The berserk EVA inflicts 10 HP of damage to that target.
- ♥ Ace is drawn... Your MP is fully restored.
- ♣ Ace is drawn... You can reselect one piece of equipment.

Character Sheet

Player Name

Character Name

Shinji Ikari

Attribute Value

B: Body	7
M: Mental	7
T: Technique	8



HP: 30 MP Change

MP: 15

Skill	Level	Attribute	Total
Housework	4	Technique 8	12
Willpower	-2	Mental 7	5

Combat	Level	Suit	Total
Melee	5	♠	/
Ranged	4	♣	/
Counter	6	♦	/
			/

Solo Play Data

Check Marks	Friendship	Cards																
①②③④⑤⑥⑦	<table border="1"> <tr> <td>Rei</td> <td>1</td> <td>2</td> <td>3</td> <td>4</td> <td>5</td> <td>6</td> <td>7</td> </tr> <tr> <td>Asuka</td> <td>1</td> <td>2</td> <td>3</td> <td>4</td> <td>5</td> <td>6</td> <td>7</td> </tr> </table>	Rei	1	2	3	4	5	6	7	Asuka	1	2	3	4	5	6	7	①②③④⑤⑥⑦
Rei	1	2	3	4	5	6	7											
Asuka	1	2	3	4	5	6	7											

Rei's Reference Card for Multiplayer (Page 1 of 2)

■ Rei's skills

- Calmness

This skill allows a character to analyze a situation calmly without losing focus under stress. With this skill, you will be able to resist provocation from other people, emotional stress, etc. It can also be used to defend against anyone using Willpower trying to make you do something.

■ Role of playing cards

♠ ...Use these cards during melee combat. If you don't have a ♠ card when you engage in melee combat, the number will automatically be 1.

♣ ... Use these cards during ranged combat. If you don't have a ♣ card when you engage in ranged combat, the number will automatically be 1.

♦ ...Use these cards to make a counter attack. If you don't have a ♦ card when you engage in a counter attack, the number will automatically be 1.

♥Use these cards to restore consumed MP to the value of the card. However, the MP can never exceed the original number.

■ Combat skill powers

- Melee combat ♠ outweighs ranged combat ♣ when in direct conflict.
- Ranged combat ♣ outweighs counter attacks ♦ when in direct conflict.
- Counter measures ♦ outweigh melee ♠ when in direct conflict.
- If the suits played are the same, the card with the higher total added to the combat skill value wins.
- If the suit and total value are the same, the player holding the highest number of cards wins.

Rei's Reference Card for Multiplayer (Page 2 of 2)

■ How to use ♥ with MP

*When 1 turn is over, you can choose one of the following actions and take the action before entering the next turn.

- You can draw 1 card from the stack by spending 3 MPs (this can be done multiple times).
- You can recover 2 HP by spending 1 MP. The target to be recovered may also be an EVA of another player (this can be done multiple times).
- By consuming 15 MP, you can exchange one piece of equipment for a new one.
- By using ♥, you can recover as many MPs as show on the value of the card (only once per turn).

* During battle, MP can be spent to cause one of the following effects:

- By consuming 1 MP, you can increase the number on the current card by 3 (only once per turn).
- You can change the suit to the suit of your choice by spending 3 MPs.

■ Rei's Events for pulling an Ace

- ♠ Ace is drawn... Both your HP and MP are fully restored.
- ♦ Ace is drawn... You will always "win" the attack on the next turn.
- ♥ Ace is drawn... The EVA runs berserk for 5 turns. The GM randomly selects a target each turn with a die. The berserk EVA inflicts 8 HP of damage to that target.
- ♣ Ace is drawn... Your MP is fully restored.

Character Sheet

Player Name

Character Name
Rei Ayanami

Attribute	Value
B: Body	5
M: Mental	9
T: Technique	8



HP:	26	MP Change
MP:	13	

Skill	Level	Attribute	Total
Calmness	5	Mental 9	14

Combat	Level	Suit	Total
Melee	4	♠	/
Ranged	4	♣	/
Counter	5	♦	/
			/

Solo Play Data

Check Marks	Friendship	Cards																
①②③④⑤⑥⑦	<table border="1"> <tr> <td>Shinji</td> <td>1</td> <td>2</td> <td>3</td> <td>4</td> <td>5</td> <td>6</td> <td>7</td> </tr> <tr> <td>Asuka</td> <td>1</td> <td>2</td> <td>3</td> <td>4</td> <td>5</td> <td>6</td> <td>7</td> </tr> </table>	Shinji	1	2	3	4	5	6	7	Asuka	1	2	3	4	5	6	7	①②③④⑤⑥⑦
Shinji	1	2	3	4	5	6	7											
Asuka	1	2	3	4	5	6	7											

Asuka's Reference Card for Multiplayer (Page 1 of 2)

■ Asuka skills

● Dexterity

This is a skill related to moving the body such as jumping and balancing. If you need strength, use body-based numbers, and if you need agility or accuracy, use technique-based numbers.

● Willpower

This is a skill that allows you to bolster your own will or wear down the will of another person.

● Calmness

This is a skill for analyzing situations calmly without losing focus under stressful conditions. However, Asuka has this as a weakness, so it is subtracted from her Mental attribute under certain situations.

■ Role of playing cards

♠...Use these cards during melee combat. If you don't have a ♠ card when you engage in melee combat, the number will automatically be 1.

♣... Use these cards during ranged combat. If you don't have a ♣ card when you engage in ranged combat, the number will automatically be 1.

♦...Use these cards to make a counter attack. If you don't have a ♦ card when you engage in a counter attack, the number will automatically be 1.

♥.....Use these cards to restore consumed MP to the value of the card. However, the MP can never exceed the original number.

■ Combat skill powers

● Melee combat ♠ outweighs ranged combat ♣ when in direct conflict.

● Ranged combat ♣ outweighs counter attacks ♦ when in direct conflict.

● Counter measures ♦ outweigh melee ♠ when in direct conflict.

● If the suits played are the same, the card with the higher total added to the combat skill value wins.

● If the suit and total value are the same, the player holding the highest number of cards wins.

Asuka's Reference Card for Multiplayer (Page 2 of 2)

■ How to use ♥ with MP

*When 1 turn is over, you can choose one of the following actions and take the action before entering the next turn.

- You can draw 1 card from the stack by spending 3 MPs (this can be done multiple times).
- You can recover 2 HP by spending 1 MP. The target to be recovered may also be an EVA of another player (this can be done multiple times).
- By consuming 15 MP, you can exchange one piece of equipment for a new one.
- By using ♥, you can recover as many MPs as show on the value of the card (only once per turn).

* During battle, MP can be spent to cause one of the following effects:

- By consuming 1 MP, you can increase the number on the current card by 3 (only once per turn).
- You can change the suit to the suit of your choice by spending 3 MPs.

■ Asuka's Events for pulling an Ace

♠ Ace is drawn... The EVA runs berserk for 5 turns. The GM randomly selects a target each turn with a die. The berserk EVA inflicts 9 HP of damage to that target.

♦ Ace is drawn... You can reselect two pieces of equipment.

♥ Ace is drawn... Your HP is completely restored.

♣ Ace is drawn... You can reselect one piece of equipment.

Character Sheet

Player Name

Character Name
Asuka Langley Souryu

Attribute	Value
B: Body	6
M: Mental	11
T: Technique	9



HP:	28	MP Change
MP:	14	

Skill	Level	Attribute	Total
Dexterity	3	Body 6	9
Dexterity	3	Technique 9	12
Willpower	3	Mental 11	14
Calmness	-4	Mental 11	7

Combat	Level	Suit	Total
Melee	6	♠	/
Ranged	5	♣	/
Counter	4	♦	/
			/

Solo Play Data

Check Marks	Friendship	Cards																		
①②③④⑤⑥⑦	<table border="1"> <tr> <td>Rei</td> <td>▽</td> <td>1</td> <td>2</td> <td>3</td> <td>4</td> <td>5</td> <td>6</td> <td>7</td> </tr> <tr> <td>Shinji</td> <td>△</td> <td>1</td> <td>2</td> <td>3</td> <td>4</td> <td>5</td> <td>6</td> <td>7</td> </tr> </table>	Rei	▽	1	2	3	4	5	6	7	Shinji	△	1	2	3	4	5	6	7	①②③④⑤⑥⑦
Rei	▽	1	2	3	4	5	6	7												
Shinji	△	1	2	3	4	5	6	7												

Fujimi
**DRAGON
BOOK**

277

**Neon Genesis Evangelion RPGI
Angel Approaches!**

May 30, 1997 First Printing
Orange Jelly / Deep Sea Workshop

Distributed by Fukuda

Published by Fujimi Shobo

1-12-14 Fujimi, Chiyoda-ku, Tokyo

Sales Department 03(3238)8531

Editorial department 03(3238)8588

102 Transfer 00170-5-86044

Printing house = Asahi Printing

Bookbinding = Otani Bookbinding

DESIGN STUDIO WIDE

PRINTED IN JAPAN

ISBN4-8291-4335-5 C0176

©1997 GAINAX/Project Eva, TV Tokyo, NAS

© 1997 SHINKAI KOUBOU/Fujimi Shobo

We will replace a damaged book

The list price is specified on the cover



Fujimi Dragon Book

MAGIUS Start Book

Fujimi Library

Do you want to experience a heart-pounding adventure like a hero in a fantasy novel or what it would be like to be a character in an anime or comic book? Have you ever thought about that? ``MAGIUS" can fulfill your desires. Infinite possibilities expand from one basic set of rules... Now, a new world of RPG adventure begins!



Fujimi Dragon Book

Neon Genesis Evangelion RPG Decisive Battle! Tokyo 3

Orange Jelly / Deep Sea Workshop

The RPG of the popular anime "Neon Genesis Evangelion" is finally here. In the year 2015 in the Angel's attack. Mankind faces an unprecedented crisis. Humanity attempts to counter the Angels who cannot be defeated by conventional weapons. The only hope is the humanoid shaped weapon "Evangelion"! This is an RPG that faithfully simulates the fierce battles between the EVAs and the Angels. Protect Tokyo 3 from Angel attack!

To play "Neon Genesis Evangelion RPG", a "MAGIUS Start Book" is required.



Fujimi Dragon Book

Magical Girl Pretty Sammy RPG

Orange Jelly / Deep Sea Workshop

The TV anime "Magical Girl Pretty Sammy" is now available as an RPG! This game includes a solo play option that allows you to play alone and a battle RPG mode that lets you play with a group.

Become Magical Girl Sammy, solve the mystery and restore the "Gemini balance". The Magical Girl Pretty Sammy RPG battle game realistically reproduces the story of the TV series. An incandescent magical battle is about to begin!

To play "Magical Girl Pretty Sammy RPG", a "MAGIUS Start Book" is required.



9784829143353

ISBN 4 - 8 2 9 1 - 4 3 3 5 - 5

C0176 ¥580E

Price: JPY 580 (subject to tax)



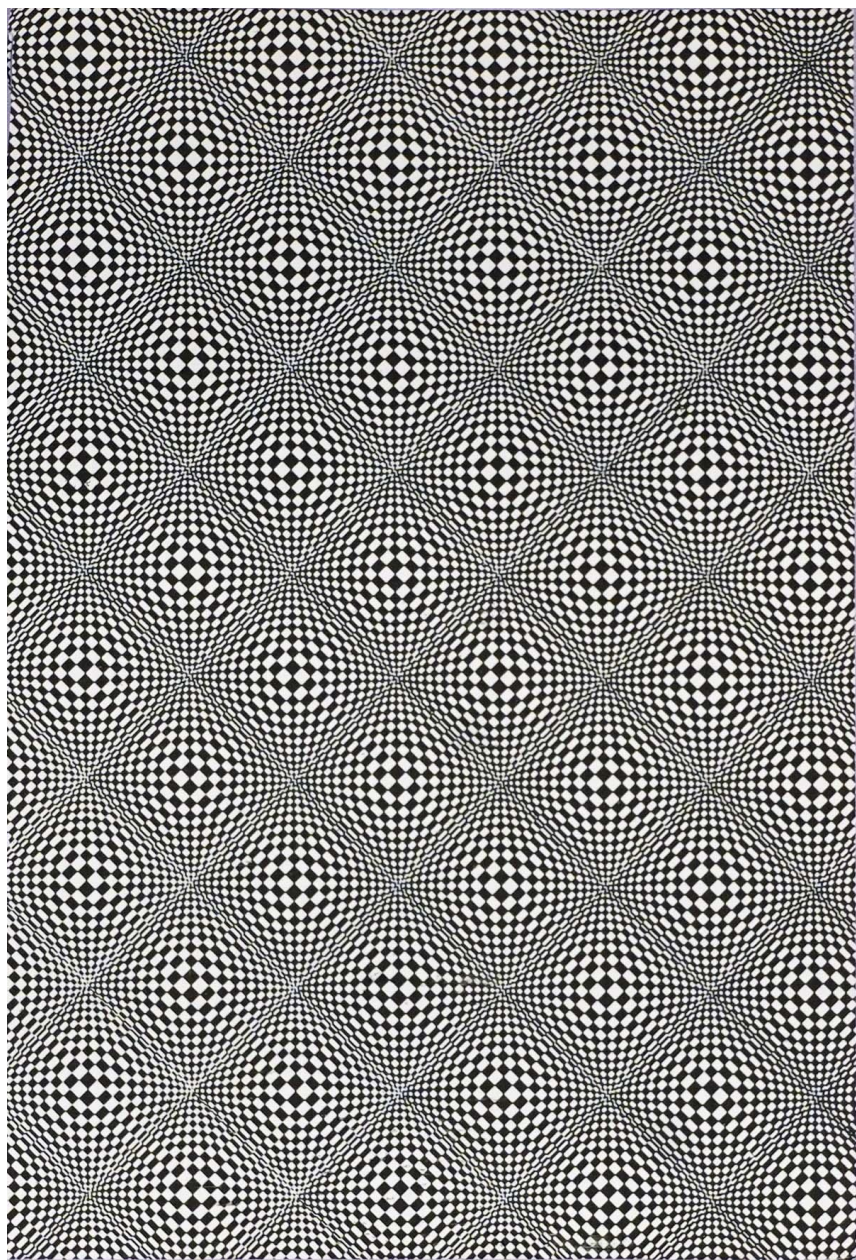
1920176005809

One rule, unlimited possibilities.



This is where you start an RPG game for the popular anime "Neon Genesis Evangelion." Become an EVA pilot and solve events that occur in the city of Tokyo 3. From the hustle and bustle of life spent with Misato, to dynamic battles against the Angels, Evangelion is full of charm. Experience piloting your own EVA!

To play the "Neon Genesis Evangelion RPG!" you will need a "MAGIUS Start Book".



Fujimi Dragon Book reader card

Thank you for your subscription. Please complete the questionnaire below. We will use it as a reference for future projects.

Title of this book

- **How did you find out about this book?**
 1. Saw it in a newspaper/magazine (Journal name:)
 2. Saw it at the bookstore
 3. Recommended by people
 4. Other ()
- **What was your reason for purchasing?**
 1. I like the game designers
 2. The cover (illustration)
 3. I like the original material and the genre
 4. Playing it was fun
 5. Other ()
- **Have you ever played an RPG?**
 1. Yes (about once a month)
 2. No
- **Do you subscribe to "Dragon Magazine"?**
 1. Every issue
 2. Sometimes
 3. No
- **Do you subscribe to "RPG Dragon"?**
 1. Every issue
 2. Sometimes
 3. No
- **What genre of RPGs do you like? (pick any)**
 1. Fantasy
 2. SF
 3. Horror
 - Legend
 4. Cyberpunk
 5. Sports
 6. Mystery
 7. School related
 8. Historical
 9. Other
- **Titles you want to see released as an RPG**

Please tell us (work name, genre, etc.).
- Please share your opinions and comments about this book.

Post Card

Postage required
50 yen stamp
Please paste here

1 0 2 -

Fujimi, Chiyoda-ku, Tokyo 12 - 14
Fujimi Shobo Editorial Department
 Attention: "Fujimi Dragon Book"

Address	〒		
Name		(Job • School)	Age
(Male/ female)		TEL	

We will draw a prize once a year from among those who returned this questionnaire, and we will give 100 people original small goods as a souvenir. We will return the gift with shipping. Return postage guaranteed.

Infinite possibilities... one rule



-
- ① MAGIUS Start Book
 - ② Goryutei RPG Goryutei's uproar!
 - ③ Monster Maker Gakuen RPG Festival Edition
 - ④ Slayers RPG "Naga-sama!"
 - ⑤ Tenchi Muyo! "Battle of Heaven and Earth"
 - ⑥ Rocket Girl RPG
 - ⑦ Renrai Gakuen RPG "Horai 83 station"
 - ⑧ Slayers RPG Dungeon Operation!
 - ⑨ Silent Mobius RPG
 - ⑩ Saber Marionette J-RPG Holy Alicia
 - ⑪ Tenchi Muyo! RPG "Needless Chaos!"
 - ⑫ Let's Go! Space Battleship Yamamoto "Get Ready, GO!"
 - ⑬ Evangelion Decisive Battle! Tokyo 3
 - ⑭ Tenchi Muyo! in LOVE RPG
 - ⑮ Slayers RPG Introduction! Lina's Magic Class
 - ⑯ MAGIUS. RPG Replays
 - ⑰ Naga-sama Slayers RPG Replay collection
 - ⑱ Slayers RPG The Holy City of Adobenchaa
 - ⑲ Magical Girl Pretty Sammy RPG
 - ⑳ MAZE Explosion space-time RPG
 - ㉑ Evangelion RPG II "Angel Approaches!"
-



Original Cover Art: Naigantani Kawakubo
Finish: ARTIAC

新装版
1/24
83-21
580



ISBN 4-8291-4335-5
C0176 4590E
9784829143353
Price: JPY 680 (subject to tax)



1920716003809

One rule, unlimited possibilities.



Magius Magazine Group
PUBLISHED BY CHANGELING PRESS

This is where you start an RPG game for the popular anime series Neon Genesis Evangelion. The plot and souls events first occur in the city of Tokyo 3 from the hustle and bustle of life spent with Misato, to dynamic battles against the Angels. Evangelion is full of charm. Experience piloting your own EVA!

To play the "Neon Genesis Evangelion RPG" you will need a "MAGIUS Start Book".

Infinite possibilities... one rule



Magius Magazine Group
PUBLISHED BY CHANGELING PRESS

Series

1. MAGIUS Start Book
2. Gorynen RPG: Gorynen in Japan!
3. Gorynen RPG: Gorynen in Europe!
4. Slayres RPG "Nagsamni" - "Special Edition"
5. Trenchi Muyo! "Battle of Heaven and Earth"
6. Renai Gakuen RPG "High! 83 station!"
7. Slayres RPG: Dungeon Operations!
8. Secret Mobius RPG: RPG Holy Atlas
9. Trenchi Muyo! RPG "Needless Chaos"
10. Let's our Space Fantasy! "Yamano! Our Space, Our!"
11. Evangelion Detective Battle! Tokyo 3
12. Slayres RPG: Introduction! Lina's Magic Class
13. Slayres RPG: Replays
14. Nagasama Slayres RPG! "Replay collection"
15. Slayres RPG: "Replay collection"
16. Magical Girl Pretty Sammy RPG
17. MAZE: Explosion space-line RPG
18. Evangelion RPG II "Angel Approaches!"

Heart pounding manga action
for the generation
DRAGON
Experience all the thrill of anime's best
Pride, Size and Super Heroes

One rule...
Infinite possibilities

MAGIUS
Magius Magazine Group
PUBLISHED BY CHANGELING PRESS

Identification pattern Blue
The signature of an Angel
An Angel's reaction suddenly
occurs during a switch's test. In
the chaos that follows, vital decisions
will you make? A never-before-told story,
based on the hit TV animation "Evangelion!"
Fujimori Dragon Book Price: 380 yen (tax excluded)

Reserved seats
for adventurers!
Full of RPG's and del!
Fujimori Shobun Management!

Monthly dragon magazine
DRAGON
MAGAZINE
Special World RPG Adventure
Cover: Laysa, World of Eldora
Illustration: Shirogane, Yui
MAGIUS and more

ドラゴン
QUARTERLY RPG DRAGON

Neon Genesis Evangelion RPG

格好の最新刊!

富士見ファンタジア文庫 ILLUSTRATED BY TOKUYUKI HIRAMA

富士見書房

全国洋画系にて8/2(土)ロードショー

スライヤーズ りげろ

18歳未満は観るな
18歳未満は観るな
18歳未満は観るな

ババ金財たかつた
ババ金財たかつた
ババ金財たかつた

セガサターン専用3Dミレニウムスライヤーズ
今度こそガリアン・ティンガカ
エンディングを体験せよ!!

7月下旬発売予定
7月下旬発売予定
7月下旬発売予定

おもしろき新発見! スレイヤーズを極めろ!!

VIDEO スレイヤーズRETURN 全8巻
CD-ROM スレイヤーズ 全8巻

前売券発売中!!

5月の新刊!

■富士見ファンタジア文庫

無罪証三編(1)

謀略トライアングル

吉岡 平

魔法少女プリティサミー

黒田洋介

混沌の大地Ⅱ

清松みゆき

魔法学園LUNAR!

杉谷 祐

必殺 お嬢しん3

妖精の奇蹟

小林めぐみ

黄金郷に手を出すな

新城十馬

MAGIUS

MAZE☆爆熱時空RPG

あかほりさとる・藍條たのあきら/F.E.A.R.著

MAGIUS

新世紀エヴァンゲリオンRPGⅡ

板垣澄吾

富士見ドラゴンブック

見田竜介

ドラゴンマガジンコレクションSP

魔法少女プリティサミー アニメコミック
セーバーオネットJ アニメコミック
セーバーオネットJ フィルムブック

角川書店の本

黒髪のキャプチュード⑥

見田竜介

角川書店